

BRIDAL & BANDS

JANUARY 2017

Modern Classics

*Timeless Styles. Unique Twists.
Flexible Options.*



S STULLER



123136 | 123176

Unique Yet Timeless

“The bridal industry is buzzing with the phrase ‘unique yet timeless’ because it sums up what bridal customers want. In this brochure, we’ve selected styles from the major trends that successfully strike this elusive balance. You’ll see updated classics and vintage-inspired designs, as well as options in metal colors, textures,



stone shapes, and colored stones. To meet the ever-growing demand for customization, we feature popular flexible 3C designs throughout. You can easily customize them on Stuller.com. Whatever bridal goals you’ve set for 2017, Stuller is here to help you meet and exceed them.”

MORGAN BARES Engagement Product Manager

ERIKA HAPPE Eternity, Anniversary, and Wedding Bands Product Manager

Every Setting Needs a Diamond



Why Stuller Diamonds?

We have the largest on-hand diamond inventory at competitive prices. Our breadth includes an exceptional range of sizes, shapes, and colors.

Make Your Life Simpler

With one call to 800-877-7777 ext.540, you find what you need and it arrives at your store the next day.

Red Box Diamonds®

Our diamond inventory includes individually graded diamonds with rebates for you and excellent customer benefits. These include complimentary insurance giving customers a new level of security.

Learn more about these benefits at Stuller.com/RedBox.

On the cover, we tip our hats to colored stones. We set the engagement ring (123129) with a fancy vivid yellow oval diamond (1CT, VVS2; Serial #227740) from our Red Box Diamonds® inventory. For pricing and additional information on this one-of-a-kind ring, please call 800-877-7777, ext. 540.

New and Noteworthy

What happens when you combine on-trend elements with classic style? You create an irresistible modern look to love and wear for a lifetime.



- A. **123214** Round-Shape Bezel Set Diamond Wedding Band, 1/10 CT center (3mm), 14K White/14K Yellow, 32, size 11, **\$2,129**. Mounting 123214, **\$1,839**.
- B. **123151** Round-Shape Semi-Set Engagement Ring, 1 1/2 CT center (7.4mm), 3/4 CTW, 14K White, 32, size 7, **\$3,315**. Mounting 123151, **\$985**.
- C. **123191** Round-Shape Diamond Eternity Band, 3/10 CTW, 14K Rose, 32, size 7, **\$2,335**. Mounting 123191, **\$289**.



A

Available center stone shapes:




B

Available center stone shapes:




C

A. **123212** Round-Shape Semi-Set Engagement Ring, 1 CT center (6.5mm), 0.05 CTW, 14K White, 32, size 7, **\$679**. Mounting 123212, **\$495**. **51654** Matching Band, 14K White, size 7, **\$319**


B. **123082** Cushion-Shape Semi-Set Engagement Ring, 1 1/4 CT center (6x6mm), 1/10 CTW, 14K White/14K Rose, 32, size 7, **1,015**. Mounting 123082, **\$579**. **123147** Matching Diamond Band, 1/4 CTW, 14K White, 32, size 7, **\$1,139**. Mounting 123147, **\$359**.

C. **123241** Round-Shape Semi-Set Engagement Ring, 1 CT center (6.5mm), .08 CTW, 14K Yellow, 32, size 7, **\$815**. Mounting 123241, **\$595**. **123241** Matching Diamond Band, .08 CTW, 14K Yellow, 32, size 7, **\$725**. Mounting 123241, **\$379**.



3C

D

Available center stone shapes:




E



F

D. **123253** Round-Shape Semi-Set Engagement Ring, 1 CT center (6.5mm), 1/6 CTW, 14K White, 32, size 7, **\$889**. Mounting 123253, **\$469**. **123254** Matching Diamond Band, 1/6 CTW, 14K White, 32, size 7, **\$905**. Mounting 123254, **\$419**.

E. **123183** Round-Shape Semi-Set Engagement Ring, 1 CT center (6.5mm), 0.05 CTW, 14K Rose, 32, size 7, **\$755**. Mounting 123183, **\$545**. **122680** Matching Diamond Band, 1/6 CTW, 14K Rose, 32, size 7, **\$1,099**. Mounting 122680, **\$385**.

F. **123237** Round-Shape Semi-Set Engagement Ring, 1 CT center (6.5mm), 1/6 CTW, 14K White, 32, size 7, **\$1,295**. Mounting 123237, **\$689**. **123237** Matching Diamond Band, 0.08 CTW, 14K White, 32, size 7, **\$839**. Mounting 123237, **\$455**.



G

Available center stone shapes:




H

Available center stone shapes:




J

G. **123198** Oval-Shape Semi-Set Engagement Ring, 3/4 CT center (7x5mm), 9/10 CTW, 14K White, 32, size 7, **\$955**. Mounting 123198, **\$359**. **122814** Matching Diamond Band, 1/4 CTW, 14K White, 32, size 7, **\$1,085**. Mounting 122814, **\$365**.

H. **123023** Oval-Shape Semi-Set Engagement Ring, 3/4 CT center (7x5mm), 1/6 CTW, 14K White, 32, size 7, **\$1,329**. Mounting 123023, **\$715**. **123024** Matching Diamond Band, 1/10 CTW, 14K White, 32, size 7, **\$805**. Mounting 123024, **\$385**.

J. **123261** Round-Shape Semi-Set Engagement Ring, 1 CT center (6.5mm), 1/4 CTW, 14K White, 32, size 7, **\$1,525**. Mounting 123261, **\$635**. **123261** Matching Diamond Band, 1/10 CTW, 14K White, 32, size 7, **\$745**. Mounting 123261, **\$309**.



K

Available center stone shapes:




L

Available center stone shapes:



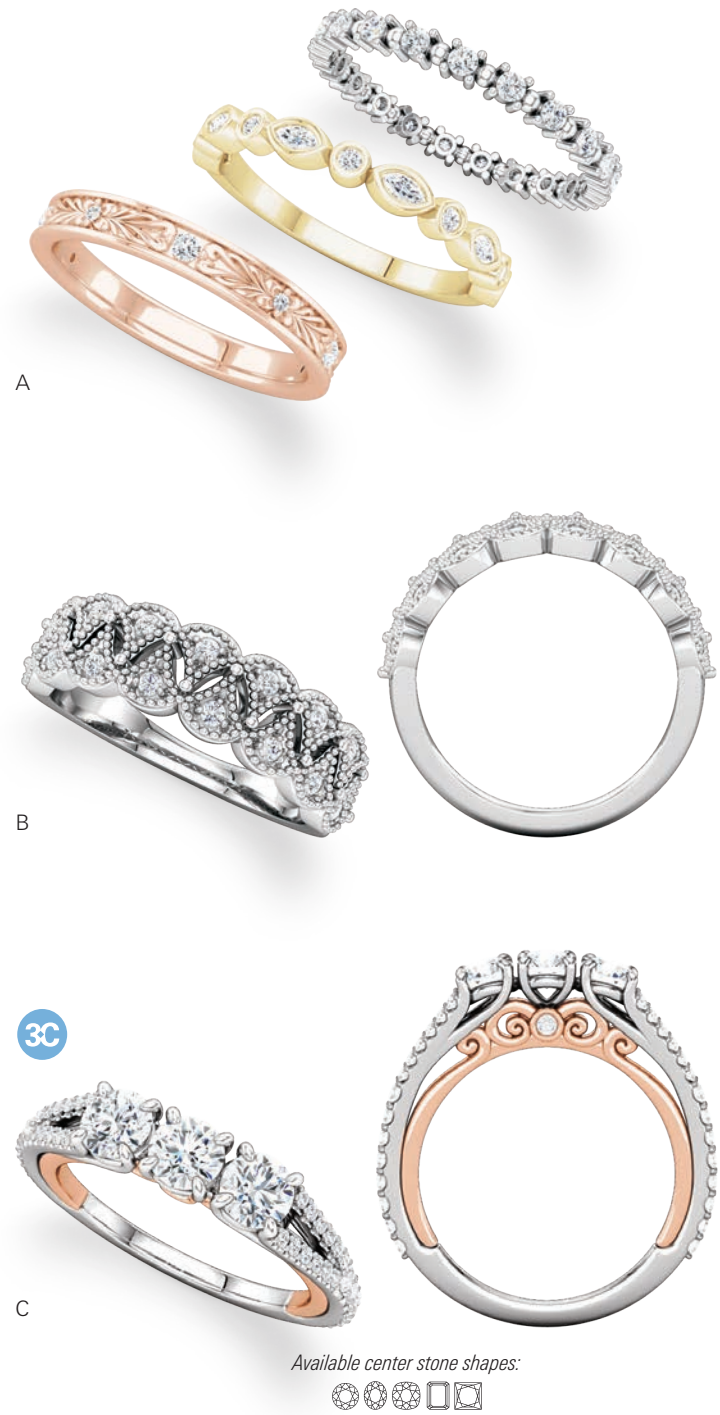

M

K. **123066** Emerald-Shape Semi-Set Engagement Ring, 1 1/4 CT center (7x5mm), 1/3 CTW, 14K Yellow, 32, size 7, **\$1,515**. Mounting 123066, **\$429**. **122145** Matching Diamond Band, 1/4 CTW, 14K Yellow, 32, size 7, **\$995**. Mounting 122145, **\$329**.

L. **122892** Round-Shape Semi-Set Engagement Ring, 1 CT center (6.5mm), 3/8 CTW, 14K White, 32, size 7, **\$2,355**. Mounting 122892, **\$759**. **122893** Matching Diamond Band, 1/6 CTW, 14K White, 32, size 7, **\$1,009**. Mounting 122893, **\$339**.

M. **123249** Round-Shape Semi-Set Engagement Ring, 1 CT center (6.5mm), 1/3 CTW, 14K White, 32, size 7, **\$1,749**. Mounting 123249, **\$685**. **123249** Matching Diamond Band, 1/6 CTW, 14K White, 32, size 7, **\$795**. Mounting 123249, **\$349**.

Stone Codes: 21 Genuine Straight Baguette Diamond SI2-SI3, G-I, Natural
 32 Genuine Diamond SI2-SI3, G-I, Natural | 35 Genuine Diamond (Square Princess) SI2-SI3, G-H, Natural

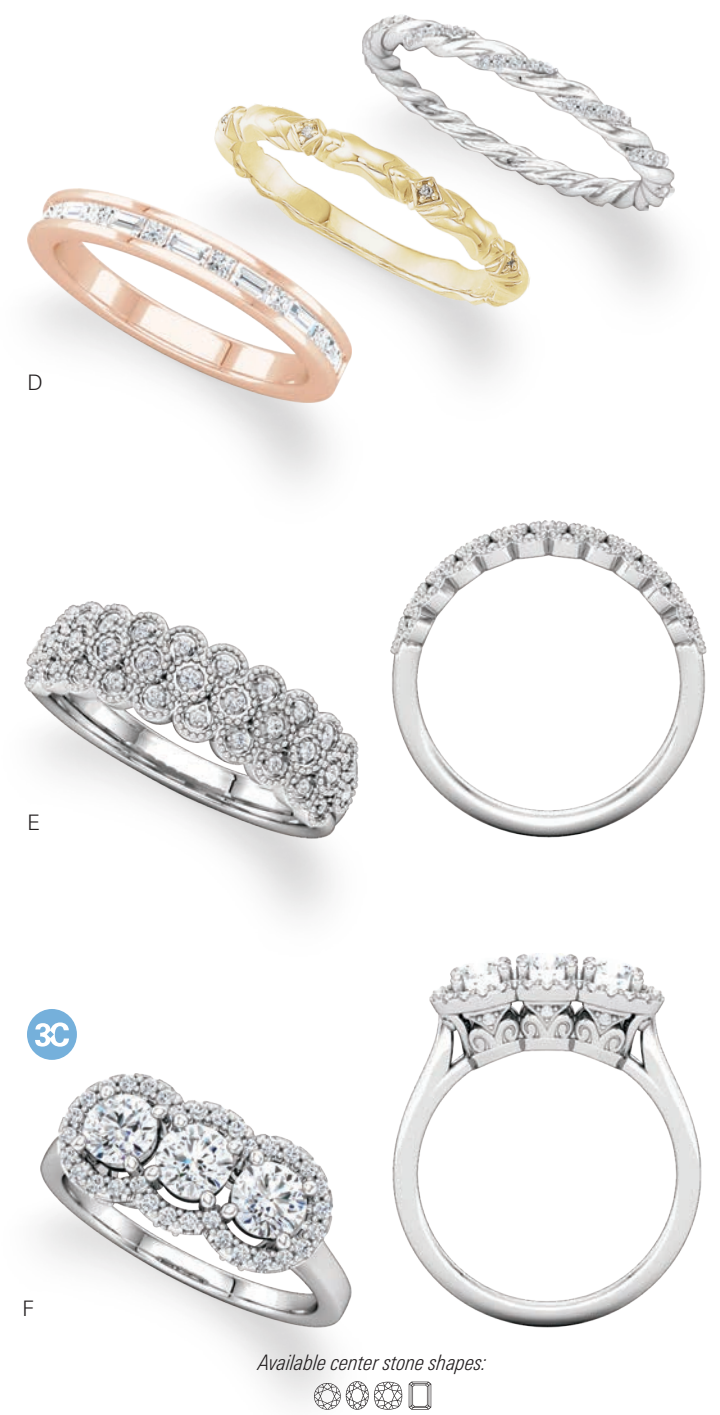


A. **123203** Round-Shape Diamond Eternity Band, $\frac{3}{8}$ CTW, 14K White, 32, size 7, **\$1,345**. Mounting 123203, **\$239**.
123175 Multi-Shape Diamond Anniversary Band, $\frac{1}{4}$ CTW, 14K Yellow, 32, size 7, **\$1,089**. Mounting 123175, **\$395**.
123255 Diamond Anniversary Band, 0.08 CTW, 14K Rose, 32, size 7, **\$709**. Mounting 123255, **\$515**.

B. **123250** Diamond Anniversary Band, $\frac{1}{6}$ CTW, 14K White, 32, size 7, **\$1,279**. Mounting 123250, **\$905**.

C. **123215** Round-Shape Semi-Set Anniversary Band, $\frac{3}{4}$ CT centers (3- 4.1mm), 1 CTW, 14K White/14K Rose, 32, size 7, **\$1,789**. Mounting 123215, **\$639**.

Available center stone shapes:

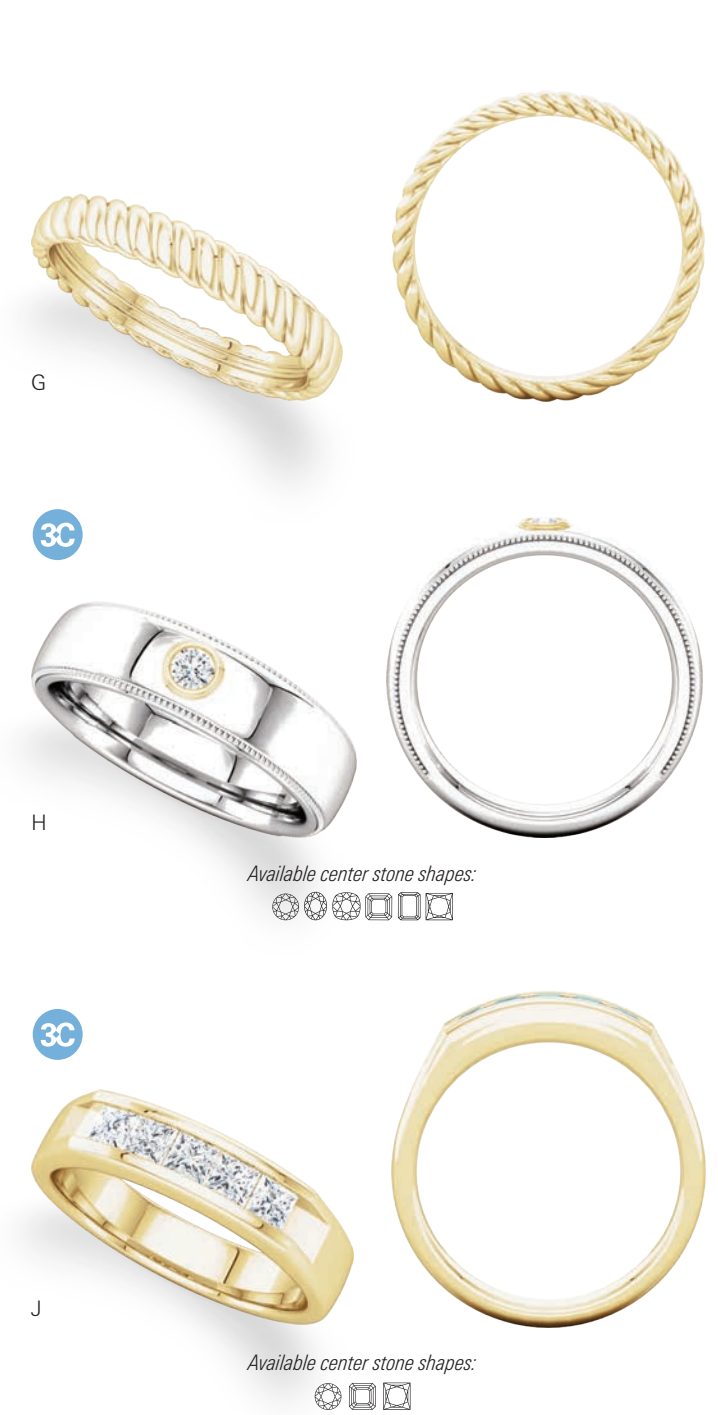


D. **123211** Rope-Style Diamond Eternity Band, $\frac{1}{6}$ CTW, 14K White, 32, size 7, **\$1,095**. Mounting 123211, **\$349**.
123187 Diamond Anniversary Band, 0.02 CTW, 14K Yellow, 32, size 7, **\$435**. Mounting 123187, **\$349**.
123255 Diamond Anniversary Band, 0.08 CTW, 14K Rose, 21, 32, size 7, **\$709**. Mounting 123255, **\$515**.

E. **123251** Diamond Anniversary Band, $\frac{1}{10}$ CTW, 14K White, 32, size 7, **\$1,129**. Mounting 123251, **\$709**.

F. **123245** Round-Shape Semi-Set Anniversary Band, $\frac{3}{4}$ CT centers (3- 4.1mm), $\frac{5}{8}$ CTW, 14K White, 32, size 7, **\$3,615**. Mounting 123245, **\$635**.

Available center stone shapes:



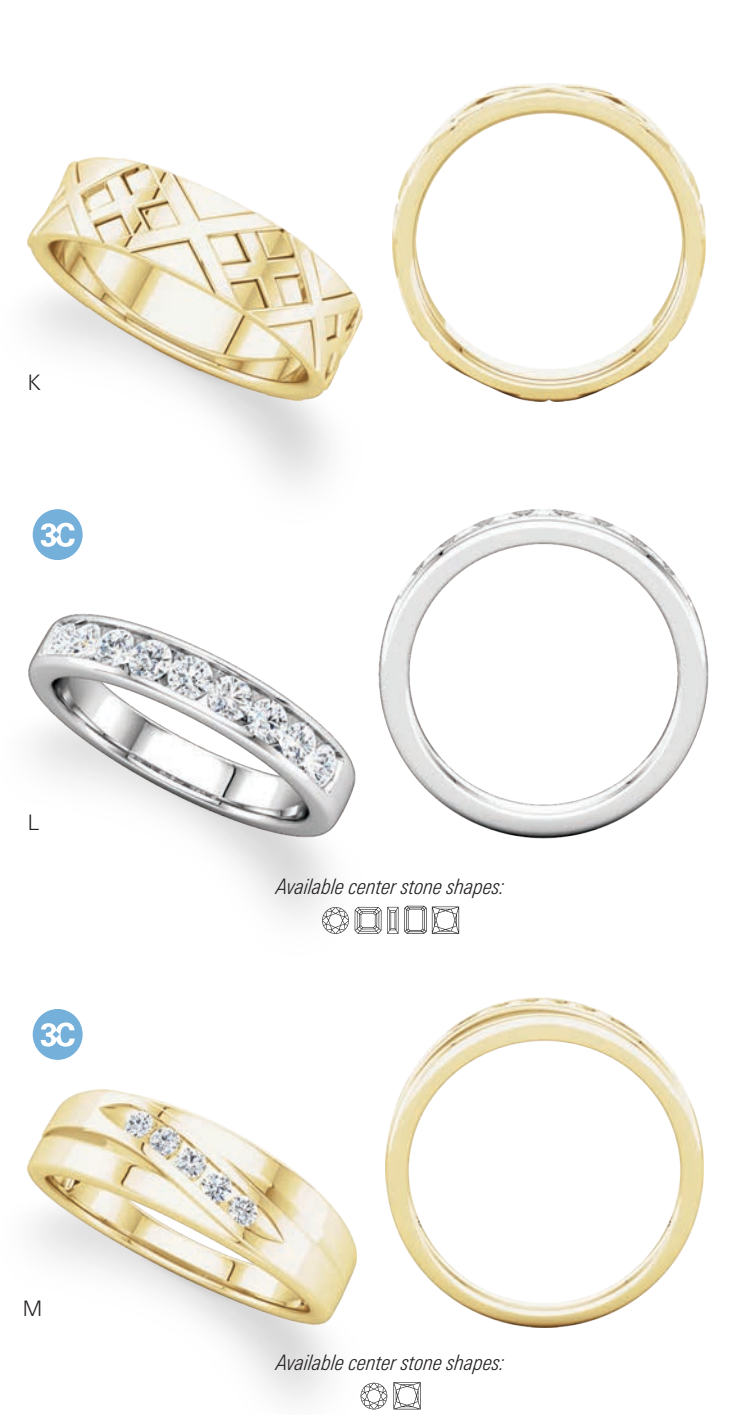
G. **51696** Thick Rope Band, 3.75mm top width, 14K Yellow, size 11, **\$595**

H. **123214** Round-Shape Bezel Set Diamond Wedding Band, $\frac{1}{10}$ CT center (3mm), 14K White/14K Yellow, 32, size 11, **\$2,129**. Mounting 123214, **\$1,839**.

J. **122785** Square-Shape Channel-Set Wedding Band, $\frac{3}{4}$ CTW, 14K Yellow, 35, size 11, **\$3,639**. Mounting 122785, **\$1,415**.

Available center stone shapes:

Available center stone shapes:



K. **51716** Patterned Wedding Band, 6mm top width, 14K Yellow, size 11, **\$1,309**

L. **123133** Round-Shape Channel-Set Wedding Band, $\frac{9}{10}$ CTW, 14K White, 32, size 11, **\$3,459**. Mounting 123133, **\$1,099**.

M. **122789** Round-Shape Channel-Set Wedding Band, $\frac{1}{6}$ CTW, 14K Yellow, 32, size 11, **\$1,415**. Mounting 122789, **\$1,045**.

Available center stone shapes:

Available center stone shapes:

Vintage Elegance

Capture the romance and sophistication of vintage elegance with delicate, distinctive details — milgrain, hand engraving, beading, and scrollwork.



A. **5721** Comfort-Fit Double Milgrain Band, 14K White/14K Yellow, 32, size 7, **\$945**; size 11, **\$1,085**

B. **123134** Round-Shape Semi-Set Engagement Ring, 1 ½ CT center (7.4mm), ¼ CTW, 14K Rose, 32, size 7, **\$899**. Mounting 123134, **\$529**.

C. **122534** Round-Shape Eternity Band, ⅓ CTW, 14K White, 32, size 7, **\$1,279**. Mounting 122534, **\$499**.

D. **123070** Diamond Anniversary Band, 0.07 CTW, 14K Rose, 32, size 7, **\$689**. Mounting 123070, **\$475**.

E. **123081** Round-Shape Semi-Set Engagement Ring, 1 ½ CT center (7.4mm), ½ CTW, 14K White/14K Rose, 32, size 7, **\$1,785**. Mounting 123081, **\$625**.

F. **123044** Emerald-Shape Solitaire Engagement Ring Mounting, 1 ¾ CT center (8x6mm), 14K Yellow, 32, size 7, **\$625**



A

Available center stone shapes:



B

Available center stone shapes:



C

A. **123021** Round-Shape Semi-Set Engagement Ring, 1 CT center (6.5mm), 1/6 CTW, 14K Rose, 32, size 7, **\$1,339**. Mounting 123021, **\$499**. **123224** Matching Diamond Band, 1/6 CTW, 14K Rose, 32, size 7, **\$1,285**. Mounting 123224, **\$429**.

B. **123043** Oval-Shape Solitaire Engagement Ring Mounting, 3/4 CT center (7x5mm), 14K Yellow, 32, size 7, **\$559**. **51652** Matching Band, 14K Yellow, size 7, **\$489**

C. **123047** Round-Shape Solitaire Engagement Ring Mounting, 1 CT center (6.5mm), 14K White, 32, size 7, **\$659**. **123061** Matching Band, 14K White, 32, size 7, **\$509**



D



E

Available center stone shapes:



F

D. **69805** Round-Shape Semi-Set Engagement Ring, 1 CT center (6.5mm), .03 CTW, 14K White, 109, size 6, **\$1,559**. Mounting 69805, **\$1,555**.

E. **123063** Oval-Shape Solitaire Engagement Ring Mounting, 3/4 CT center (7x5mm), 14K Rose, 32, size 7, **\$595**. **51710** Matching Band, 14K Rose, size 7, **\$575**

F. **123050** Round-Shape Solitaire Engagement Ring Mounting, 1 CT center (6.5mm), 14K White, 32, size 7, **\$469**. **123050** Matching Band, 14K White, size 7, **\$359**



G

Available center stone shapes:



H

Available center stone shapes:



J

G. **121981** Round-Shape Semi-Set Engagement Ring, 1 CT center (6.5mm), 1/10 CTW, Yellow, 32, size 7, **\$1,015**. Mounting 121981, **\$659**. **51247** Sculptural-Style Fancy Band, 14K Yellow, size 7, **\$399**

H. **122864** Oval-Shape Semi-Set Engagement Ring, 3/4 CT center (7x5mm), 1/4 CTW, 14K White, 32, size 7, **\$1,705**. Mounting 122864, **\$845**. **122865** Matching Diamond Band, 1/6 CTW, 14K White, 32, size 7, **\$1,145**. Mounting 122865, **\$565**.

J. **651863** Round-Shape Semi-Set Engagement Ring, 1 CT center (6.5mm), 1/6 CTW, 14K White, 109, size 6, **\$1,995**. **651863** Matching Diamond Band, 1/6 CTW, 14K White, 32, size 6, **\$1,489**



K

Available center stone shapes:



L



M

Available center stone shapes:

K. **123038** Oval-Shape Semi-Set Engagement Ring, 3/4 CT center (7x5mm), 1/6 CTW, 14K White, 32, size 7, **\$1,525**. Mounting 123038, **\$845**. **123040** Matching Diamond Band, 1/4 CTW, 14K White, 32, size 7, **\$1,639**. Mounting 123040, **\$649**.

L. **123236** Round-Shape Semi-Set Engagement Ring, 1 CT center (6.5mm), 1/6 CTW, 14K Rose, 32, size 7, **\$1,195**. Mounting 123236, **\$589**. **123236** Matching Diamond Band, 14K Rose, 32, size 7, **\$345**

M. **69803** Round-Shape Semi-Set Engagement Ring, 1 CT center (6.5mm), 1/6 CTW, 14K White, 109, size 6, **\$2,285**. **69803** Matching Band, 14K White, size 6, **\$1,185**

NEW



A



D



G



K



N



R

NEW



B



E



H



L



P



S



C



F



J



M



Q



T

Available center stone shapes:



A. **123283** Diamond Anniversary Band, .04 CTW, 14K Rose, 32, size 7, **\$569**. Mounting 123283, **\$489**.

D. **123086** Diamond Anniversary Band, .06 CTW, 14K Yellow, 32, size 7, **\$695**. Mounting 123086, **\$465**.

G. **123093** Diamond Anniversary Band, 1/8 CTW, 14K White, 32, size 7, **\$1,155**. Mounting 123093, **\$405**.

K. **51582** Wheat Pattern Band, 3mm top width, 14K Rose, size 7, **\$609**.

N. **50093** Engraved Design Band with Milgrain, 3mm top width, 14K Yellow, size 7, **\$1,195**; size 11, **\$1,445**.

R. **51581** Sculptural-Style Fancy Band, 4mm top width, 14K White, size 7, **\$719**.

B. **123263** Diamond Anniversary Band, 1/8 CTW, 14K Yellow, 32, size 7, **\$895**. Mounting 123263, **\$515**.

E. **652292** Diamond Anniversary Band, 1/8 CTW, 14K White, 32, size 7, **\$899**.

H. **69817** Diamond Anniversary Band, 1/8 CTW, 14K Rose, 32, size 7, **\$1,285**.

L. **50539** Scroll Design Band, 4.5mm top width, 14K White, size 7, **\$579**.

P. **51579** Sculptural-Style Band, 5mm top width, 14K Rose, size 7, **\$535**.

S. **50374** Engraved Design Band, 8mm top width, 14K White/14K Yellow, size 7, **\$2,429**; size 11; **\$3,035**.

C. **69816** Diamond Eternity Band, 1/4 CTW, 14K White, 32, size 7, **\$2,039**.

F. **123102** Diamond Eternity Band, 1/4 CTW, 14K Rose, 32, size 7, **\$1,359**. Mounting 123102, **\$475**.

J. **122534** Round-Shape Eternity Band Mounting, 1/4 CTW, 14K Yellow, 32, size 7, **\$1,165**. Mounting 122534, **\$465**.

M. **50061** Engraved Design Band with Milgrain, 6mm top width, 14K Yellow, size 7, **\$2,505**; size 11, **\$2,965**.

Q. **51577** Sculptural-Style Band with Relief Pattern, 6mm top width, 14K White, size 7, **\$1,249**; size 11, **\$1,595**.

T. **51578** Wheat Pattern Band, 5mm top width, 14K Rose, size 7, **\$1,439**; size 11, **\$1,565**.

Updated Bestsellers

Building on their proven performance, here are some creative twists on a few of our most popular bridal styles.



- A. **FE11** Flat-Edge Band, 6mm top width, 14K Yellow, size 7, \$609; size 11, **\$699**
- B. **123082** Oval-Shape Semi-Set Engagement Ring, 1 CT center (8x6mm), 1/8 CTW, 14K White/14K Rose, 32, size 7, **\$1,079**. Mounting 123082, \$599.
- C. **122933** Two-Stone Semi-Set Ring, 1/2 CT centers (5.2mm), 1/8 CTW, 14K White, 32, size 7, **\$1,129**. Mounting 122933, \$605.
- D. **122107** Round-Shape Eternity Band, 7/8 CTW, 14K Rose, 32, size 7, **\$2,279**. Mounting 122107, \$305.

UPDATED BESTSELLERS



E

Available center stone shapes:



H

Available center stone shapes:



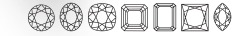
F

Available center stone shapes:



J

Available center stone shapes:



G



K

- E. **123174** Round-Shape Semi-Set Engagement Ring, 1 CT center (6.5mm), 1/4 CTW, 14K White, 32, size 7, **\$1,649**. Mounting 123174, \$555.
123194 Matching Diamond Band, 1/8 CTW, 14K White, 32, size 7, **\$825**. Mounting 123194, \$379.
- F. **122908** Oval-Shape Semi-Set Engagement Ring, 3/4 CT center (7x5mm), 3/8 CTW, 14K White/14K Yellow, 32, size 7, **\$1,789**. Mounting 122908, \$555.
51623 Matching Diamond Band, 1/8 CTW, 14K White, 32, size 7, **\$1,045**. Mounting 51623, \$435.
- G. **123164** Round-Shape Three-Stone Semi-Set Engagement Ring, 3/4 CT center (5.8mm), 1/2 CTW, 14K Yellow, 32, size 7, **\$2,415**. Mounting 123164, \$585.
51654 Matching Band, 14K Yellow, size 7, **\$325**

- H. **122842** Round-Shape Semi-Set Engagement Ring, 1 CT center (6.5mm), 1/8 CTW, 14K Rose, 32, size 7, **\$1,535**. Mounting 122842, \$499.
122843 Matching Diamond Band, 1/8 CTW, 14K Rose, 32, size 7, **\$935**. Mounting 122843, \$345.
- J. **122804** Oval-Shape Semi-Set Engagement Ring, 3/4 CT center (7x5mm), 3/4 CTW, 14K White, 32, size 7, **\$2,639**. Mounting 122804, \$655.
122805 Matching Diamond Band, 1/2 CTW, 14K White, 32, size 7, **\$1,969**. Mounting 122805, \$515.
- K. **123163** Round-Shape Three-Stone Semi-Set Engagement Ring, 3/4 CT center (5.8mm), 3/8 CTW, 14K White, 32, size 7, **\$2,049**. Mounting 123163, \$525.
123163 Matching Band, 14K White, size 7, **\$329**

Stone Codes: 21 Genuine Straight Baguette Diamond SI2-SI3, G-I, Natural
32 Genuine Diamond SI2-SI3, G-I, Natural | 35 Genuine Diamond (Square Princess) SI2-SI3, G-H, Natural



Available center stone shapes:



Available center stone shapes:



Available center stone shapes:

A. **123213** Round-Shape Solitaire Engagement Ring Mounting, 1 CT center (6.5mm), 14K White, 32, size 7, **\$539**
51725 Matching Band, 14K White, size 7, **\$469**

B. **123018** Round-Shape Solitaire Engagement Ring Mounting, 1 CT center (6.5mm), 14K White, 32, size 7, **\$595**
51645 Matching Band, 14K White, size 7, **\$499**

C. **122993** Round-Shape Semi-Set Engagement Ring, 1 CT center (6.5mm), 1/5 CTW, 14K White, 32, size 7, **\$1,079**. Mounting 122993, **\$409**.
122994 Matching Diamond Band, 1/5 CTW, 14K White, 32, size 7, **\$1,029**. Mounting 122994, **\$345**.



Available center stone shapes:



D. **123156** Round-Shape Semi-Set Engagement Ring, 1 CT center (6.5mm), 0.08 CTW, 14K White, 32, size 7, **\$965**. Mounting 123156, **\$579**.
51654 Matching Band, 14K White, size 7, **\$319**

E. **123083** Round-Shape Semi-Set Engagement Ring, 1 CT center (6.5mm), 0.03 CTW, 14K White/14K Rose, 32, size 7, **\$609**. Mounting 123083, **\$509**.
51680 Matching Band, 14K White, size 7, **\$419**

F. **122996** Round-Shape Semi-Set Engagement Ring, 1 CT center (6.5mm), 1/3 CTW, 14K White, 32, size 7, **\$1,495**. Mounting 122996, **\$345**.
123041 Matching Diamond Band, 1/3 CTW, 14K White, 32, size 7, **\$1,375**. Mounting 123041, **\$299**.



Available center stone shapes:



Available center stone shapes:



G. **122790** Round-Shape Semi-Set Engagement Ring, 1 CT center (6.5mm), 1/5 CTW, 14K White, 32, size 7, **\$1,065**. Mounting 122790, **\$425**.
122814 Matching Diamond Band, 1/4 CTW, 14K White, 32, size 7, **\$1,085**. Mounting 122814, **\$365**.

H. **122870** Cushion-Shape Semi-Set Engagement Ring, 1 1/4 CT center (6x6mm), 3/8 CTW, 14K Rose, 32, size 7, **\$1,739**. Mounting 122870, **\$449**.
122871 Matching Diamond Band, 1/4 CTW, 14K Rose, 32, size 7, **\$1,125**. Mounting 122871, **\$315**.

J. **122931** Two-Stone Semi-Set Ring, 1/3 CT centers (4.4mm), 1/5 CTW, 14K White, 32, size 7, **\$1,205**. Mounting 122931, **\$545**.
122931 Matching Diamond Band, 1/5 CTW, 14K White, 32, size 7, **\$1,009**. Mounting 122931, **\$379**.



Available center stone shapes:



Available center stone shapes:



K. **122000** Round-Shape Three-Stone Semi-Set Engagement Ring, 1 CT center (6.5mm), 1/2 CTW, 14K White, 32, size 7, **\$1,949**. Mounting 122000, **\$539**.
122154 Matching Diamond Band, 1/4 CTW, 14K White, 32, size 7, **\$1,095**. Mounting 122154, **\$425**.

L. **122888** Cushion-Shape Semi-Set Engagement Ring, 1 1/4 CT center (6x6mm), 1/3 CTW, 14K White, 32, size 7, **\$1,815**. Mounting 122888, **\$639**.
122890 Matching Diamond Band, 1/5 CTW, 14K White, 32, size 7, **\$1,129**. Mounting 122890, **\$459**.

M. **122928** Two-Stone Ring Mounting, 1/3 CTW (2- 4.4mm), 14K White, 32, size 7, **\$545**
122928 Matching Band, 14K White, size 7, **\$375**



A



B



C

A. **123196** Diamond Ring Guard, 1/4 CTW, 14K White, 32, size 7, **\$1,259**. Mounting 123196, **\$649**

B. **122761** Ring Guard, 14K White, size 7, **\$715**

C. **122737** Diamond Contour Band, 0.04 CTW, 32, size 7, 14K White, **\$635**; 14K Yellow, **\$659**; 14K Rose, **\$645**. Mounting 122737, **\$349**.



D



E



F

D. **123195** Diamond Ring Guard, 5/8 CTW, 14K White, 32, size 7, **\$2,449**. Mounting 123195, **\$625**.

E. **122772** Ring Guard, 14K White, size 7, **\$655**

F. **123091** Diamond Contour Band, 1/4 CTW, 32, size 7, 14K White, **\$1,099**; 14K Yellow, **\$1,109**; 14K Rose, **\$1,115**. Mounting 123091, **\$415**.



G



H



J

Available center stone shapes:


Available center stone shapes:


G. **123165** Round-Shape Three-Stone Diamond Anniversary Band, 1/2 CT center (5.2mm), 1 CTW, 14K Yellow, 32, size 7, **\$6,589**. Mounting 123165, **\$449**.

H. **123079** Oval-Shape Three-Stone Diamond Anniversary Band, 3/4 CTW (3- 5x3mm), 14K White, 32, size 7, **\$3,635**. Mounting 123079, **\$409**.

J. **122861** Round-Shape Three-Stone Diamond Anniversary Band, 3/4 CTW (3- 4.1mm), 14K Rose, 32, size 7, **\$3,925**. Mounting 122861, **\$595**.



K



L



M

Available center stone shapes:


Available center stone shapes:


K. **123166** Round-Shape Five-Stone Diamond Anniversary Band, 1 1/8 CTW (5- 3.8mm), 14K Yellow, 32, size 7, **\$4,035**. Mounting 123166, **\$445**.

L. **123080** Oval-Shape Five-Stone Diamond Anniversary Band, 1 1/4 CTW (5- 5x3mm), 14K White, 32, size 7, **\$5,785**. Mounting 123080, **\$419**.

M. **122862** Round-Shape Five-Stone Anniversary Band Mounting, 1 1/8 CTW (5- 3.75mm), 14K Rose, 32, size 7, **\$4,405**. Mounting 122862, **\$625**.



IR Comfort-Fit Band,
14K Yellow

Top Width (mm)	2	4	5	6
Finger Size 7	\$315	\$705	\$855	\$1,025
Finger Size 11	\$349	\$815	\$985	\$1,169



51536 Flat Comfort-Fit Band with Milgrain,
14K White

Top Width (mm)	2	4	5	6
Finger Size 7	\$495	\$789	\$939	\$1,229
Finger Size 11	\$565	\$859	\$1,179	\$1,409

Band Personalization

Encourage your customers to create wedding bands to suit their tastes. Choices include these engraving fonts, special finishes, and laser patterns.

Visit Stuller.com/BandCustomization.

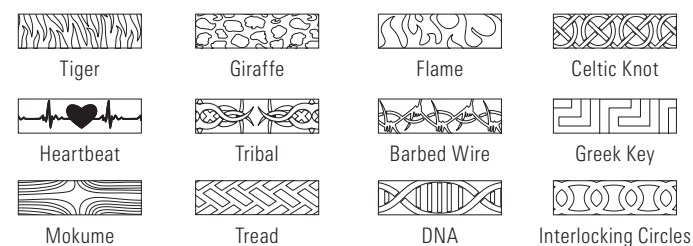
SPECIAL FINISHES



ENGRAVING FONT STYLES

Bookman	<i>Script MS Bold</i>
Colonna MT	Typewriter
<i>Lucida Handwriting</i>	<i>Corinthia</i>
<i>Edwardian Script</i>	Your own handwritten message
Old English	

LASER PATTERNS



A



B



C



D



E



F

A. **TAR105** Satin and Polished Beveled Band, 6mm top width, Tungsten, size 7, **\$329**; size 11, **\$329**

B. **TAR023** Polished Domed Band, 6mm top width, White Tungsten, size 7, **\$329**, size 11, **\$329**

C. **T805** Polished Domed Band, 6mm top width, Black Titanium, size 7, **\$159**; size 11, **\$159**

D. **TAR008** Satin and Polished Beveled Band, 8mm top width, Tungsten, size 7, **\$329**; size 11, **\$329**

E. **TAR204** Satin and Polished Ridged Band, 6mm top width, White Tungsten, size 7, **\$329**; size 11, **\$329**

F. **COR251** Casted Band with Rosewood Inlay, 8mm top width, Cobalt, size 11, **\$429**



Need More Options?

Explore Stuller's comprehensive bridal selection on **Stuller.com** or in our Bridal and Mountings catalogs.

Request one today by calling **800-877-7777**.



ever & ever®
CREATE YOUR FOREVER

View To Be Inspired

Ever&Ever makes your bridal business more vibrant, exciting, and successful.

This Comprehensive Program Includes —

- In-Case Prototypes
- Customizable Bridal Styles
- Consumer Branding and Marketing Materials
- Free Interactive Consumer-Facing Website
- Sales Support and Customer Service
- Quick Delivery on Live Bridal Styles

Learn more at Stuller.com/EverandEver.



Build Your Brand

TWO WAYS TO HELP PROMOTE YOUR STORE WITH PACKAGING



FOIL STAMPING

The hot foil stamping uses heated metal stamps or dies to forcefully impress your name or logo onto your packaging choice. The 3D metallic mark stands out, inviting the hand to brush and feel.



DIGITAL IMPRINTING

For an attractive, economical ink solution, we offer 4-color digital printing. Cured and polymerized with UV light, digitally printed insignia resist flaking and fading.

Visit Stuller.com/CustomImprinting for a complete listing of all we can offer you.



MCKENZIE
123134

S STULLER

Stuller.com | 800 877 7777

Below, left to right: **5977** Comfort-Fit Beveled Edge Band, 6mm top width, 14K White, size 7, **\$969**; size 11, **\$1,129**
123198 Oval-Shape Semi-Set Engagement Ring, 1 CT center (8x6mm), 1/2 CTW, 14K White, 32, size 7, **\$979**. Mounting 123198, **\$389**.
51695 Skinny Rope Band, 1.5mm top width, 14K Yellow, size 7, **\$195**

Front cover, top to bottom: **123129** Oval-Shape Semi-Set Engagement Ring, 3/4 CT center (7x5mm), 1/2 CTW, 14K White/14K Yellow, 32, size 7, **\$1,789**. Mounting 123129, **\$479**.
123041 Diamond Anniversary Band, 1/2 CTW, 14K Yellow, 32, size 7, **\$1,279**. Mounting 123041, **\$275**.

*Suggested retail prices at triple key based on \$1,000 platinum and \$1,250 gold. | Items shown larger than actual size.
For current pricing and availability and to see the entire collections, visit Stuller.com.*

01/2017 MKTG MEDIA:9807

