

A GUIDE TO PLATINUM

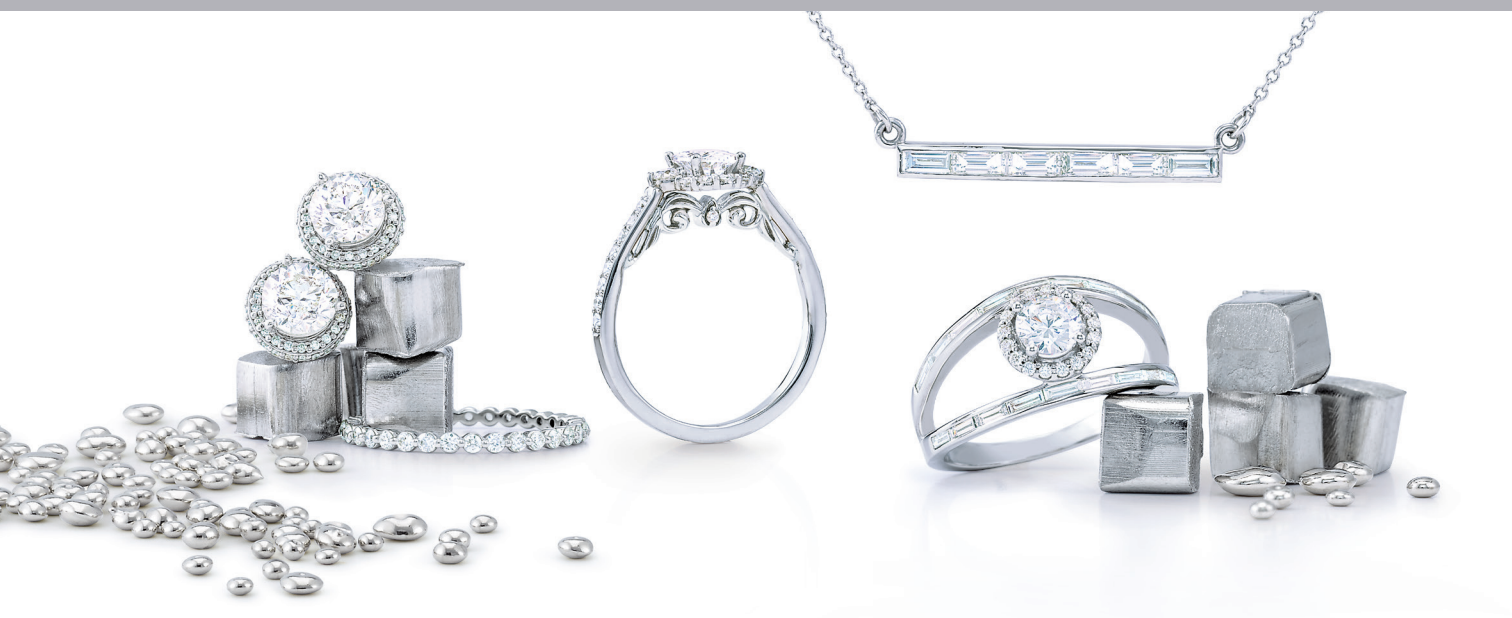
2017

Bridal and Fashion Jewelry

*Platinum classics encounter
trending looks in this gorgeous
gallery of designs.*



 STULLER



how to sell platinum to your customers

COLOR AND PURITY

Platinum is naturally white – it comes out of the ground white. No plating is necessary. Platinum doesn't change colors – it develops a patina with wear, which can be buffed back to its original shine if desired.

CARE AND MAINTENANCE

Platinum requires the least amount of lifetime maintenance due to its durability and purity. A slightly higher initial investment (at purchase) is far overcome by less required maintenance over time. Clean platinum at home with jewelry cleaning solution. Bring to a jeweler yearly for polishing and to check stones.

HEIRLOOM

Platinum retains its weight even after polishing. It will weigh the same after 50 years as it does today, making it heirloom quality.

INVESTMENT

Platinum's great strength provides maximum security for a diamond. Whatever the shank quality, choose a platinum head.

WEAR

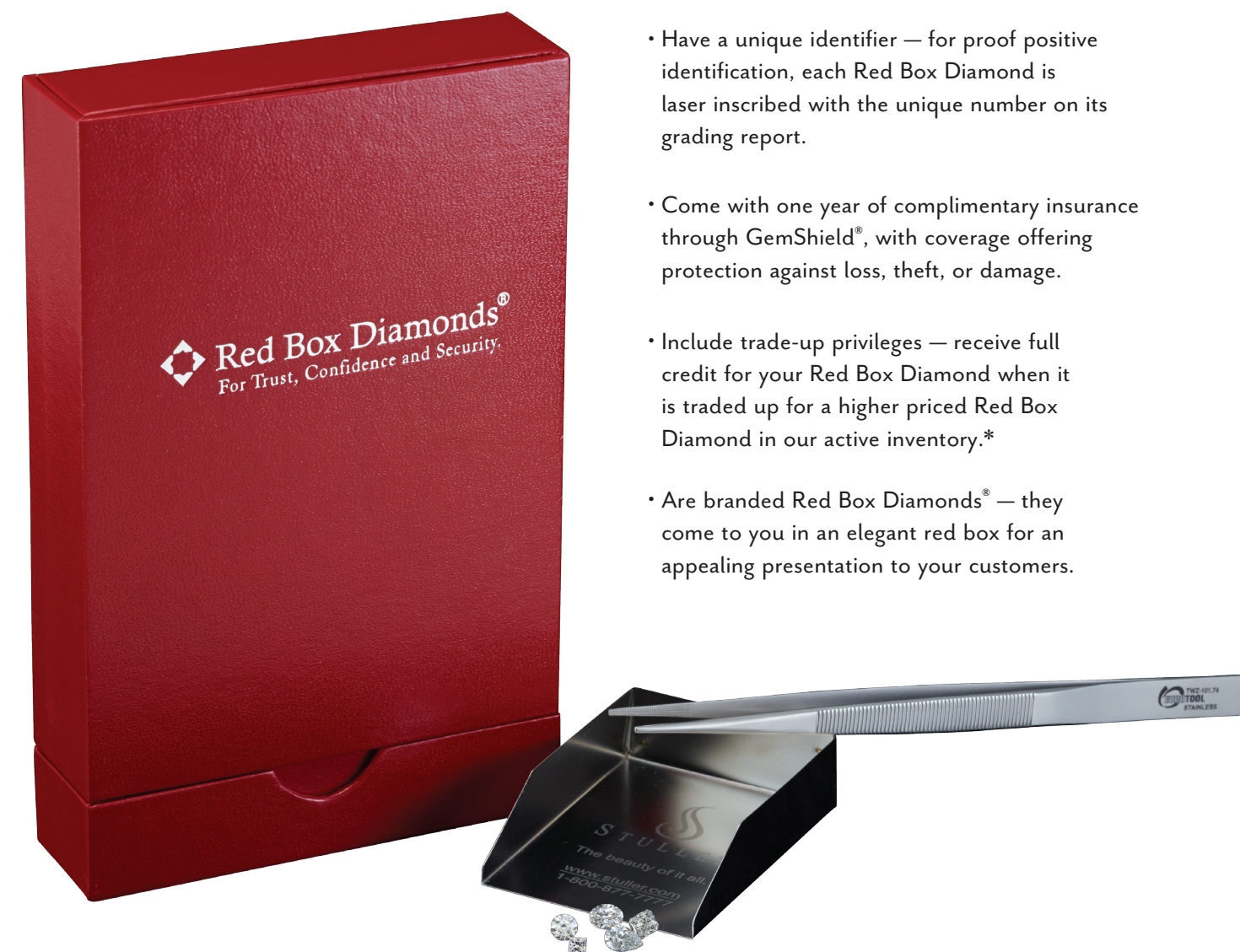
Platinum is nickel-free and hypoallergenic.

diamonds

More often than not, the center diamond of an engagement ring is a larger investment than the ring itself. Platinum has a dense, compact structure that makes it stronger and more enduring. Regardless of the metal of the shank, a diamond deserves to be secured in a platinum head.

DIAMONDS FROM STULLER

- Have a unique identifier — for proof positive identification, each Red Box Diamond is laser inscribed with the unique number on its grading report.
- Come with one year of complimentary insurance through GemShield®, with coverage offering protection against loss, theft, or damage.
- Include trade-up privileges — receive full credit for your Red Box Diamond when it is traded up for a higher priced Red Box Diamond in our active inventory.*
- Are branded Red Box Diamonds® — they come to you in an elegant red box for an appealing presentation to your customers.



Engage With Forever

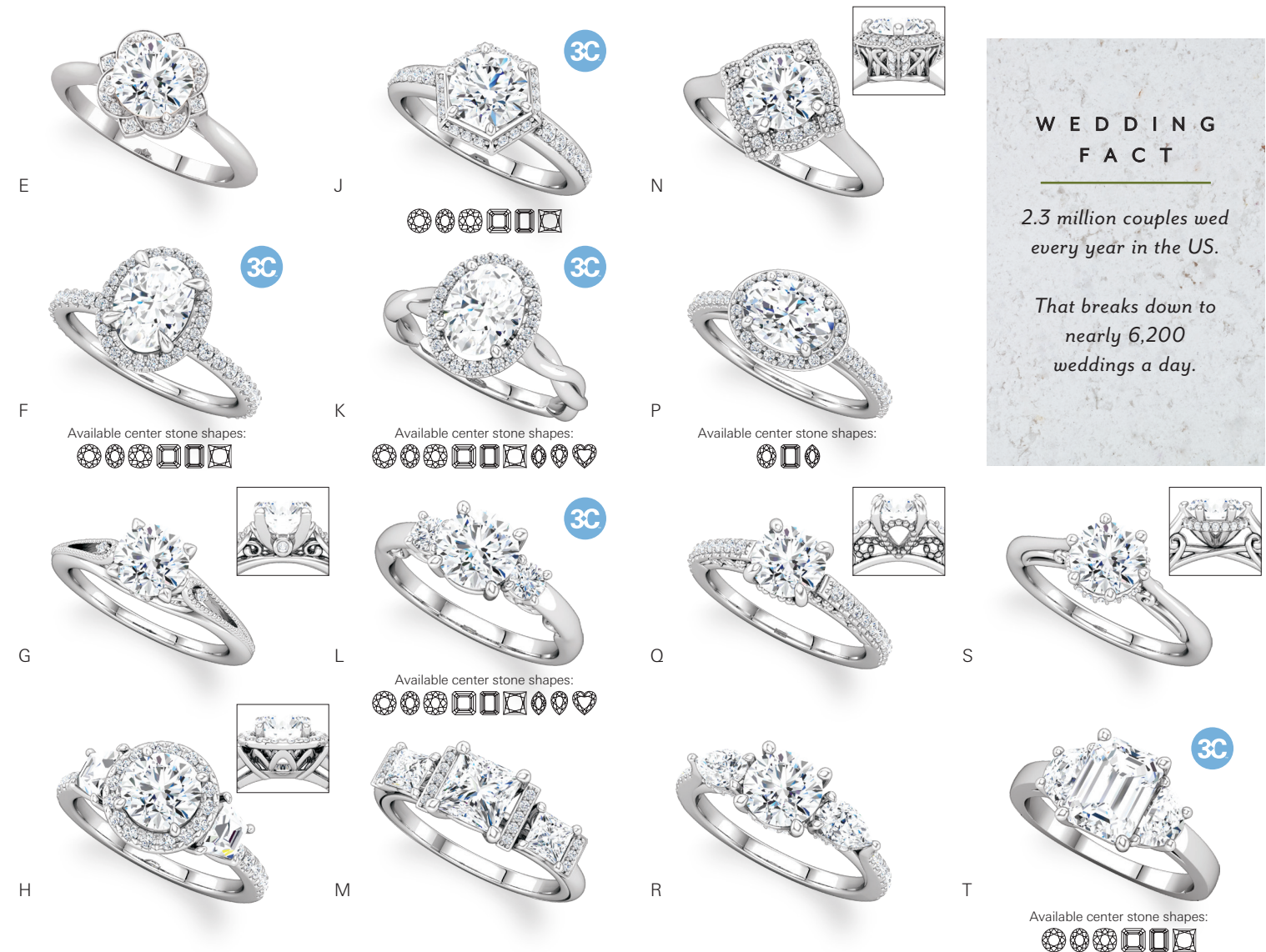
The platinum engagement ring — an icon of timeless style embraces new trends.



A. **122797** Round-Shape Solitaire Engagement Ring, 1 CT Center (6.5mm), Platinum, size 7, **\$1,609**
 B. **123227** Round-Shape French-Set Halo-Style Semi-Set Engagement Ring, 1 CT Center (6.5mm), 3/8 CTW, Platinum, 32, size 7, **\$1,475**. Mounting 123227, \$955.
 C. **122924** Oval-Shape Three-Stone Semi-Set Engagement Ring, 1 CT Center (8x6mm), 1/4 CTW, Platinum, 117, size 7, **\$2,265**. Mounting 122924, **\$1,235**.
 D. **123308** Cushion-Shape Semi-Set Engagement Ring, 1 1/4 CT Center (6x6mm), 1/5 CTW, Platinum, 32, size 7, **\$2,115**. Mounting 123308, **\$1,279**.

View more at Stuller.com/PlatinumBridal.

Engagement Rings



E. **123505** Round-Shape Halo-Style Semi-Set Engagement Ring, 1 CT Center (6.5mm), 1/8 CTW, Platinum, 32, size 7, **\$1,529**. Mounting 123505, **\$1,265**. Matching band 123505.
 F. **123310** Oval-Shape Halo-Style Semi-Set Engagement Ring, 1 CT Center (8x6mm), 3/8 CTW, Platinum, 32, size 7, **\$2,569**. Mounting 123310, **\$1,145**. Matching band 123311.
 G. **123511** Round-Shape Vintage-Inspired Semi-Set Engagement Ring, 1 CT round (6.5mm), 0.03 CTW, Platinum, 32, size 7, **\$1,415**. Mounting 123511, **\$1,289**. Matching band 123511.
 H. **123481** Round-Shape Halo-Style Semi-Set Engagement Ring, 1 CT Center (6.5mm), 3/4 CTW, Platinum, 32, 241, size 7, **\$6,559**. Mounting 123481, **\$1,565**. Matching band 123481.
 J. **122836** Round-Shape Halo-Style Semi-Set Engagement Ring, 1 CT Center (6.5mm), 1/4 CTW, Platinum, 32, size 7, **\$2,235**. Mounting 122836, **\$1,509**. Matching band 122837.
 K. **123337** Oval-Shape Halo-Style Semi-Set Engagement Ring, 1 CT Center (8x6mm), 1/8 CTW, Platinum, 32, size 7, **\$1,849**. Mounting 123337, **\$1,325**. Matching band 51748.
 L. **122907** Round-Shape Three-Stone Semi-Set Engagement Ring, 1 CT Center (6.5mm), 1/5 CTW, Platinum, 32, size 7, **\$2,055**. Mounting 122907, **\$1,499**. Matching band 51625.
 M. **123516** Square-Shape Three-Stone Semi-Set Engagement Ring, 1 CT Center (5.5x5.5mm), 1/2 CTW, Platinum, 32, 35, size 7, **\$3,655**. Mounting 123516, **\$1,629**. Matching band 123516.
 N. **123236** Round-Shape Halo-Style Semi-Set Engagement Ring, 1 CT Center (6.5mm), 1/8 CTW, Platinum, 32, size 7, **\$1,645**. Mounting 123236, **\$1,485**. Matching band 123236.
 P. **123066** Oval-Shape Halo-Style Semi-Set Engagement Ring, 1 CT Center (8x6mm), 1/4 CTW, Platinum, 32, size 7, **\$1,915**. Mounting 123066, **\$1,095**. Matching band 122145.
 Q. **123354** Round-Shape Vintage-Inspired Semi-Set Engagement Ring, 1 CT Center (6.5mm), 1/4 CTW, Platinum, 32, size 7, **\$1,985**. Mounting 123354, **\$1,465**. Matching band 123354.
 R. **123480** Round-Shape Three-Stone Semi-Set Engagement Ring, 1 CT Center (6.5mm), 3/4 CTW, Platinum, 32, 117, size 7, **\$4,315**. Mounting 123480, **\$1,285**. Matching band 123480.
 S. **123488** Round-Shape Semi-Set Engagement Ring, 1 CT Center (6.5mm), 0.06 CTW, Platinum, 32, size 7, **\$1,555**. Mounting 123488, **\$1,519**. Matching band 123488.
 T. **122104** Emerald-Shape Three-Stone Semi-Set Engagement Ring, 1 1/4 CT Center (8x6mm), 1/2 CTW, Platinum, 32, 242, size 7, **\$9,089**. Mounting 122104, **\$1,455**. Matching band 51350.

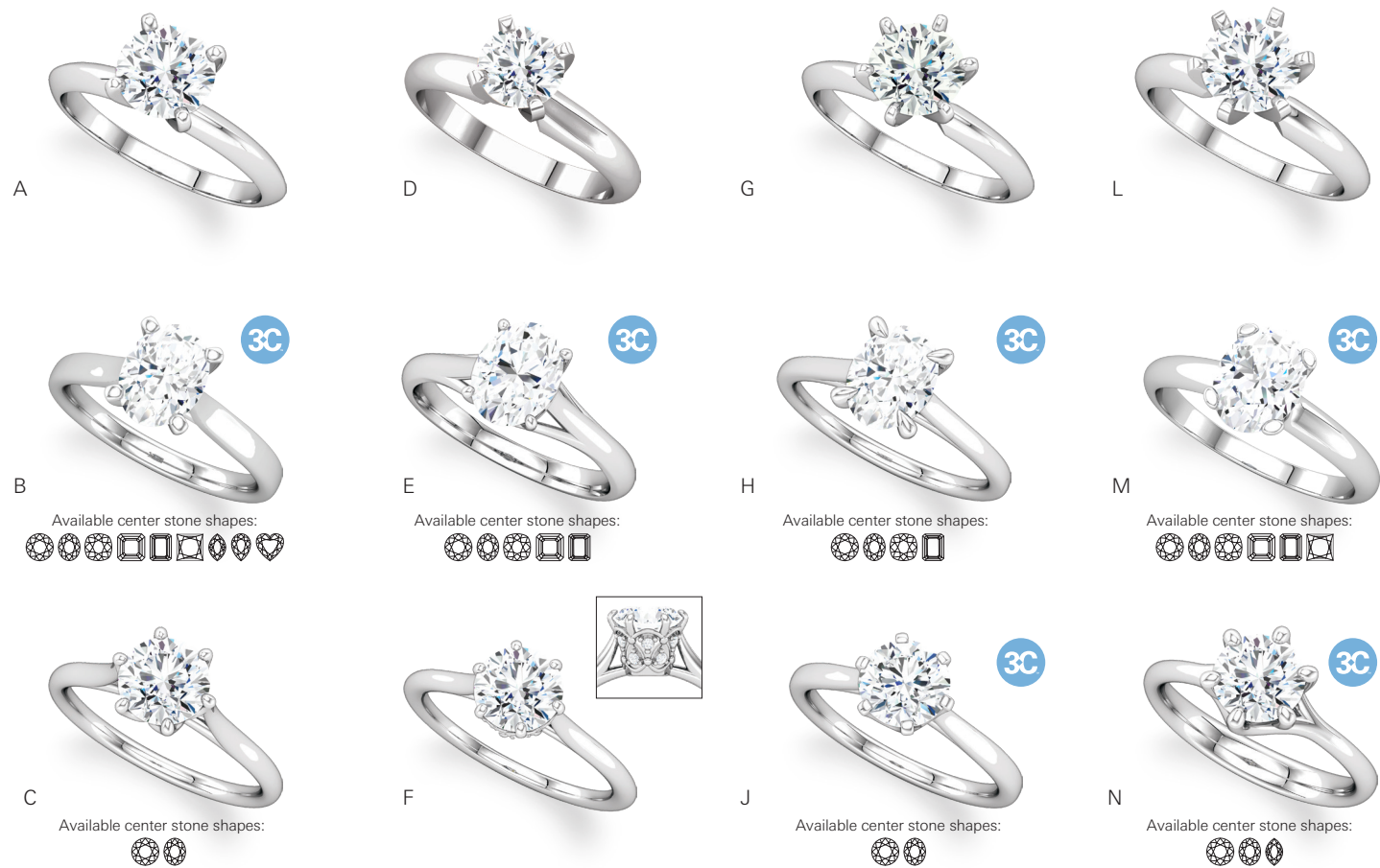
WEDDING FACT

2.3 million couples wed every year in the US.

That breaks down to nearly 6,200 weddings a day.

Need a Matching Band?

Find your perfect match on Stuller.com.



DIAMONDS

Shop thousands of diamonds at [Stuller.com/Diamonds](https://www.stuller.com/Diamonds).

BRIDE FACT

The average age of a bride in the U.S. is 25.3 years old.

- A. **140401L** Round-Shape 4-Prong Light Solitaire Engagement Ring, 1 CT Center (6.5mm), Platinum, size 6, **\$899**. Matching band 10241.
- B. **122089** Oval-Shape Solitaire Engagement Ring, 1 CT Center (8x6mm), Platinum, size 7, **\$1,329**. Matching band 51220.
- C. **123054** Round-Shape Solitaire Engagement Ring, 1 CT Center (6.5mm), Platinum, size 7, **\$1,025**. Matching band 51635.
- D. **140401H** Round-Shape 4-Prong Heavy Solitaire Engagement Ring, 1 CT Center (6.5mm), Platinum, size 6, **\$1,125**. Matching band 10241.
- E. **122047** Oval-Shape Solitaire Engagement Ring, 1 CT Center (8x6mm), Platinum, size 7, **\$1,195**. Matching band 51249.
- F. **122995** Round-Shape Semi-Set Engagement Ring, 1 CT Center (6.5mm), 0.05 CTW, Platinum, 32, size 7, **\$1,749**. Mounting 122995, **\$1,495**. Matching band 122995.
- G. **140309L** Round-Shape 6-Prong Light Solitaire Engagement Ring, 1 CT Center (6.5mm), Platinum, size 6, **\$835**. Matching band 10241.
- H. **122969** Oval-Shape Solitaire Engagement Ring, 1 CT Center (8x6mm), Platinum, size 7, **\$1,105**. Matching band 51237.
- I. **122004** Round-Shape Solitaire Engagement Ring, 1 CT Center (6.5mm), Platinum, size 7, **\$955**. Matching band 51236.
- J. **123018** Emerald-Shape Solitaire Engagement Ring, 1 3/4 CT Center (8x6mm), Platinum, size 7, **\$1,465**. Matching band 51645.
- K. **122089** Oval-Shape Solitaire Engagement Ring, 1 CT Center (8x6mm), Platinum, size 7, **\$1,329**. Matching band 51220.
- L. **140309H** Round-Shape 6-Prong Heavy Solitaire Engagement Ring, 1 CT Center (6.5mm), Platinum, size 6, **\$1,145**. Matching band 10241.
- M. **122005** Oval-Shape Solitaire Engagement Ring, 1 CT Center (8x6mm), Platinum, size 7, **\$1,025**. Matching band 51791.
- N. **122118** Round-Shape Solitaire Engagement Ring, 1 CT Center (6.5mm), Platinum, size 7, **\$1,205**. Matching band 51228.
- O. **122011** Oval-Shape Solitaire Engagement Ring, 1 1/2 CT Center (9x7mm), Platinum, size 7, **\$1,805**. Matching band 51238.

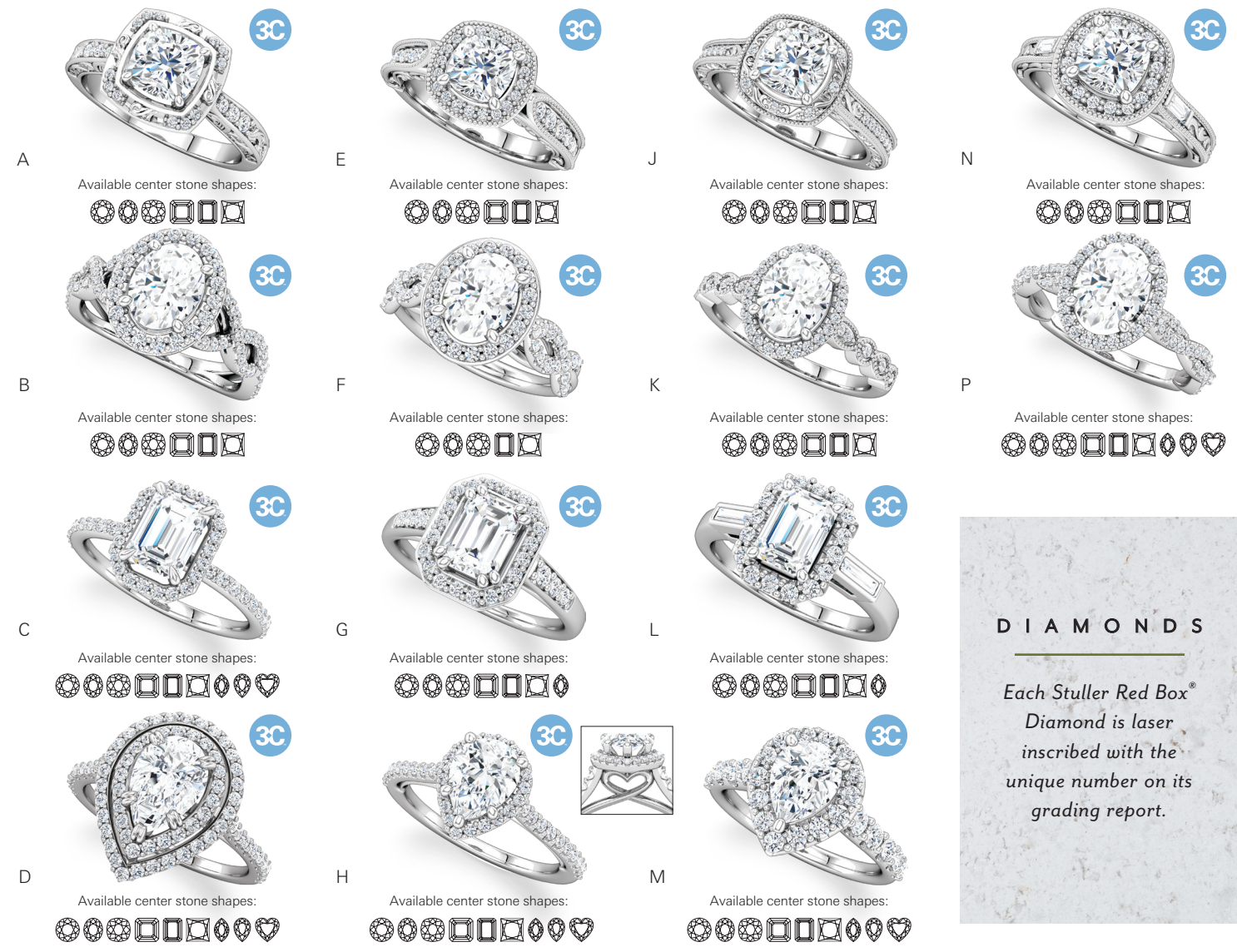
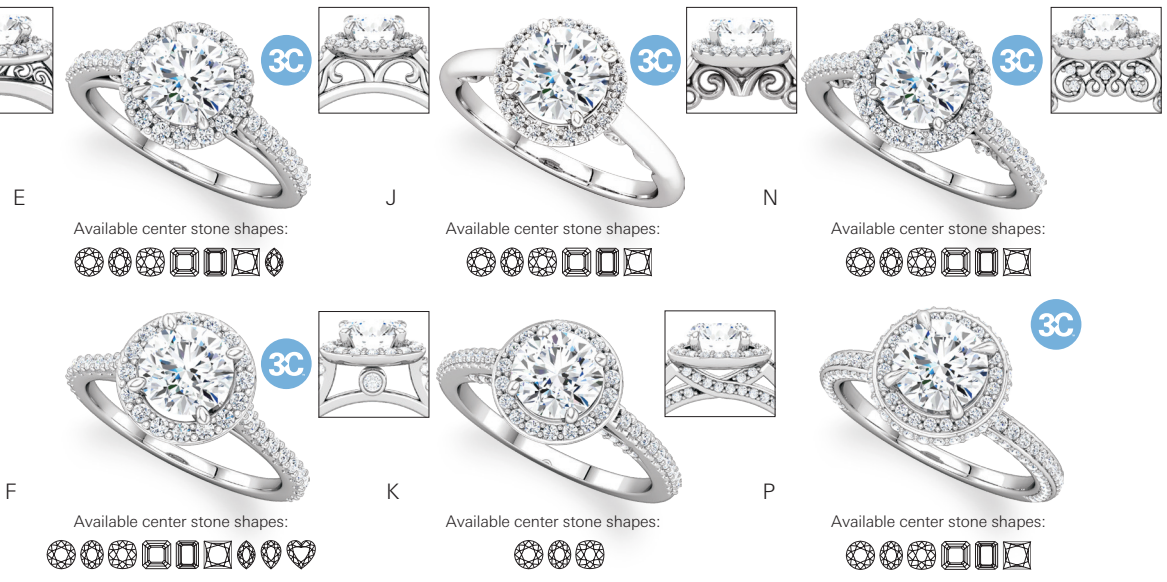
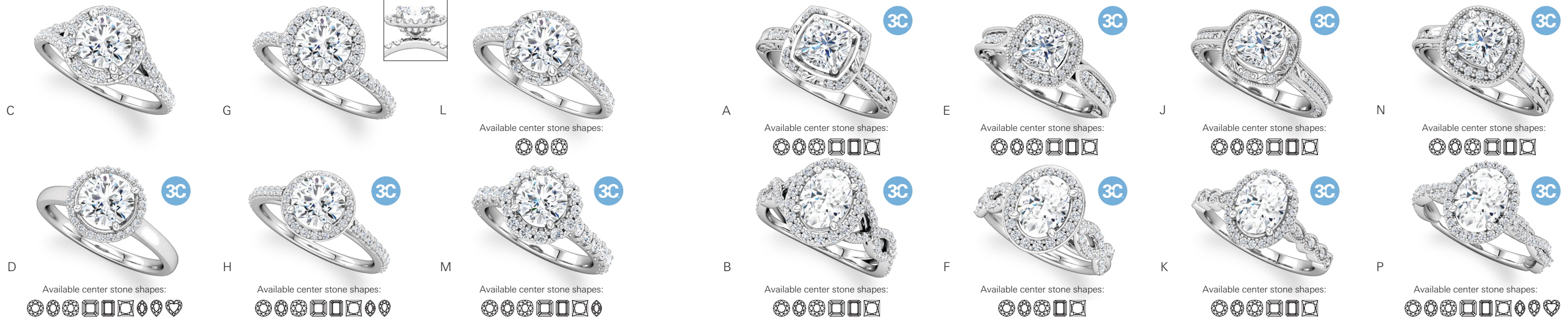
- A. **123059** Oval-Shape Solitaire Engagement Ring, 1 CT Center (8x6mm), Platinum, size 7, **\$1,279**. Matching band 51657.
- B. **123047** Round-Shape Solitaire Engagement Ring, 1 CT Center (6.5mm), Platinum, size 7, **\$1,639**. Matching band 123061.
- C. **122797** Round-Shape Solitaire Engagement Ring, 1 CT Center (6.5mm), Platinum, size 7, **\$1,609**. Matching band 51561.
- D. **122912** Round-Shape Semi-Set Engagement Ring, 1 CT Center (6.5mm), 0.025 CTW, Platinum, 32, size 7, **\$1,805**. Mounting 122912, **\$1,395**. Matching band 122944.
- E. **123060** Oval-Shape Solitaire Engagement Ring, 1 CT Center (8x6mm), Platinum, size 7, **\$935**. Matching band 51658.
- F. **123217** Round-Shape Solitaire Engagement Ring, 1 CT Center (6.5mm), Platinum, size 7, **\$1,365**. Matching band 123217.
- G. **123290** Round-Shape Semi-Set Engagement Ring, 1 CT Center (6.5mm), 1/8 CTW, Platinum, 32, size 7, **\$1,409**. Mounting 123290, **\$1,229**. Matching band 123290.
- H. **122657** Round-Shape Solitaire Engagement Ring, 1 CT Center (6.5mm), Platinum, size 7, **\$1,499**. Matching band 51516.
- I. **123453** Oval-Shape Solitaire Engagement Ring, 1 CT Center (8x6mm), Platinum, size 7, **\$1,309**. Matching band 51797.
- J. **123050** Round-Shape Solitaire Engagement Ring, 1 CT Center (6.5mm), Platinum, size 7, **\$1,145**. Matching band 123050.
- K. **123555** Round-Shape Vintage-Inspired Semi-Set Engagement Ring, 1 CT Center (6.5mm), .02 CTW, Platinum, 32, size 7, **\$1,099**. Mounting 123555, **\$945**. Matching band 123555.
- L. **122903** Round-Shape Solitaire Engagement Ring, 1 CT Center (6.5mm), Platinum, size 7, **\$1,585**. Matching band 51599.
- M. **123548** Round-Shape Semi-Set Engagement Ring, 1 CT Center (6.5mm), 0.04 CTW, Platinum, 32, size 7, **\$1,125**. Mounting 123548, **\$1,075**. Matching band 123548.
- N. **123185** Round-Shape Semi-Set Engagement Ring, 1 CT Center (6.5mm), 0.03 CTW, Platinum, 32, size 7, **\$1,405**. Mounting 123185, **\$1,205**. Matching band 123185.

Order any flexible 3C design in platinum.

Choose an individually-graded Red Box Diamond®. Visit [Stuller.com/RedBox](https://www.stuller.com/RedBox) to view our wide selection.

RING FACT

Round is overwhelmingly the most popular diamond shape, accounting for 53% of engagement ring sales. Princess cut is a not-too-distant second place at 30%.



DIAMONDS

Each Stuller Red Box® Diamond is laser inscribed with the unique number on its grading report.

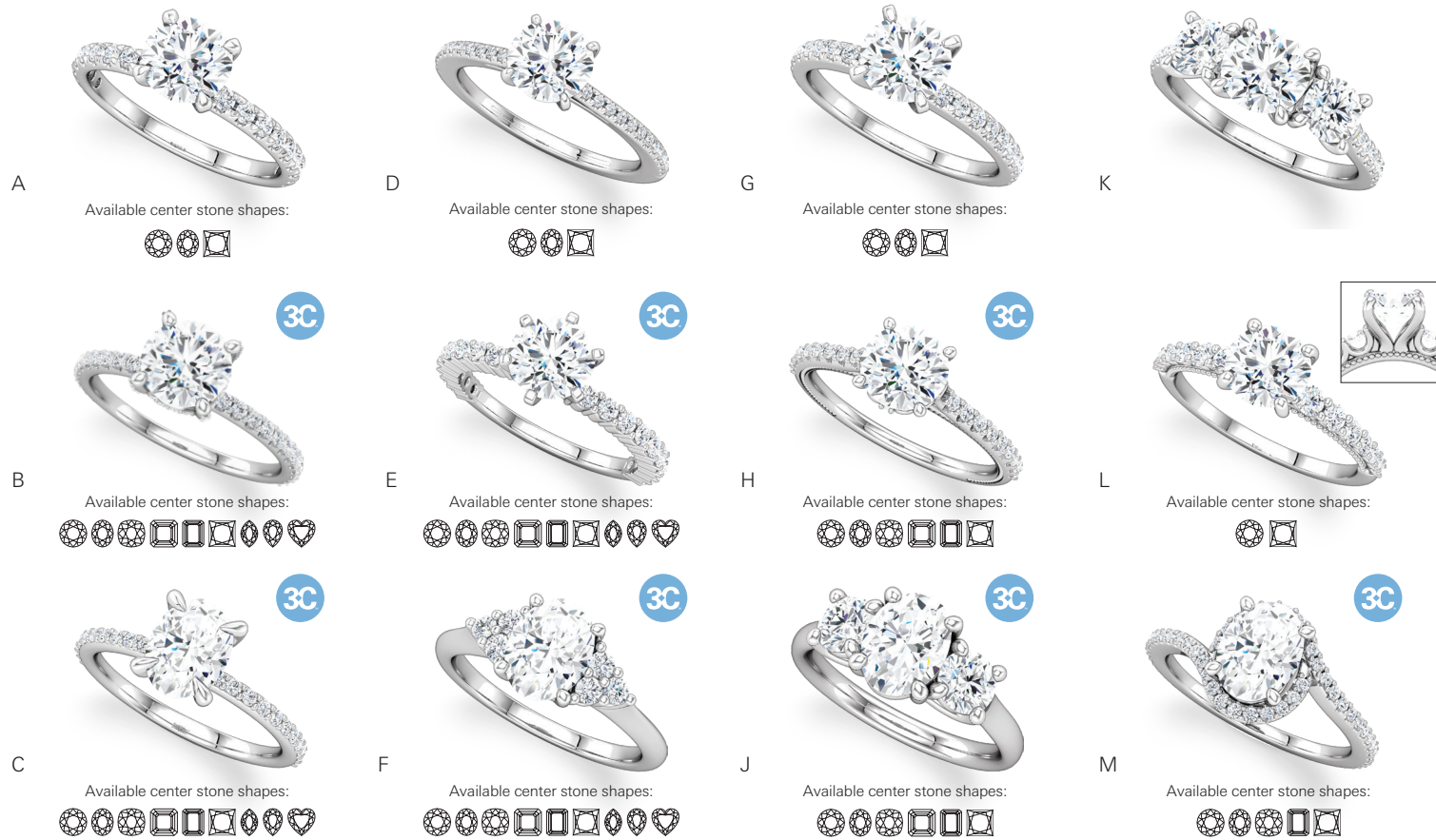
- A. **122854** Round-Shape Halo-Style Semi-Set Engagement Ring, 1 CT Center (6.5mm), ¼ CTW, Platinum, 32, size 7, **\$2,075**. Mounting 122854, **\$1,395**. Matching band 51594.
- B. **122888** Round-Shape Halo-Style Semi-Set Engagement Ring, 1 CT Center (6.5mm), ¾ CTW, Platinum, 32, size 7, **\$2,795**. Mounting 122888, **\$1,555**. Matching band 122890.
- C. **123582** Round-Shape French-Set Halo-Style Semi-Set Engagement Ring, 1 CT Center (6.5mm), ⅓ CTW, Platinum, 32, size 7, **\$2,559**. Mounting 123582, **\$1,185**. Matching band 123582.
- D. **122060** Round-Shape Halo-Style Semi-Set Engagement Ring, 1 CT Center (6.5mm), ⅒ CTW, Platinum, 32, size 7, **\$1,775**. Mounting 122060, **\$1,375**. Matching band 51254.
- E. **122842** Round-Shape Halo-Style Semi-Set Engagement Ring, 1 CT Center (6.5mm), ¼ CTW, Platinum, 32, size 7, **\$2,269**. Mounting 122842, **\$1,235**. Matching band 122843.
- F. **122870** Round-Shape Halo-Style Semi-Set Engagement Ring, 1 CT Center (6.5mm), ⅓ CTW, Platinum, 32, size 7, **\$2,395**. Mounting 122870, **\$1,105**. Matching band 122871.
- G. **123496** Round-Shape Halo-Style Semi-Set Engagement Ring, 1 CT Center (6.5mm), ⅓ CTW, Platinum, 32, size 7, **\$2,209**. Mounting 123496, **\$965**. Matching band 123041.
- H. **121987** Round-Shape Halo-Style Semi-Set Engagement Ring, 1 CT Center (6.5mm), ¼ CTW, Platinum, 32, size 7, **\$1,935**. Mounting 121987, **\$965**. Matching band 122145.
- I. **123082** Round-Shape Halo-Style Semi-Set Engagement Ring, 1 CT Center (6.5mm), ⅒ CTW, Platinum, 32, size 7, **\$1,879**. Mounting 123082, **\$1,439**. Matching band 123147.
- J. **123174** Round-Shape Halo-Style Semi-Set Engagement Ring, 1 CT Center (6.5mm), ¼ CTW, Platinum, 32, size 7, **\$2,019**. Mounting 123174, **\$1,365**. Matching band 123194.
- K. **123385** Oval-Shape Halo-Style Semi-Set Engagement Ring, 1 CT Center (8x6mm), ⅓ CTW, Platinum, 32, size 7, **\$2,185**. Mounting 123385, **\$1,399**. Matching band 123386.
- L. **123227** Round-Shape French-Set Halo-Style Semi-Set Engagement Ring, 1 CT Center (6.5mm), ⅓ CTW, Platinum, 32, size 7, **\$1,475**. Mounting 123227, **\$955**. Matching band 123227.
- M. **122804** Round-Shape Halo-Style Semi-Set Engagement Ring, 1 CT Center (6.5mm), ¼ CTW, Platinum, 32, size 7, **\$3,595**. Mounting 122804, **\$1,609**. Matching band 122805.
- N. **122909** Round-Shape Halo-Style Semi-Set Engagement Ring, 1 CT Center (6.5mm), ⅓ CTW, Platinum, 32, size 7, **\$2,959**. Mounting 122909, **\$1,425**. Matching band 122959.
- O. **123271** Round-Shape Halo-Style Semi-Set Engagement Ring, 1 CT Center (6.5mm), ½ CTW, Platinum, 32, size 7, **\$3,855**. Mounting 123271, **\$1,705**. Matching band 123272.
- A. **121981** Cushion-Shape Halo-Style Semi-Set Engagement Ring, 1¼ CT Center (6x6mm), ⅒ CTW, Platinum, 32, size 7, **\$2,039**. Mounting 121981, **\$1,689**. Matching band 51247.
- B. **122892** Oval-Shape Halo-Style Semi-Set Engagement Ring, 1 CT Center (8x6mm), ⅓ CTW, Platinum, 32, size 7, **\$3,489**. Mounting 122892, **\$1,895**. Matching band 122893.
- C. **123333** Emerald-Shape Halo-Style Semi-Set Engagement Ring, 1¼ CT Center (7x5mm), ¼ CTW, Platinum, 32, size 7, **\$2,159**. Mounting 123333, **\$1,115**. Matching band 123334.
- D. **122087** Pear-Shape Halo-Style Semi-Set Engagement Ring, 1¼ CT Center (9x6mm), ¾ CTW, Platinum, 32, size 7, **\$2,945**. Mounting 122087, **\$1,189**. Matching band 122123.
- E. **122864** Cushion-Shape Halo-Style Semi-Set Engagement Ring, 1¼ CT Center (6x6mm), ⅓ CTW, Platinum, 32, size 7, **\$3,075**. Mounting 122864, **\$2,155**. Matching band 122865.
- F. **122965** Oval-Shape Halo-Style Semi-Set Engagement Ring, 1 CT Center (8x6mm), ½ CTW, Platinum, 32, size 7, **\$2,869**. Mounting 122965, **\$1,555**. Matching band 122966.
- G. **122207** Emerald-Shape Halo-Style Semi-Set Engagement Ring, 1¼ CT Center (7x5mm), ¼ CTW, Platinum, 32, size 7, **\$2,485**. Mounting 122207, **\$1,715**. Matching band 122208.
- H. **123348** Pear-Shape Halo-Style Semi-Set Engagement Ring, 1¼ CT Center (9x6mm), ⅓ CTW, Platinum, 32, size 7, **\$2,485**. Mounting 123348, **\$1,399**. Matching band 123349.
- J. **123038** Cushion-Shape Halo-Style Semi-Set Engagement Ring, 1¼ CT Center (6x6mm), ⅓ CTW, Platinum, 32, size 7, **\$2,859**. Mounting 123038, **\$2,179**. Matching band 123040.
- K. **123385** Oval-Shape Halo-Style Semi-Set Engagement Ring, 1 CT Center (8x6mm), ⅓ CTW, Platinum, 32, size 7, **\$2,185**. Mounting 123385, **\$1,399**. Matching band 123386.
- L. **122884** Emerald-Shape Halo-Style Semi-Set Engagement Ring, 1¼ CT Center (7x5mm), ¼ CTW, Platinum, 32, size 7, **\$3,049**. Mounting 122884, **\$1,735**. Matching band 51596.
- M. **123541** Pear-Shape Halo-Style Semi-Set Engagement Ring, 1¼ CT Center (9x6mm), 1 CTW, Platinum, 32, size 7, **\$4,075**. Mounting 123541, **\$1,855**. Matching band 123542.
- N. **123242** Cushion-Shape Halo-Style Semi-Set Engagement Ring, 1¼ CT Center (6x6mm), ⅓ CTW, Platinum, 21, 32, size 7, **\$2,769**. Mounting 123242, **\$2,045**. Matching band 51767.
- P. **123267** Oval-Shape Halo-Style Semi-Set Engagement Ring, 1 CT Center (8x6mm), ¼ CTW, Platinum, 32, size 7, **\$2,825**. Mounting 123267, **\$1,365**. Matching band 123268.

More Choices?
See all our platinum bridal at Stuller.com/PlatinumCenter.

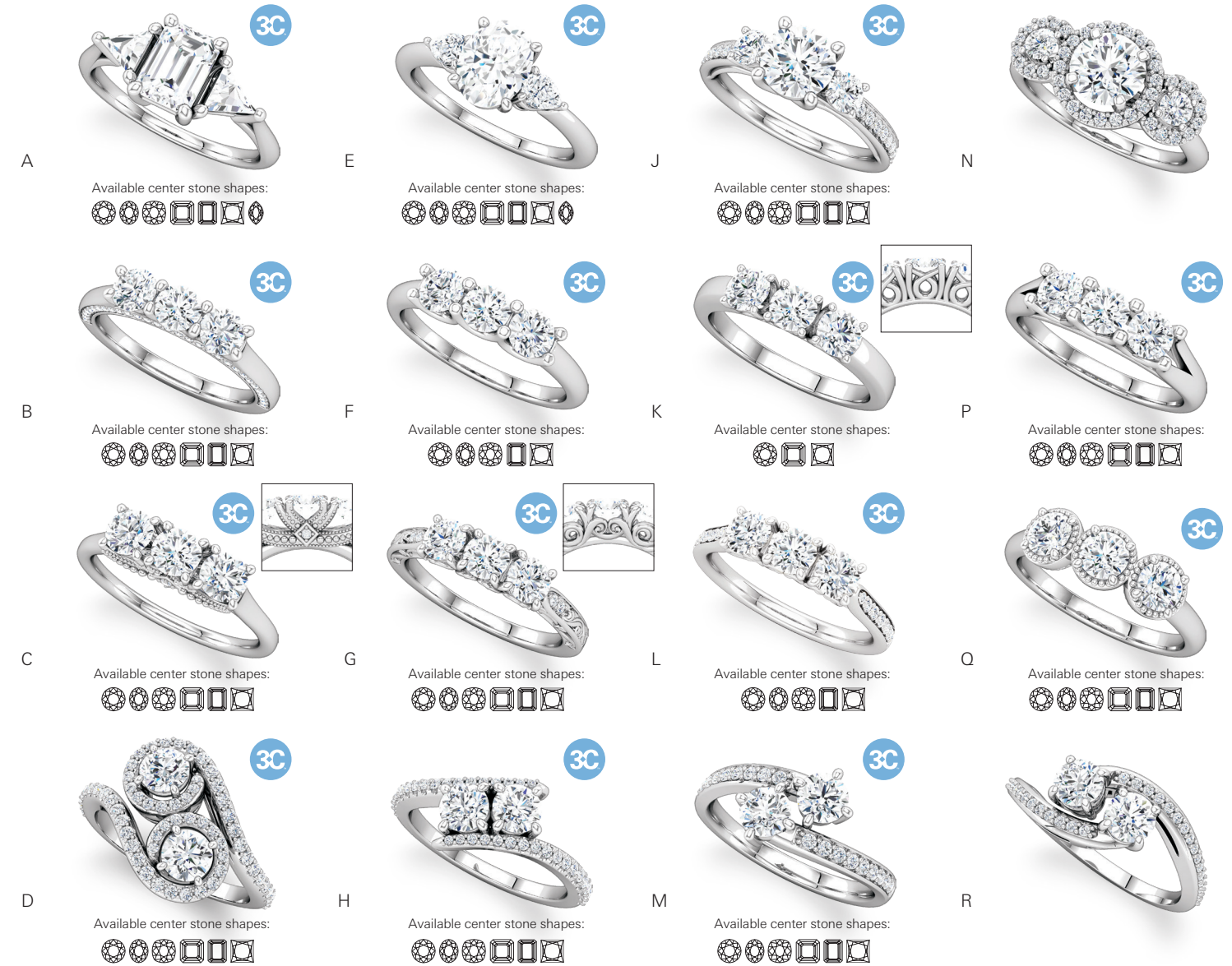
CanadaMark™ Red Box Diamonds® and Melee
Responsibly mined and traceable from mine to market.

ENGAGEMENT FACT

Grooms spend three months looking at engagement rings before making their final choice.



- A. **123229** Round-Shape French-Set Semi-Set Engagement Ring, 1 CT Center (6.5mm), 1/3 CTW, Platinum, 32, size 7, **\$1,699**. Mounting 123229, **\$935**. Matching band 123229.
- B. **122996** Round-Shape Semi-Set Engagement Ring, 1 CT Center (6.5mm), 3/8 CTW, Platinum, 32, size 7, **\$1,975**. Mounting 122996, **\$825**.
- C. **122790** Oval-Shape Semi-Set Engagement Ring, 1 CT Center (8x6mm), 1/5 CTW, Platinum, 32, size 7, **\$1,639**. Mounting 122790, **\$1,005**. Matching band 122814.
- D. **123122** Round-Shape French-Set Semi-Set Engagement Ring, 1 CT Center (6.5mm), 1/10 CTW, Platinum, 32, size 7, **\$1,459**. Mounting 123122, **\$1,095**. Matching band 123123.
- E. **122795** Round-Shape Semi-Set Engagement Ring, 1 CT Center (6.5mm), 1/2 CTW, Platinum, 32, size 7, **\$2,169**. Mounting 122795, **\$995**. Matching band 122796.
- F. **123461** Oval-Shape Semi-Set Engagement Ring, 1 CT Center (8x6mm), 1/5 CTW, Platinum, 32, size 7, **\$1,789**. Mounting 123461, **\$1,299**. Matching band 51800.
- G. **123426** Round-Shape French-Set Semi-Set Engagement Ring, 1 CT Center (6.5mm), 3/8 CTW, Platinum, 32, size 7, **\$2,125**. Mounting 123426, **\$1,135**. Matching band 123427.
- H. **122993** Round-Shape Semi-Set Engagement Ring, 1 CT Center (6.5mm), 1/4 CTW, Platinum, 32, size 7, **\$1,575**. Mounting 122993, **\$929**. Matching band 122994.
- J. **122105** Oval-Shape Three-Stone Semi-Set Engagement Ring, 1 CT Center (8x6mm), 3/4 CTW, Platinum, 32, size 7, **\$6,035**. Mounting 122105, **\$1,519**. Matching band 51226.
- K. **123447** Round-Shape French-Set Semi-Set Engagement Ring, 1 CT Center (6.5mm), 1 CTW, Platinum, 32, size 7, **\$7,765**. Mounting 123447, **\$1,205**. Matching band 123447.
- L. **123257** Round-Shape Semi-Set Engagement Ring, 1 CT Center (6.5mm), 1/5 CTW, Platinum, 32, size 7, **\$1,539**. Mounting 123257, **\$939**. Matching band 123257.
- M. **123022** Oval-Shape Halo-Style Semi-Set Engagement Ring, 1 CT Center (8x6mm), 1/4 CTW, Platinum, 32, size 7, **\$2,305**. Mounting 123022, **\$1,235**. Matching band 123028.



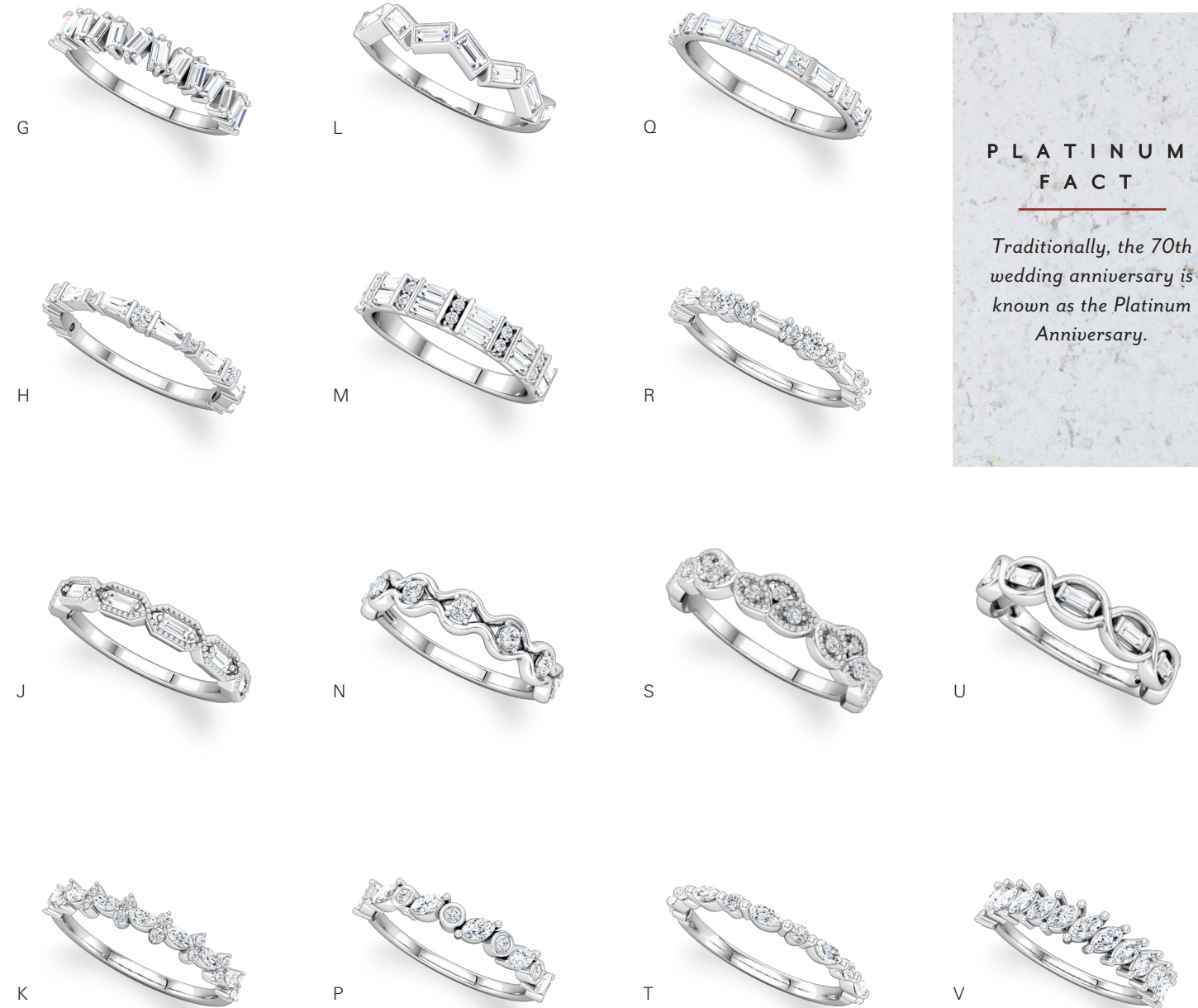
- A. **122119** Emerald-Shape Three-Stone Semi-Set Engagement Ring, 1 1/4 CT Center (7x5mm), 3/8 CTW, Platinum, 32, 602, size 7, **\$3,165**. Mounting 122119, **\$1,215**. Matching band 51229.
- B. **123477** Round-Shape Three-Stone Diamond Anniversary Band, (4.1mm), 3/4 CTW, Platinum, 32, size 7, **\$5,505**. Mounting 123477, **\$1,495**.
- C. **123222** Round-Shape Three-Stone Diamond Anniversary Band, (4.1mm), 3/4 CTW, Platinum, 32, size 7, **\$4,655**. Mounting 123222, **\$1,175**.
- D. **123107** Round-Shape Two-Stone Semi-Set Ring, 1/3 CT Centers (4.4mm), 1/3 CTW, Platinum, 32, size 7, **\$3,415**. Mounting 123107, **\$1,909**. Matching band 123119.
- E. **122924** Oval-Shape Three-Stone Semi-Set Engagement Ring, 1 CT Center (8x6mm), 1/4 CTW, Platinum, 32, 117, size 7, **\$2,265**. Mounting 122924, **\$1,235**. Matching band 51598.
- F. **123179** Round-Shape Three-Stone Diamond Anniversary Band, (4.1mm), 3/4 CTW, Platinum, 32, size 7, **\$4,559**. Mounting 123179, **\$1,209**.
- G. **123266** Round-Shape Three-Stone Diamond Anniversary Band, (4.1mm), 3/4 CTW, Platinum, 32, size 7, **\$4,899**. Mounting 123266, **\$1,389**.
- H. **123077** Round-Shape Two-Stone Semi-Set Ring, 1/3 CT Centers (4.4mm), 1/2 CTW, Platinum, 32, size 7, **\$2,305**. Mounting 123077, **\$1,485**. Matching band 123078.
- J. **122000** Round-Shape Three-Stone Semi-Set Engagement Ring, 1 CT Center (6.5mm), 1/2 CTW, Platinum, 32, size 7, **\$3,185**. Mounting 122000, **\$1,345**. Matching band 122154.
- K. **122858** Round-Shape Three-Stone Diamond Anniversary Band, (4.1mm), 3/4 CTW, Platinum, 32, size 7, **\$4,915**. Mounting 122858, **\$1,475**.
- L. **123332** Round-Shape Three-Stone Diamond Anniversary Band, (4.1mm), 3/4 CTW, Platinum, 32, size 7, **\$5,089**. Mounting 123332, **\$1,279**.
- M. **122933** Round-Shape Two-Stone Semi-Set Ring, 1/3 CT Centers (4.4mm), 1/5 CTW, Platinum, 32, size 7, **\$1,909**. Mounting 122933, **\$1,385**. Matching band 122936.
- N. **123485** Round-Shape Three-Stone Semi-Set Engagement Ring, 1 CT Center (6.5mm), 3/8 CTW, Platinum, 32, size 7, **\$1,665**. Mounting 123485, **\$1,599**. Matching band 123485.
- P. **123350** Round-Shape Three-Stone Diamond Anniversary Band, (4.1mm), 3/4 CTW, Platinum, 32, size 7, **\$4,695**. Mounting 123350, **\$1,345**.
- Q. **123435** Round-Shape Three-Stone Diamond Anniversary Band, (4.1mm), 3/4 CTW, Platinum, 32, size 7, **\$4,855**. Mounting 123435, **\$1,415**.
- R. **122931** Round-Shape Two-Stone Semi-Set Ring, 1/3 CT Centers (4.4mm), 1/5 CTW, Platinum, 32, size 7, **\$1,915**. Mounting 122931, **\$1,345**. Matching band 122931.

A Circle of Life

Platinum's indelible strength holds each diamond and every detail.



- A. **123225** Diamond Eternity Band, $\frac{3}{8}$ CTW, Platinum, 32, size 7, **\$2,725**. Mounting 123225, \$699.
- B. **123423** Diamond Anniversary Band, $\frac{1}{6}$ CTW, Platinum, 32, size 7, **\$1,145**. Mounting 123423, \$929.
- C. **123601** Diamond Eternity Band, $\frac{1}{2}$ CTW, Platinum, 32, size 7, **\$2,075**. Mounting 123601, \$499.
- D. **123420** Diamond Anniversary Band, $\frac{1}{3}$ CTW, Platinum, 32, size 7, **\$1,435**. Mounting 123420, \$1,165.
- E. **123628** Round-Shape Diamond Eternity Band, 2mm, $\frac{5}{8}$ CTW, Platinum, 32, size 7, **\$2,565**. Mounting 123628, \$595.
- F. **123421** Diamond Anniversary Band, $\frac{1}{3}$ CTW, Platinum, 32, size 7, **\$1,419**. Mounting 123421, \$685.



- G. **123573** Diamond Anniversary Band, $\frac{1}{2}$ CTW, Platinum, 21, size 7, **\$1,895**. Mounting 123573, \$979.
- H. **123572** Diamond Anniversary Band, $\frac{1}{2}$ CTW, Platinum, 21, 32, size 7, **\$2,395**. Mounting 123572, \$819.
- J. **123533** Diamond Anniversary Band, $\frac{1}{6}$ CTW, Platinum, 21, size 7, **\$1,649**. Mounting 123533, \$1,135.
- K. **123392** Diamond Anniversary Band, $\frac{3}{8}$ CTW, Platinum, 26, 32, size 7, **\$1,975**. Mounting 123392, \$865. Eternity 123393
- L. **123534** Diamond Anniversary Band, $\frac{1}{3}$ CTW, Platinum, 21, size 7, **\$1,919**. Mounting 123534, \$949.
- M. **123531** Diamond Anniversary Band, $\frac{1}{2}$ CTW, Platinum, 21, 32, size 7, **\$2,999**. Mounting 123531, \$1,339.
- N. **123588** Diamond Anniversary Band, $\frac{1}{6}$ CTW, Platinum, 32, size 7, **\$1,505**. Mounting 123588, \$1,185.
- P. **123575** Diamond Anniversary Band, $\frac{3}{8}$ CTW, Platinum, 26, 32, size 7, **\$2,569**. Mounting 123575, \$875.
- Q. **123585** Diamond Anniversary Band, $\frac{1}{2}$ CTW, Platinum, 21, 35, size 7, **\$2,345**. Mounting 123585, \$1,039. Eternity 123498
- R. **123549** Diamond Anniversary Band, $\frac{3}{8}$ CTW, Platinum, 21, 32, size 7, **\$2,155**. Mounting 123549, \$835. Eternity 123550
- S. **123546** Diamond Anniversary Band, $\frac{1}{6}$ CTW, Platinum, 32, size 7, **\$1,489**. Mounting 123546, \$1,225.
- T. **123502** Diamond Anniversary Band, $\frac{3}{8}$ CTW, Platinum, 26, 32, size 7, **\$1,745**. Mounting 123502, \$769. Eternity 123503
- U. **123646** Diamond Anniversary Band, $\frac{1}{4}$ CTW, Platinum, 21, size 7, **\$2,039**. Mounting 123646, \$579.
- V. **123483** Diamond Anniversary Band, $\frac{3}{8}$ CTW, Platinum, 26, size 7, **\$4,249**. Mounting 123483, \$1,135.

PLATINUM FACT

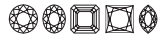
Traditionally, the 70th wedding anniversary is known as the Platinum Anniversary.

We add new platinum styles frequently.

Visit Stuller.com/New.



Round-Shape Diamond Band,
Platinum, 32, size 7
Available center stone shapes:



mm Stone	122978 Anniversary		122980 Eternity	
	CTW	Platinum	CTW	Platinum
1.5	1/3	\$1,185	5/8	\$2,445
1.7	1/3	\$1,925	3/4	\$2,659
2.0	1/2	\$2,145	9/10	\$2,995
2.25	1/2	\$2,645	1 1/8	\$4,045
2.5	3/4	\$2,899	1 1/2	\$4,369
2.75	1	\$3,625	1 5/8	\$5,225
3.0	1 1/8	\$4,105	2 1/8	\$6,559
3.2	1 1/8	\$4,275	2 3/8	\$7,139
3.4	1 1/2	\$5,685	2 7/8	\$9,415
3.5	1 3/8	\$7,189	2 7/8	\$12,855



Round-Shape Diamond Channel-Set Band,
Platinum, 32, size 7
Available center stone shapes:



mm Stone	122981 Anniversary		123096 Eternity	
	CTW	Platinum	CTW	Platinum
1.5	1/3	\$2,219	5/8	\$2,845
1.7	1/3	\$2,285	3/4	\$2,999
2.0	1/2	\$2,555	9/10	\$3,305
2.25	1/2	\$3,215	1 1/8	\$4,415
2.5	3/4	\$3,629	1 1/2	\$4,705
2.75	1	\$4,505	1 7/8	\$6,099
3.0	1	\$5,165	2 1/8	\$7,479
3.2	1 1/8	\$5,755	2 1/2	\$8,275
3.4	1 1/3	\$6,955	3	\$10,815
3.5	1 3/8	\$8,995	3	\$14,285



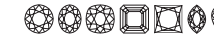
Round-Shape Diamond Band,
Platinum, 32, size 7
Available center stone shapes:



mm Stone	123629 Anniversary		123628 Eternity	
	CTW	Platinum	CTW	Platinum
2.0	3/8	\$1,805	5/8	\$2,565
2.25	3/8	\$1,979	3/4	\$3,239
2.5	1/2	\$2,255	1	\$3,525
2.8	5/8	\$2,815	1 1/3	\$4,485
3.0	7/8	\$3,385	1 3/8	\$4,735
3.2	1	\$3,985	1 3/4	\$5,735
3.4	1 1/4	\$4,999	1 9/10	\$6,709
3.5	1	\$5,119	2 1/8	\$9,169



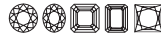
Round-Shape Diamond Band,
Platinum, 32, size 7
Available center stone shapes:



mm Stone	123486 Anniversary		123487 Eternity	
	CTW	Platinum	CTW	Platinum
1.5	1/5	\$1,495	1/2	\$2,159
1.7	1/4	\$1,605	5/8	\$2,339
2.0	1/3	\$1,795	3/4	\$2,689
2.25	3/8	\$2,209	1	\$3,745
2.5	1/2	\$2,369	1 3/8	\$4,185
2.8	5/8	\$2,835	1 3/4	\$5,475
3.0	3/4	\$3,089	2	\$6,285
3.2	3/4	\$3,409	2 1/4	\$6,845
3.4	1	\$4,379	2 5/8	\$9,009
3.5	1	\$5,275	2 7/8	\$12,925



Round-Shape Diamond Band,
Platinum, 32, size 7
Available center stone shapes:



mm Stone	123180 Anniversary		123191 Eternity	
	CTW	Platinum	CTW	Platinum
1.5	1/3	\$1,769	1/2	\$2,169
1.7	1/3	\$1,775	5/8	\$2,355
2.0	1/2	\$1,979	9/10	\$2,725
2.25	1/2	\$2,449	1	\$3,769
2.5	3/4	\$2,809	1 1/2	\$4,255
2.75	7/8	\$3,345	1 7/8	\$5,659
3.0	1	\$3,775	2 1/8	\$6,565
3.2	1 1/8	\$4,215	2 3/8	\$7,219
3.4	1 1/8	\$5,165	2 7/8	\$9,569
3.5	1 3/8	\$7,125	3	\$13,785

PLATINUM FACT

The majority (80%) of platinum is mined in South Africa. Nearly half of the platinum mined is used in catalytic converters, the part of the automobile that reduces toxic gases into less-toxic emissions. Platinum and other platinum metals can withstand the high temperatures required for the oxidation reactions that reduce emissions.



Round-Shape Diamond Bezel-Set Band,
Platinum, 32, size 7
Available center stone shapes:



mm Stone	123633 Anniversary		123632 Eternity	
	CTW	Platinum	CTW	Platinum
1.5	1/6	\$1,175	1/4	\$1,595
1.7	1/6	\$1,285	1/3	\$1,649
2.0	1/6	\$1,355	3/8	\$1,925
2.25	1/4	\$1,815	1/2	\$2,375
2.5	1/3	\$2,099	5/8	\$2,735
2.8	1/2	\$2,685	3/4	\$3,235
3.0	5/8	\$3,229	9/10	\$4,099
3.2	3/4	\$3,585	1	\$4,155
3.4	7/8	\$4,435	1 1/4	\$5,399
3.5	9/10	\$5,605	1 1/2	\$6,985



Round-Shape Diamond Bezel-Set Band,
Platinum, 32, size 7
Available center stone shapes:



mm Stone	123635 Anniversary		123634 Eternity	
	CTW	Platinum	CTW	Platinum
1.5	1/6	\$1,425	1/3	\$2,085
1.7	1/6	\$1,435	1/3	\$2,109
2.0	1/3	\$1,785	1/2	\$2,385
2.25	3/8	\$2,269	5/8	\$2,995
2.5	3/8	\$2,199	3/4	\$3,289
2.75	1/2	\$2,719	1	\$4,049
3.0	5/8	\$3,385	1 1/8	\$4,765
3.2	3/4	\$3,745	1 1/4	\$5,219
3.4	9/10	\$4,599	1 1/2	\$6,455
3.5	1	\$5,879	1 3/8	\$7,479



PLATINUM FACT

Platinum is one of the densest elements at 12.4 ounces per cubic inch, a little more than 21 times the density of water or six times the density of a diamond.



Available center stone shapes:

A. **123093** Diamond Anniversary Band, 1/6 CTW, Platinum, 32, size 7, **\$1,545**. Mounting 123093, **\$985**.

D. **123086** Diamond Anniversary Band, 0.05 CTW, Platinum, 32, size 7, **\$1,215**. Mounting 123086, **\$1,179**.

G. **123409** Diamond Anniversary Band, 1/6 CTW, Platinum, 32, size 7, **\$1,465**. Mounting 123409, **\$1,019**.

L. **123441** Diamond Anniversary Band, 1/2 CTW, Platinum, 32, size 7, **\$2,419**. Mounting 123441, **\$1,599**.

A. **123199** Diamond Anniversary Band, 1/6 CTW, Platinum, 32, size 7, **\$1,419**. Mounting 123199, **\$1,265**.

E. **123154** Diamond Anniversary Band, 1/4 CTW, Platinum, 32, size 7, **\$1,545**. Mounting 123154, **\$975**.

J. **123255** Diamond Anniversary Band, 0.08 CTW, Platinum, 32, size 7, **\$1,305**. Mounting 123255, **\$1,299**.

N. **123423** Diamond Anniversary Band, 1/6 CTW, Platinum, 32, size 7, **\$1,145**. Mounting 123423, **\$929**.

B. **123092** Diamond Anniversary Band, 3/8 CTW, Platinum, 21, 32, size 7, **\$1,729**. Mounting 123092, **\$775**.

E. **123020** Diamond Anniversary Band, 1/4 CTW, Platinum, 21, size 7, **\$1,495**. Mounting 123020, **\$775**.

H. **123178** Diamond Anniversary Band, 1/4 CTW, Platinum, 21, size 7, **\$1,475**. Mounting 123178, **\$765**.

M. **122846** Diamond Anniversary Band, 1/2 CTW, Platinum, 21, size 7, **\$2,755**. Mounting 122846, **\$1,335**.

B. **123069** Diamond Anniversary Band, 3/8 CTW, Platinum, 32, size 7, **\$2,175**. Mounting 123069, **\$1,509**.

F. **123106** Diamond Anniversary Band, 1/4 CTW, Platinum, 32, size 7, **\$1,529**. Mounting 123106, **\$1,139**.

K. **123420** Diamond Anniversary Band, 1/3 CTW, Platinum, 32, size 7, **\$1,435**. Mounting 123420, **\$1,165**.

P. **123425** Diamond Anniversary Band, 1/6 CTW, Platinum, 32, size 7, **\$985**. Mounting 123425, **\$955**.

C. **122680** Diamond Anniversary Band, 1/8 CTW, Platinum, 32, size 7, **\$1,349**. Mounting 122680, **\$975**.

F. **123216** Rope Eternity Band, Platinum, size 7, **\$605**.

J. **123320** Diamond Anniversary Band, 0.06 CTW, Platinum, 32, size 7, **\$1,115**. Mounting 123320, **\$975**.

N. **123325** Diamond Anniversary Band, 1/6 CTW, Platinum, 32, size 7, **\$1,499**. Mounting 123325, **\$965**.

C. **123283** Diamond Anniversary Band, 0.04 CTW, Platinum, 32, size 7, **\$1,185**. Mounting 123283, **\$1,079**.

G. **123302** Diamond Anniversary Band, 1/10 CTW, Platinum, 32, size 7, **\$1,465**. Mounting 123302, **\$1,329**.

L. **123626** Diamond Anniversary Band, 1/4 CTW, Platinum, 32, size 7, **\$1,385**. Mounting 123626, **\$659**.

M. **123190** Diamond Anniversary Band, 0.05 CTW, Platinum, 32, size 7, **\$1,115**. Mounting 123190, **\$1,059**.

K. **123294** Diamond Anniversary Band, 1/3 CTW, Platinum, 26, size 7, **\$1,549**. Mounting 123294, **\$735**.

P. **123186** Diamond Anniversary Band, 1/3 CTW, Platinum, 32, 261, size 7, **\$1,975**. Mounting 123186, **\$1,115**.

D. **123263** Diamond Anniversary Band, 1/6 CTW, Platinum, 32, size 7, **\$1,469**. Mounting 123263, **\$1,265**.

H. **123301** Diamond Anniversary Band, 0.03 CTW, Platinum, 32, size 7, **\$935**. Mounting #123301, **\$869**.

M. **123190** Diamond Anniversary Band, 0.05 CTW, Platinum, 32, size 7, **\$1,115**. Mounting 123190, **\$1,059**.

Stuller Melee Diamonds

Available in all qualities, shapes, and colors. Visit Stuller.com/MeleeDiamonds.

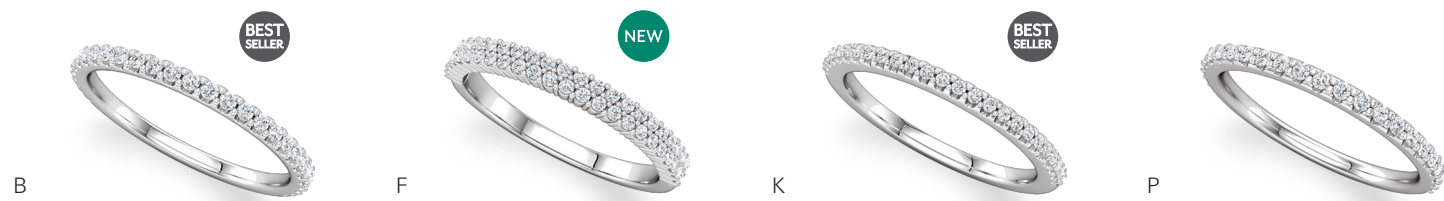


WEDDING FACT
 June is the most popular month for weddings, then August, followed by September and October.

PLATINUM FACT
 Platinum is so rare that all of the platinum ever mined could fit into the average American living room.



Available center stone shapes:



- A. **123123** French-Set Diamond Anniversary Band, 1/8 CTW, Platinum, 32, size 7, **\$1,419**. Mounting 123123, **\$919**.
- B. **123041** Diamond Anniversary Band, 1/4 CTW, Platinum, 32, size 7, **\$1,545**. Mounting 123041, **\$699**.

- C. **123427** French-Set Diamond Anniversary Band, 3/8 CTW, Platinum, 32, size 7, **\$1,895**. Mounting 123427, **\$815**.
- D. **123491** Diamond Anniversary Band, 1/4 CTW, Platinum, 32, size 7, **\$1,409**. Mounting 123491, **\$955**.

- G. **123430** French-Set Diamond Anniversary Band, 1/2 CTW, Platinum, 32, size 7, **\$2,055**. Mounting 123430, **\$905**.
- H. **123419** Diamond Anniversary Band, 1/8 CTW, Platinum, 32, size 7, **\$1,189**. Mounting 123419, **\$679**.

- L. **123223** French-Set Diamond Anniversary Band, 1 CTW, Platinum, 32, size 7, **\$3,755**. Mounting 123223, **\$1,425**.
- M. **123492** Diamond Anniversary Band, 1/4 CTW, Platinum, 32, size 7, **\$1,405**. Mounting 123492, **\$955**.

- A. **51695** Skinny Rope Wedding Band, 1.5mm, Platinum, size 7, **\$415**.
- B. **51579** Sculptural Fancy Wedding Band, 3mm, Platinum, size 7, **\$675**.
- C. **51766** Vintage-Inspired Wedding Band, 3mm, Platinum, size 7, **\$1,119**.
- D. **51808** Geometric Wedding Band, 2mm, Platinum, size 7, **\$765**.

- E. **51788** Infinity Wedding Band, 2.75mm, Platinum, size 7, **\$955**.
- F. **51823** Braided Wedding Band, 2mm, Platinum, size 7, **\$619**.
- G. **51765** Design Engraved Wedding Band, 3.2mm, Platinum, size 7, **\$1,005**.
- H. **51802** Watch Strap Wedding Band, 2mm, Platinum, size 7, **\$1,139**.

- J. **51834** Link Wedding Band, 3mm, Platinum, size 7, **\$879**.
- K. **51792** Floral Wedding Band, 3mm, Platinum, size 7, **\$1,125**.
- L. **51578** Wheat Pattern Wedding Band, 3mm, Platinum, size 7, **\$1,405**.

- M. **51835** Woven Wedding Band, 4.7mm, Platinum, size 7, **\$949**.
- N. **51791** Floral Wedding Band, 3.5mm, Platinum, size 7, **\$1,129**.
- P. **51577** Sculptural Pattern Wedding Band, 4mm, Platinum, size 7, **\$1,689**.

Tired of Setting Melee?
 Our Stone Setting service will help. Visit Stuller.com/StoneSetting.

See all women's and men's platinum bands at Stuller.com/PlatinumBridal.

Forever White, Forever Durable

Seal your forever with platinum's strength and elegance.



- A. IRL Comfort-Fit Light Band, 3mm, Platinum, size 10, **\$959**
- B. 51745 Comfort-Fit Celtic Design Band, 5mm, Platinum, size 10, **\$2,039**
- C. FIR Flat Comfort-Fit Band, 4mm, Platinum, size 10, **\$1,775**
- D. 51538 Flat-Edge Comfort-Fit Milgrain Band with Satin Finish, 6mm, Platinum, size 10, **\$2,525**
- E. 51775 Watch Strap Wedding Band, 6mm, Platinum, size 10, **\$2,249**
- F. 122719 Comfort-Fit Half-Round Diamond Wedding Band, 1/4 CTW, 6mm, Platinum, 32, size 7, **\$3,735**. Mounting 122719, **\$2,979**.

View more at Stuller.com/PlatinumBenefits.

Classic Bands

IR Comfort-Fit Band,
Platinum

mm Width	2	4	5	6
Size 7	\$755	\$1,659	\$2,029	\$2,399
Size 11	\$829	\$1,865	\$2,275	\$2,755

IRL Comfort-Fit Light
Band, Platinum

mm Width	3	4	5	6
Size 7	\$859	\$1,169	\$1,455	\$1,725
Size 11	\$959	\$1,309	\$1,645	\$2,029

HR Half-Round Band,
Platinum

mm Width	2	4	5	6
Size 7	\$875	\$1,229	\$1,965	\$2,395
Size 11	\$955	\$1,355	\$2,155	\$2,585

HRL Half-Round Light
Band, Platinum

mm Width	3	4	5	6
Size 7	\$595	\$839	\$1,339	\$1,605
Size 11	\$659	\$935	\$1,509	\$1,825

Stone Codes: 32 Genuine Round Diamond, SI2-SI3, G-H

Stuller.com/PlatinumBenefits | 21

FIR Flat Comfort-Fit Band, Platinum



mm Width	2	3	5	6
Size 7	\$875	\$1,229	\$1,965	\$2,395
Size 11	\$955	\$1,355	\$2,155	\$2,585

F Flat Band, Platinum



mm Width	2	3	5	6
Size 7	\$595	\$839	\$1,339	\$1,605
Size 11	\$659	\$935	\$1,509	\$1,825

FE Flat-Edge Band, Platinum



mm Width	5	6	7	8
Size 7	\$1,195	\$1,439	\$1,719	\$1,939
Size 11	\$1,365	\$1,615	\$1,929	\$2,159

MGR Milgrain Comfort-Fit Band, Platinum



mm Width	4	5	6	7
Size 7	\$1,585	\$1,949	\$2,325	\$2,775
Size 11	\$1,765	\$2,199	\$2,625	\$2,945

MGRL Milgrain Comfort-Fit Light Band, Platinum



mm Width	4	5	6	8
Size 7	\$1,275	\$1,575	\$1,965	\$2,519
Size 11	\$1,395	\$1,749	\$2,205	\$2,825

MG Milgrain Band, Platinum



mm Width	2.5	4	5	6
Size 7	\$645	\$1,035	\$1,335	\$1,685
Size 11	\$739	\$1,155	\$1,505	\$1,895

DMGR Double Milgrain Comfort-Fit Band, Platinum



mm Width	5	6	7	8
Size 7	\$2,235	\$2,225	\$2,795	\$3,185
Size 11	\$2,485	\$2,535	\$3,125	\$3,535

PLATINUM FACT

Platinum has many uses. Of the 218 tons of platinum sold in 2014, 98 tons were used for vehicle emissions control devices (45%), 74.7 tons for jewelry (34%), 20 tons for chemical production and petroleum refining (9.2%), and 5.85 tons for electrical applications such as

hard disk drives (2.7%). The remaining 28.9 tons went to various other minor applications, such as medicine and biomedicine, glassmaking equipment, investment, electrodes, anticancer drugs, oxygen sensors, spark plugs, and turbine engines.

PLATINUM FACT

Platinum is also used in pacemakers, dental crowns, and other equipment used within the human body because of its resistance to corrosion from bodily fluids and lack of reactivity to bodily functions.

51542 Half-Round Comfort-Fit Band with Hammer Finish, Platinum



mm Width	5	6
Size 7	\$2,565	\$2,805
Size 11	\$2,779	\$3,289

51537 Flat Comfort-Fit Milgrain Band with Hammer Finish, Platinum



mm Width	2	4	5	6
Size 7	\$905	\$1,605	\$1,885	\$2,355
Size 11	\$1,005	\$1,799	\$2,055	\$2,709

122720 Comfort-Fit Knife-Edge Diamond Band, 1/10 CTW, Platinum, 32. Mounting 122720.



mm Width	4	6
Size 7	\$1,979	\$3,109
Size 11	\$2,335	\$3,365

51538 Flat-Edge Comfort-Fit Milgrain Band with Satin Finish, Platinum



mm Width	4	6
Size 7	\$1,435	\$2,189
Size 11	\$1,545	\$2,525

51530 Flat Band with Hammer Finish, Platinum



mm Width	5	6
Size 7	\$1,375	\$1,975
Size 11	\$1,575	\$2,209

122719 Comfort-Fit Double Milgrain Diamond Band, Platinum, 32. Mounting 122719.



mm Width	5	6
CTW	1/6	1/4
Size 7	\$2,725	\$3,315
Size 11	\$3,005	\$3,665



PLATINUM FACT

The scratch factor – All precious metals scratch. However, one of the unique qualities of platinum is that when scratched, the metal is merely displaced, never lost.

- A. **51775** Watch Strap Wedding Band, 6mm, Platinum, size 7, **\$1,999**, size 10, **\$2,249**
- B. **51817** Sculptural Fancy Band with Milgrain, 5mm, Platinum, size 7, **\$1,919**, size 10, **\$2,055**
- C. **51745** Comfort-Fit Celtic Design Band, 5mm, Platinum, size 7, **\$1,815**, size 10, **\$2,039**
- D. **51799** Cross Wedding Band, 7mm, Platinum, size 7, **\$2,689**, size 10, **\$3,025**
- E. **51776** Watch Strap Wedding Band, 6mm, Platinum, size 7, **\$2,505**, size 10, **\$2,795**.
- F. **51777** Sculptural Fancy Band, 7mm, Platinum, size 7, **\$3,215**, size 10, **\$3,615**
- G. **51822** Cross and X-Pattern Wedding Band, 5mm, Platinum, size 7, **\$2,359**, size 10, **\$2,649**
- H. **51811** Wedding Band with Cross, 6mm, Platinum/18K Yellow, size 7, **\$2,305**, size 10, **\$2,579**
- J. **51809** Woven Design Wedding Band, 6mm, Platinum, size 7, **\$2,109**, size 10, **\$2,365**
- K. **51794** Infinity Wedding Band, 6mm, Platinum, size 7, **\$3,485**, size 10, **\$3,609**
- L. **51716** Comfort-Fit X-Pattern Wedding Band, 6mm, Platinum, size 7, **\$2,399**, size 10, **\$2,695**
- M. **51810** Comfort-Fit Woven Design Wedding Band, 6mm, Platinum, size 7, **\$2,109**, size 10, **\$2,365**
- N. **51741** Infinity Wedding Band, 6mm, Platinum, size 7, **\$2,169**, size 10, **\$2,435**
- P. **51735** Comfort-Fit X-Pattern Wedding Band, 6mm, Platinum, size 7, **\$2,455**, size 10, **\$2,755**

See all platinum fancy bands at Stuller.com/PlatinumBridal.

3C

122788 Round-Shape Channel-Set Diamond Wedding Band, Platinum, 32, size 11.

Mounting 122788.
Available center stone shapes:



mm Stone	CTW	Mounting	Set
1.5	0.08	\$2,245	\$3,409
1.7	1/10	\$2,395	\$2,679
1.75	1/8	\$2,435	\$2,755
2.0	1/6	\$2,625	\$2,485
2.25	1/4	\$2,825	\$2,995

3C

122789 Round-Shape Channel-Set Diamond Wedding Band, Platinum, 32, size 11.

Mounting 122789.
Available center stone shapes:



mm Stone	CTW	Mounting	Set
1.0	0.04	\$2,405	\$2,585
1.2	0.05	\$2,445	\$2,675
1.3	0.07	\$2,465	\$2,725
1.5	0.08	\$2,525	\$2,765
1.7	1/10	\$2,565	\$2,855
1.75	1/10	\$2,575	\$2,895
2.0	1/6	\$2,625	\$2,995

3C

123133 Square-Shape Channel-Set Diamond Wedding Band, Platinum, 35, size 11.

Mounting 123133.
Available center stone shapes:



mm Stone	CTW	Mounting	Set
1.25x1.25	1/6	\$1,589	\$2,665
1.5x1.5	3/8	\$1,695	\$2,989
1.75x1.75	1/2	\$1,769	\$3,249
2x2	5/8	\$1,975	\$3,825
2.25x2.25	3/4	\$2,315	\$4,395
2.5x2.5	1	\$2,619	\$5,505
2.75x2.75	1	\$3,035	\$5,639
3x3	1 1/2	\$3,389	\$7,379
3.25x3.25	2	\$3,765	\$9,009
3.5x3.5	1 3/4	\$4,359	\$11,079

3C

123307 Round-Shape Channel Set Diamond Wedding Band, Platinum, 32, size 11.

Mounting 123307.
Available center stone shapes:

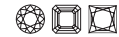


mm Stone	CTW	Mounting	Set
1.7	3/8	\$3,045	\$4,235
1.75	3/8	\$3,145	\$4,485
2.0	1/2	\$3,709	\$5,055
2.25	3/4	\$4,295	\$6,335
2.5	1	\$4,959	\$7,159
2.8	1 1/6	\$5,649	\$8,715
3.0	1 3/8	\$6,385	\$10,045

3C

122785 Round-Shape Channel-Set Diamond Wedding Band, Platinum, 32, size 11.

Mounting 122785.
Available center stone shapes:

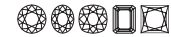


mm Stone	CTW	Mounting	Set
2.0	1/6	\$2,709	\$3,079
2.25	1/6	\$2,889	\$3,475
2.5	1/3	\$3,075	\$3,775
2.75	1/3	\$3,255	\$4,295
3.0	1/2	\$3,445	\$4,765
3.2	5/8	\$3,595	\$5,109
3.4	3/4	\$3,745	\$5,929
3.5	3/4	\$3,825	\$7,075
3.75	1	\$4,019	\$7,875
3.8	1 1/6	\$4,055	\$7,909

3C

123291 Round-Shape Diamond Wedding Band, 1/3 CTW, Platinum, 32, size 11.

Mounting 123291.
Available center stone shapes:

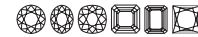


mm Stone	CTW	Mounting	Set
2.5	1/3	\$4,109	\$4,799
2.8	3/8	\$4,119	\$5,145
3.0	1/2	\$4,125	\$5,435
3.2	5/8	\$4,125	\$5,629
3.4	3/4	\$4,119	\$6,285
3.5	3/4	\$4,119	\$7,355
3.8	1 1/6	\$4,099	\$7,935
4.1	1 1/4	\$4,355	\$9,929
4.4	1 5/6	\$4,655	\$12,339
4.8	2	\$5,069	\$18,939

3C

123478 Round-Shape Bezel-Set Diamond Wedding Band, Platinum, 32, size 11.

Mounting 123478.
Available center stone shapes:

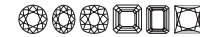


mm Stone	CTW	Mounting	Set
1.75	0.025	\$4,695	\$4,785
2.0	0.03	\$4,679	\$4,789
2.25	0.04	\$4,689	\$4,845
2.5	0.06	\$4,769	\$4,909
2.8	0.08	\$4,899	\$4,949
3.0	1/10	\$4,899	\$5,189
3.2	1/6	\$5,055	\$5,385
3.4	1/6	\$5,195	\$5,659
3.8	1/6	\$5,535	\$6,335
4.1	1/4	\$5,785	\$6,949

3C

123522 Round-Shape Channel Set Diamond Wedding Band, Platinum, 32, size 11.

Mounting 123522.
Available center stone shapes:



mm Stone	CTW	Mounting	Set
1.75	0.06	\$3,239	\$3,439
2.0	1/10	\$3,575	\$3,805
2.25	1/6	\$3,939	\$4,299
2.5	1/6	\$4,309	\$4,739
2.8	1/4	\$4,645	\$5,275
3.0	1/3	\$5,029	\$5,829
3.2	1/3	\$5,335	\$6,255
3.4	1/2	\$5,615	\$6,935
3.8	5/6	\$6,209	\$8,529
4.1	3/4	\$6,699	\$10,129

PLATINUM FACT

In 1795, France created the metric system. They used platinum for the standard measures because platinum does not lose weight and would not corrupt the standard.

ENGRAVING OPTIONS

Engraving truly personalizes a wedding band. Customers can choose names, dates, phrases (up to 74 characters), and symbols. We offer eight fonts and a handwritten option.

- Bookman
- Colonna MT
- Corinthia
- Edwardian Script
- Lucida Handwriting
- Old English
- Script MT
- Typewriter
- Your own handwritten message

Choose from the following colors:

- BLACK
- BLUE
- PINK
- BROWN
- GREEN
- RED

Fill colors available with laser engraving and handwritten engraving only. Not applicable on all materials.

Exquisite Adornments

Capture every detail, secure each stone, and treasure the feel of platinum.



- A. **R42309** Diamond Cross Pendant, ¼ CTW, 10.2x7.8mm, Platinum, 33, **\$695**. Mounting R42309, **\$245**. Shown with CH1015.
- B. **86729** Diamond Bar Necklace, ½ CTW, 11.3x2.8mm, Platinum, 21, 32, 16"-18", **\$1,715**. Mounting 86729, **\$625**.
- C. **86666** Horn Necklace, 23.3x7.1mm, Platinum, 16"x18", **\$799**.
- D. **86458** Diamond Halo-Style Earrings, 1½ CTW, 5mm, Platinum, 33, **\$2,185**. Mounting 86458, **\$335** each.
- E. **71606** Chatham® Created Blue Sapphire and Diamond Halo-Style Ring, 8x6mm, ¾ CTW, Platinum, 67, 33, **\$3,159**. Mounting 71606, **\$1,189**.
- F. **123520** Diamond Cluster Ring, ¼ CTW, 3.4mm, Platinum, 32, **\$1,015**. Mounting 123520, **\$909**.
- G. **86502** Beaded Earrings, 10.4mm, Platinum, **\$875**.

View more at Stuller.com/PlatinumBenefits.

Stackable Rings



- G. **71994** Genuine Ruby V Ring, 3mm, Platinum, 66, **\$1,205**. Mounting 71994, **\$1,175**.
- 123475** Diamond V Ring, ⅓ CTW, Platinum, 32, **\$1,585**. Mounting 123475, **\$1,295**.
- 51730** Beaded V Ring, 6.9mm width, Platinum, **\$615**.
- H. **51827** Crown Ring, 4.4mm width, Platinum, **\$719**.
- 71974** Genuine Emerald and Diamond Ring, 3mm, .06 CTW, Platinum, 51, 32, **\$2,905**. Mounting 71974, **\$1,239**.
- 123434** Diamond Clover Ring, ⅓ CTW, Platinum, 32, **\$1,985**. Mounting 123424, **\$1,325**.
- J. **51807** Twisted Beaded Ring, 2.6mm width, Platinum, **\$785**.
- 71973** Genuine Pink Sapphire and Diamond Ring, 5x3mm, ⅓ CTW, Platinum, 70, 32, **\$1,765**. Mounting 71973, **\$885**.
- 123288** Diamond Ring, ⅓ CTW, Platinum, 32, **\$1,009**. Mounting 123288, **\$819**.
- K. **72005** Diamond Bar Ring, ¼ CTW, Platinum, 32, **\$1,645**. Mounting 72005, **\$1,095**.
- 51832** Beaded Bar Ring, 3.2mm width, Platinum, **\$965**.
- 72005** Genuine Aquamarine Bar Ring, 2mm, Platinum, 45, **\$1,215**. Mounting 72005, **\$1,095**.
- L. **123507** Diamond Two-Stone Ring, ¼ CTW, Platinum, 21, **\$1,885**. Mounting 123507, **\$1,025**.
- 51734** Twisted Ring, 3mm width, Platinum, **\$859**.
- 71988** Genuine Peridot and Diamond Ring, 6x4mm, ⅓ CTW, Platinum, 61, 32, **\$1,359**. Mounting 71988, **\$865**.
- M. **71991** Genuine Blue Sapphire Beaded Ring, 2.5mm, Platinum, 67, **\$1,239**. Mounting 71991, **\$979**.
- 123298** Diamond Asymmetrical Ring, ⅓ CTW, Platinum, 32, **\$1,385**. Mounting 123298, **\$915**.
- 51608** Beaded Ring, 2mm width, Platinum, **\$425**.

Stone Codes: **21** Genuine Straight Baguette Diamond, SI2-SI3, G-I | **32** Genuine Round Diamond, SI2-SI3, G-H
33 Genuine Round Diamond, I1, G-H | **45** Genuine Aquamarine, AA, Heat Treated | **61** Genuine Peridot, AA, Natural
66 Genuine Ruby, AA, Heat Treated | **67** Genuine Blue Sapphire, AA, Heat Treated | **70** Genuine Pink Sapphire, AA, Heat Treated



123339 Diamond Negative Space Ring, ¼ CTW, Platinum, 32, **\$1,389**. Mounting 123339, **\$825**.

71969 Genuine Opal and Diamond Stackable Ring, 3.0mm, ½ CTW, Platinum, 158, 32, **\$1,419**. Mounting 71969, **\$1,125**.

51703 Infinity Stackable Ring, 3.5mm width, Platinum, **\$769**.



6506 White Freshwater Cultured Pearl and Diamond Stackable Ring, 4.0-4.5mm, .05 CTW, Platinum, 16, 33, **\$865**. Mounting 6506, **\$795**.

51760 Negative Space Ring, 5.4mm width, Platinum, **\$979**.

123338 Diamond Asymmetrical Stackable Geometric Ring, ½ CTW, Platinum, 117, **\$1,415**. Mounting 123338, **\$1,075**.



51821 Geometric Stackable Ring, 6.6mm width, Platinum, **\$745**.

123210 Diamond Stackable Ring, .04 CTW, 2mm, Platinum, 32, **\$989**. Mounting 123210, **\$745**.

71972 Genuine Pink Sapphire Crown Ring, 2mm stone, Platinum, 70, **\$1,475**. Mounting 71972, **\$1,115**.



71968 Genuine Blue Sapphire and Diamond Negative Space Ring, 6x4mm, ¼ CTW, 8.6mm, Platinum, 67, 32, **\$2,689**. Mounting 71968, **\$1,855**.



123566 Diamond Beaded Negative Space Ring, ¼ CTW, 32, **\$2,475**. Mounting 123566, **\$1,975**.



71930 Genuine Emerald and Diamond Ring, 3.5mm, .05 CTW, 7.5mm, Platinum, 51, 32, **\$2,349**. Mounting 71930, **\$2,155**.



51820 Crescent Shape Ring, 8.9mm width, Platinum, **\$765**.



123370 Diamond Bypass Ring, ¼ CTW, Platinum, 32, **\$2,945**. Mounting 123370, **\$1,089**.



51785 Freeform Bypass Ring, 10mm width, Platinum, **\$379**.



123515 Diamond Freeform Ring, ½ CTW, Platinum, 32, **\$1,715**. Mounting 123515, **\$1,419**.



6509 White Freshwater Cultured Pearl Two-Stone Ring, 4.0-4.5mm Pearls, 10.2mm, Platinum, 16, **\$1,265**. Mounting 6509, **\$1,219**.



72009 Genuine Pink Sapphire and Diamond Ring, 5x3mm, ½ CTW, Platinum, 70, 32, **\$1,505**. Mounting 72009, **\$969**.



71990 Genuine Blue Sapphire and Aquamarine Two-Stone Ring, 6x4mm, 4x4mm, Platinum, 67, 45, **\$2,439**. Mounting 71990, **\$1,419**.



71982 Genuine Peridot and White Sapphire Two-Stone Ring, 5x3mm, 4.0mm, Platinum, 61, 337, **\$1,209**. Mounting 71982, **\$1,055**.



71996 Genuine Amethyst Three-Stone Ring, 2.5mm, Platinum, 43, **\$1,045**. Mounting 71996, **\$875**.



51815 Freeform Bypass Ring, 12.6mm width, Platinum, **\$2,139**.



123509 Diamond Two-Stone Ring, ½ CTW, Platinum, 32, **\$2,645**. Mounting 123509, **\$2,415**.



71986 Genuine Blue Sapphire and Diamond Ring, 6x4mm, ¼ CTW, Platinum, 67, 32, **\$2,859**. Mounting 71986, **\$1,735**.



51813 Criss-Cross Ring, 6.4mm width, Platinum, **\$1,279**.

PLATINUM FACT

Virtually all famous gemstones from the Star of Africa to the Hope Diamond are protected by platinum settings.



51643 Negative Space Ring, 11.3mm width, Platinum, **\$1,505**.



71884 Genuine Tanzanite Ring, 4x2mm, 9mm, Platinum, 156, **\$2,535**. Mounting, 71884, **\$2,335**.



123518 Diamond Negative Space Ring, .04 CTW, Platinum, 32, **\$2,189**. Mounting 123518, **\$1,989**.



51673 Negative Space Ring, 11mm width, Platinum, **\$1,799**.



66233 Diamond Cocktail-Style Stud Earrings, Platinum, SI2-SI3, 32 Mounting 23578.

CTW	¼	½	¾	1	1½	2
Stone mm	3.0	4.0	4.5	5.0	6.0	6.5
SI2-SI3, G-H, AGTA	\$695	\$1,885	\$3,889	\$6,819	\$11,915	\$23,395



1874 Diamond Basket-Style Stud Earrings, Platinum, SI2-SI3, G-H, N, 32. Mounting 1874.

CTW	¼	½	¾	1	1½	2
Stone mm	3.0	4.0	4.5	5.0	6.0	6.5
SI2-SI3, G-H, N	\$729	\$1,925	\$3,935	\$6,845	\$11,935	\$23,399



LG

652481 Lab-Grown Diamond Cocktail-Style Stud Earrings, Platinum, VS-SI, 618.

CTW	¼	½	¾	1	1½	2
Stone mm	3.5	4.0	4.5	5.0	6.0	6.5
VS-SI, G-I, HPHT	\$739	\$1,225	\$2,035	\$3,885	\$7,129	\$15,829



LG

652480 Lab-Grown Diamond Basket-Style Stud Earrings, Platinum, VS-SI, 618.

CTW	¼	½	¾	1	1½	2
Stone mm	3.5	4.0	4.5	5.0	6.0	6.5
VS-SI	\$755	\$1,245	\$2,065	\$3,909	\$7,145	\$15,839

BEST SELLER

20007 Hoop Earrings, Platinum, 3mm



11.5mm, **\$699**



14.0mm, **\$895**



17.5mm, **\$1,589**

**PLATINUM
FACT**

Platinum is used in several anticancer drugs because of its very low reactivity levels. About 50% of cancer therapy patients currently use platinum-containing drugs.

BEST SELLER

650183 Diamond Inside-Outside Hoop Earrings, Platinum, SI, H+, 544



¼ CTW
14.4x1.3mm, **\$1,595**



½ CTW
18.9x1.4mm, **\$2,225**



¾ CTW
23.0x1.5mm, **\$3,055**



1 CTW
26.6x1.9mm, **\$3,809**



2 CTW
29.3x2.1mm, **\$7,245**



NEW

86650 Vintage-Inspired Hoop Earrings, 16x2.7mm, Platinum, **\$1,649 per pair.**



NEW

86731 Vintage-Inspired Hoop Earrings, 20x1.8mm, Platinum, **\$1,775 per pair**



86450 Rope Hoop Earrings, 17x3.6mm, Platinum, **\$899 per pair**



86424 Beaded Hoop Earrings, 18x3mm, Platinum, **\$1,605 per pair**



86455 Diamond Hoop Earrings, 1/10 CTW, 11.22.3 mm, Platinum, 32, **\$1,205 per pair.** Mounting 86455, **\$519 each.**



86685 Diamond Beaded Hoop Earrings, 1/5 CTW, 12.3x2mm, Platinum, 32, **\$2,045 per pair.** Mounting 86685, **\$455 each.**



86493 Genuine Ruby Hoop Earrings, 2.5mm, 12.3x3.9mm, Platinum, 66, **\$2,295 per pair.** Mounting 86493, **\$555 each.**



86563 Chatham® Created Blue Sapphire Hoop Earrings, 2.5x2.5mm, 14.1x3.6mm, Platinum, 7, **\$1,755 per pair.** Mounting 86563, **\$829 each.**



86760 Diamond Circle Earrings, 1/10 CTW, 8.4mm, Platinum, 32, **\$879 per pair**. Mounting 86760, **\$365 each**.



86752 Diamond Geometric Cluster Earrings, 1/6 CTW, 5.7x5.3mm, Platinum, 32, **\$1,125 per pair**. Mounting 86752, **\$325 each**.



86777 Genuine Peridot and Diamond Earrings, 5.0mm, 1/6 CTW, 10x9.8mm, Platinum, 61, 32, **\$1,679 per pair**. Mounting 86777, **\$675 each**.



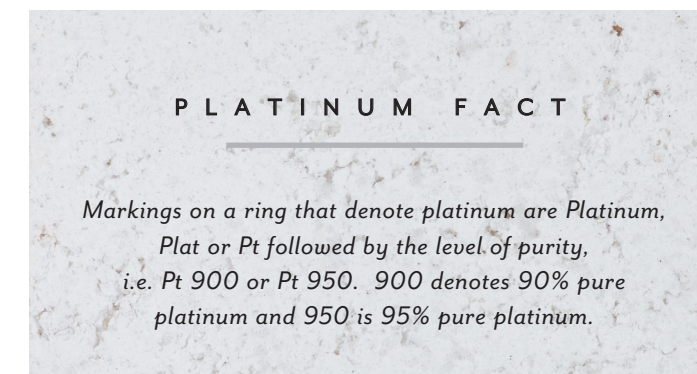
86757 Star Earrings, 9.7x9.2mm, Platinum, **\$375 per pair**



86699 Freeform J-Hoop Earrings, 13.3x9.1mm, Platinum, **\$905 per pair**



86732 Vintage-Inspired J-Hoop Earrings, 14.5x7.2mm, Platinum, **\$1,335 per pair**



86687 Diamond Domed Earrings, 1/6 CTW, 4.8mm Platinum, 32, **\$705 per pair**. Mounting 86687, **\$245 each**.



86719 White Freshwater Cultured Pearl and Diamond Earrings, 6.0-6.5mm Pearl, 1/4 CTW, 11.1x5.4mm, Platinum, 16, 32, **\$2,819 per pair**. Mounting 86719 **\$455 each**.



86682 Infinity Rope Earrings, 9.5x4.4mm, Platinum, **\$339 per pair**



86688 Diamond Circle Earrings, 0.06 CTW, 7.3mm, Platinum, 32, **\$615 per pair**. Mounting 86688, **\$275 each**.



86792 Geometric Hoop Earrings, 12.6x1.7mm, Platinum, **\$1,055 per pair**



86492 Diamond Hoop Earrings, 1/6 CTW, 11x4.3mm, Platinum, 32, **\$1,459 per pair**. Mounting 86492, **\$495 each**.



86686 Genuine Aquamarine and Diamond J-Hoop Earrings, 3mm, 1/6 CTW, 14.3x1.4mm, Platinum, 45, 32, **\$1,229 per pair**. Mounting 86686, **\$339**.



86776 Diamond J-Hoop Earrings, .06 CTW, 11.4x2.6mm, Platinum, 32, **\$655 per pair**. Mounting 86776, **\$309**.



86646 Petite Beaded Ear Climbers, 8.3x1.9mm, Platinum, **\$345 per pair**



86691 Diamond Petite Ear Climbers, .07 CTW, 7.6x4.8mm, Platinum, 32, **\$799 per pair**. Mounting 86691, **\$265 each**.



86701 Genuine Blue Sapphire Petite Ear Climbers, 11.1x4.4mm, Platinum, 67, **\$1,365 per pair**. Mounting 86701 **\$429 each**.



86788 Diamond Geometric Ear Climbers, 0.07 CTW, 15x6.2mm, Platinum, 32, **\$865 per pair**. Mounting 86788, **\$385**.



86761 Triangle Earrings, 12x3.2mm, Platinum, **\$309 per pair**.



86765 Multi-Stone Earrings, .07 CTW, 9.4x5.9mm, Platinum, 67, 45, 46, 26, **\$1,895 per pair**. Mounting 86765, **\$305**.



86447 Petite Leaf Ear Climbers, 16.4x5.7mm, Platinum, **\$615 per pair**.



86738 Diamond Ear Climbers, 3/8 CTW, 12.9x4.5mm, Platinum, 32, **\$1,255 per pair**. Mounting 86738, **\$395**.



86756 Diamond Bar Earrings, 3/4 CTW, 9x3.4mm, Platinum, 21, **\$4,089 per pair**. Mounting 86756, **\$395 each**.



86759 Triangle Bar Earrings, 9.3x2.4mm, Platinum, **\$419 per pair**



86730 Diamond Bar Earrings, 0.07 CTW, 16.9x1.9mm, Platinum, 32, **\$1,025 per pair**. Mounting 86730, **\$429 each**.



86791 Vintage-Inspired Earrings, 29x2.4mm, Platinum, **\$659 per pair**



86498 Beaded Ear Climbers, 14.7x1.8mm, Platinum, **\$419 per pair**.



86521 Diamond Ear Climbers, 1/6 CTW, 17.8x3.8mm, Platinum, 32, **\$865 per pair**. Mounting 86521, **\$305 each**.



86483 Wavy Ear Climbers, 18.8x3.3mm, Platinum, **\$339 per pair**.



86371 Diamond Ear Climbers, 1/6 CTW, 18.5x2.3mm, Platinum, 32, **\$865 per pair**. Mounting 86371, **\$259**.

PLATINUM FACT

A high abundance of platinum is present in meteorites, as well as the moon.



NEW

86703 Scroll Bar Necklace, 27.5x1.9mm, Platinum, 16"-18", **\$1,035**.



NEW

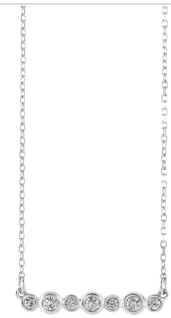
86773 Diamond Bar Necklace, 1/8 CTW, 23.1x4.4mm, Platinum, 32, 16"-18", **\$1,445**. Mounting 86773, **\$985**.



NEW

86433 Diamond Leaf Necklace, 1/8 CTW, 26.5x4.7mm, Platinum, 32, 16"-18", **\$1,685**. Mounting 86433, **\$995**.

86734 Freeform Necklace, 20x7.4mm, Platinum, 16"-18", **\$919**.



NEW

86706 Diamond Bar Necklace, 1/8 CTW, 20.4x3.4mm, Platinum, 32, 16"-18", **\$1,439**.



NEW

86790 Genuine Blue Sapphire and Diamond Necklace, 4x2mm, 1/8 CTW, 31.7x3.5mm, Platinum, 67, 32, 16"-18", **\$2,069**. Mounting 86790, **\$985**.



NEW

86783 V-Shape Necklace, 21.5x18mm, Platinum, 16"-18", **\$1,015**.



NEW

86787 Diamond V-Shape Necklace, 0.03 CTW, 25.2x11.7mm, Platinum, 32, 16"-18", **\$1,149**. Mounting 86787, **\$1050**.



86616 Graduated Diamond V-Shape Necklace, 1/3 CTW, 15.9x9.2mm, Platinum, 32, 16"-18", **\$1,599**. Mounting 86616, **\$759**.



86607 Crescent Necklace, 10.8x4.8mm, Platinum, 16"-18", **\$675**.



86624 Diamond Crescent Necklace, .03 CTW, 12x12mm, Platinum, 32, 16"-18", **\$1,039**.



86692 Diamond Moon Necklace, 1/3 CTW, 19.5x15mm, Platinum, 32, 16"-18", **\$2,425**. Mounting 86692, **\$809**.



NEW

86764 Milgrain Sun Necklace, 15mm, Platinum, 16"-18", **\$1,019**.



NEW

86742 Interlocking Circle Necklace, 20x14mm, Platinum, 16"-18", **\$1,005**.



NEW

86708 Diamond Circle Necklace, 1/4 CTW, 18mm, Platinum, 32, 16"-18", **\$2,349**. Mounting 86708, **\$1,649**.



NEW

86750 Chatham® Created Ruby and Diamond Bar Necklace, 6x4mm, .04 CTW, 11.6x5.4mm, Platinum, 6, 32, **\$1,165**. Mounting 86750, **\$725**.



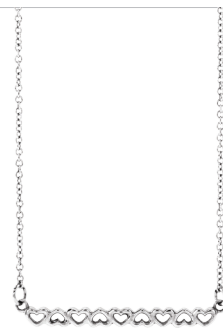
NEW

86770 Curved Bar Necklace, 24.3x6.3mm, Platinum, 16"-18", **\$1,065**.



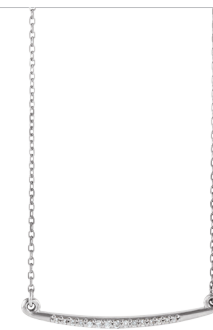
NEW

86793 Genuine Emerald and Diamond Two-Stone Necklace, 3.0mm, .02 CTW, Platinum, 51, 32, 18", **\$1,095**. Mounting 86793, **\$785**.



NEW

86769 Heart Bar Necklace, 28.3x3.7mm, Platinum, 16"-18", **\$765**.



NEW

86681 Diamond Curved Bar Necklace, 0.05 CTW, 26.5x3mm, Platinum, 32, 16"-18", **\$1,055**.



NEW

86715 White Freshwater Cultured Pearl and Diamond Bar Necklace, 3.0mm, 0.06 CTW, 24.1x2mm, Platinum, 16, 32, 16"-18", **\$1,445**. Mounting 86715, **\$805**.

NEW

71975 Family Ring Mounting with Accents, Platinum.
Available with 1-5 stones.



1- 2.5mm, 2- 1.3mm, **\$1,025**
Semi-Set, 0.02 CTW, 32, **\$1,129.**



2- 2.5mm, 3- 1.3mm, **\$1,035**
Semi-Set, 0.025 CTW, 32, **\$1,189.**



3- 2.5mm, 4- 1.3mm, **\$1,045**
Semi-Set, 0.03 CTW, 32, **\$1,245.**



4- 2.5mm, 5- 1.3mm, **\$1,055**
Semi-Set, 0.04 CTW, 32, **\$1,309.**

NEW

71971 Family Ring Mounting with Accents, Platinum.
Available with 1-5 stones.



1- 2.5mm, 23- 1.3mm, **\$1,025**
Semi-Set, 1/6 CTW, 32, **\$1,735.**



2- 2.5mm, 23- 1.3mm, **\$1,105**
Semi-Set, 1/6 CTW, 32, **\$1,809.**



3- 2.5mm, 23- 1.3mm, **\$1,185**
Semi-Set, 1/6 CTW, 32, **\$1,885.**



5- 2.5mm, 23- 1.3mm, **\$1,335**
Semi-Set, 1/6 CTW, 32, **\$2,025.**

71905 Family Ring Mounting with Accents, Platinum.
Available with 1-5 stones.



1- 3.0mm, 16- 1.1mm, **\$1,815**
Semi-Set, 0.08 CTW, 32, **\$2,039.**



2- 3.0mm, 16- 1.1mm, **\$1,869**
Semi-Set, 0.08 CTW, 32, **\$2,089.**



3- 3.0mm, 16- 1.1mm, **\$1,935**
Semi-Set, 0.08 CTW, 32, **\$2,155.**



4- 3.0mm, 16- 1.1mm, **\$1,989**
Semi-Set, 0.08 CTW, 32, **\$2,209.**

71904 Family Ring Mounting with Accents, Platinum.
Available with 1-5 stones.



1- 3.0mm, 9- 1.2mm, **\$3,315**
Semi-Set, 0.07 CTW, 32, **\$3,525.**



2- 3.0mm, 9- 1.2mm, **\$3,355**
Semi-Set, 0.07 CTW, 32, **\$3,565.**



3- 3.0mm, 9- 1.2mm, **\$3,389**
Semi-Set, 0.07 CTW, 32, **\$3,595.**



4- 3.0mm, 9- 1.2mm, **\$3,425**
Semi-Set, 0.07 CTW, 32, **\$3,629.**



R42355 Diamond Sideways Cross Necklace,
.03 CTW, 14.3x6.6mm Platinum, 32,
16"-18", **\$775.** Mounting R42355, **\$675.**



86620 Sideways Cross Necklace,
17.2x10.8mm, Platinum, 16"-18", **\$715.**



NEW

R45397 Petite Cross Necklace, 12x8.7mm,
Platinum, 16"-18", **\$695.**



NEW

R42359 Diamond Cross Necklace, 1/6 CTW,
8.7x6.6mm, Platinum, 32, 16"-18", **\$1,055.**
Pendant Mounting R42359, **\$205.**



R42358 Diamond Cross Pendant, 1/10 CTW,
19.8x14.5mm, Platinum, 32, **\$689.**
Mounting R42358, **\$599.** Shown with CH132.

NEW

R43075 Diamond Cross Ring,
0.03 CTW, 2mm, Platinum, 32,
\$959. Mounting R43075, **\$735.**

NEW

R43084 Diamond Stackable
Cross Ring, 0.03 CTW, 6.9mm,
Platinum, **\$905.** Mounting R43084, **\$859.**

NEW

R43067 Diamond Sideways Cross
Ring, 1/10 CTW, 11mm, Platinum,
32, **\$1,485.** Mounting R43067, **\$1,225.**

R43076 Open Cross Ring,
9.9mm, Platinum, **\$759.**



R17013 Diamond Cross Earrings,
0.06 CTW, 7.6x5.7mm,
Platinum, 32, **\$535 per pair.**
Mounting R17013, **\$189 each.**



NEW

R17015 Open Cross Earrings,
10x7mm, Platinum, **\$435 per pair.**



NEW

R17017 Heart and Cross Earrings,
8mm, Platinum, **\$525 per pair.**



NEW

R17016 Pierced Cross Earrings,
8mm, Platinum, **\$319 per pair.**

S STULLER

P
PLATINUM

Front cover, from top: **86710** Genuine Emerald and Diamond Pendant, 6mm, $\frac{1}{10}$ CTW, 13.5x5.7mm, Platinum, 50, 26, **\$4,129**. Mounting 86710 **\$355**. **86766** Leaf Necklace, 16x9mm, Platinum, 16"-18", **\$1,245**, Made with CH132. | **123447** Round-Shape French-Set Semi-Set Engagement Ring, 1 CT Center (6.5mm), 1 CTW, Platinum, 32, size 7, **\$7,765**. Mounting 123447, **\$1,205**. | **123626** Diamond Anniversary Band, $\frac{1}{4}$ CTW, Platinum, 32, size 7, **\$1,385**. Mounting 123626, **\$659**. | **MGR10** Milgrain Comfort-Fit Band, 6mm, Platinum, size 10, **\$2,625**. | **1874** Diamond Basket-Style Stud Earrings, 1 CTW, Platinum, SI1-SI2, G-H, N, 32, **\$6,945**. Mounting 1874, **\$115 each**.

Below, from top: **123506** Diamond Stackable Ring, $\frac{1}{8}$ CTW, Platinum, 21, 33, **\$1,709**. Mounting 123506, **\$895**. **51788** Infinity Wedding Band, 2.75mm, Platinum, size 7, **\$955**. | **123594** Round-Shape Bezel-Set Diamond Anniversary Band, $\frac{3}{8}$ CTW, Platinum, 32, size 7, **\$2,425**. Mounting 123594, **\$1,385**. | **51765** Design Engraved Wedding Band, 3.2mm, Platinum, size 7, **\$1,005**.



All prices are suggested retail based on \$1,300 gold and \$1,100 platinum and are subject to change without notice. Items shown larger than actual size. | Visit Stuller.com for complete product selections, current pricing, and availability.

10/2017 MKTG MEDIA:9908