



A

B

C

Bracelets and Brooches

850 Line

859 Trim

860 Bangles

864 Slides

866 Brooches

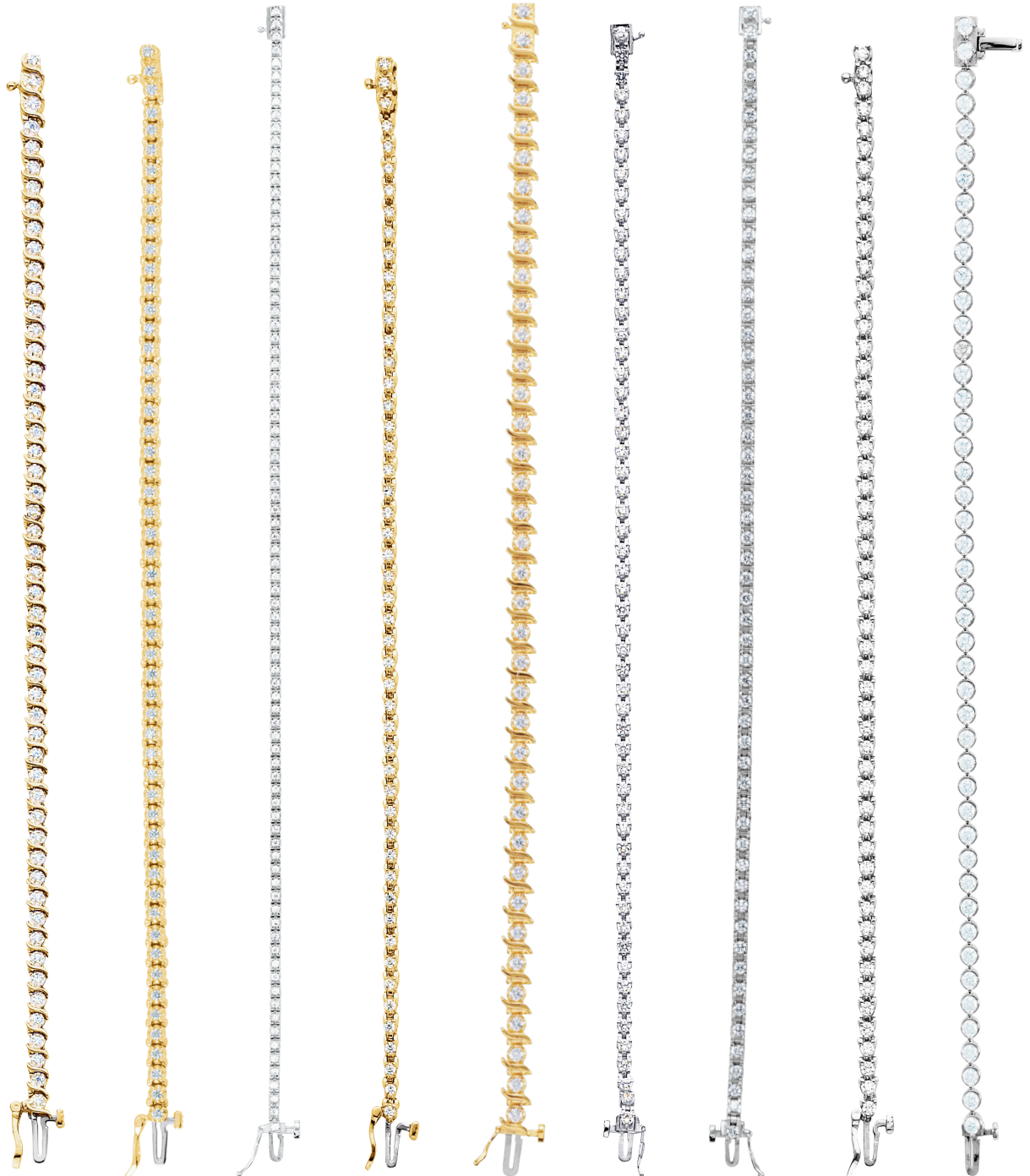
3C[™]

CHOOSE
CHANGE
CREATE

*Shown left to right: A. BRC699, B. BRC6, C. BRC389, and D. BRC0440
For product information, visit stuller.com.*



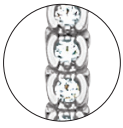
LINE BRACELETS: 1-2 ct tw



BRC61	BRC67	BRC435	BRC95	BRC436	BRC17	BRC437	BRC96	BRC656
14kt	14kt	14kt	14kt	14kt	14kt	14kt	14kt	14kt
1 ct tw	1 ct tw	1 ct tw	1 ct tw	1½ ct tw	1¼ ct tw	2 ct tw	2 ct tw	2 ct tw
(52- 1.3), 7"	(54- 1.7), 7"	(85- 1.4), 7¼"	(50- 1.7), 7"	(38- 2.2), 7¼"	(56- 2.0), 7"	(56- 2.1), 7¼"	(54- 2.2), 7"	(50- 2.2), 7¼"
\$1,289	\$1,355	\$1,369	\$1,195	\$2,815	\$1,465	\$1,779	\$1,335	\$1,439
6.14 dwt	6.75 dwt	4.84 dwt	5.67 dwt	10.66 dwt	5.23 dwt	6.48 dwt	6.33 dwt	5.12 dwt
		FJ #67410		FJ #67411		FJ #67397		

850 | Dimensions and stones given in millimeters. Stones sold separately.

LINE BRACELETS: 2-3½ ct tw



BRC159

14kt
2 ct tw
(50- 2.2), 7"
\$1,985
9.57 dwt

BRC438

14kt
2 ct tw
(33- 2.5), 7¼"
\$2,599
9.78 dwt
FJ #67400

BRC318

14kt
2½ ct tw
(64- 2.2), 7"
\$1,509
7.20 dwt

BRC112

14kt
3 ct tw
(38- 2.8), 7"
\$2,145
10.57 dwt

BRC660

14kt
3 ct tw
(49- 2.5), 7¼"
\$2,845
10.76 dwt

BRC317

14kt
3 ct tw
(52- 2.5), 7"
\$1,765
8.36 dwt

BRC440

14kt
3 ct tw
(63- 2.4), 7¼"
\$2,009
7.41 dwt
FJ #67412

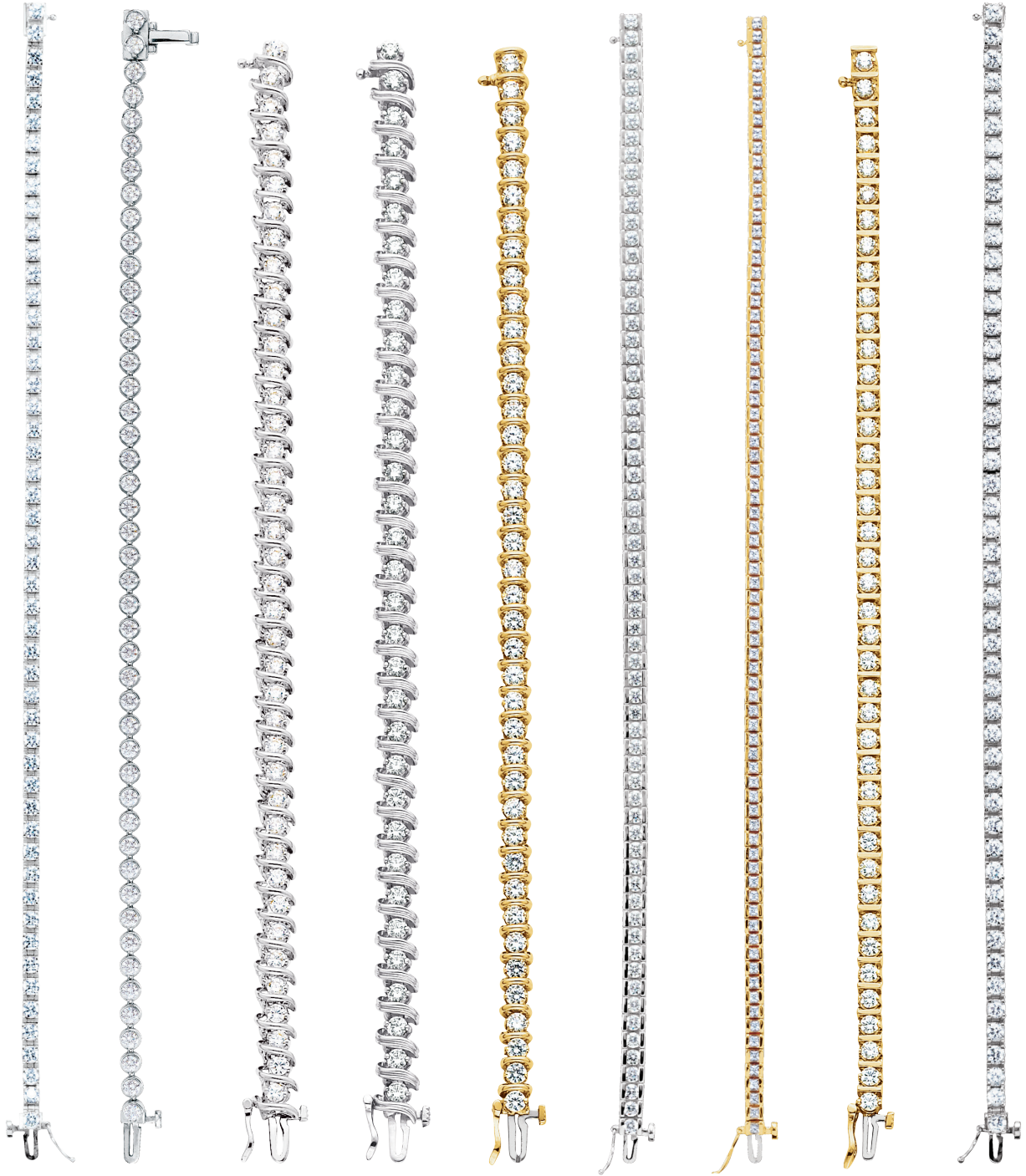
BRC153

14kt
3½ ct tw
(42- 2.8), 7"
\$2,185
10.79 dwt

Most items available in any metal quality.

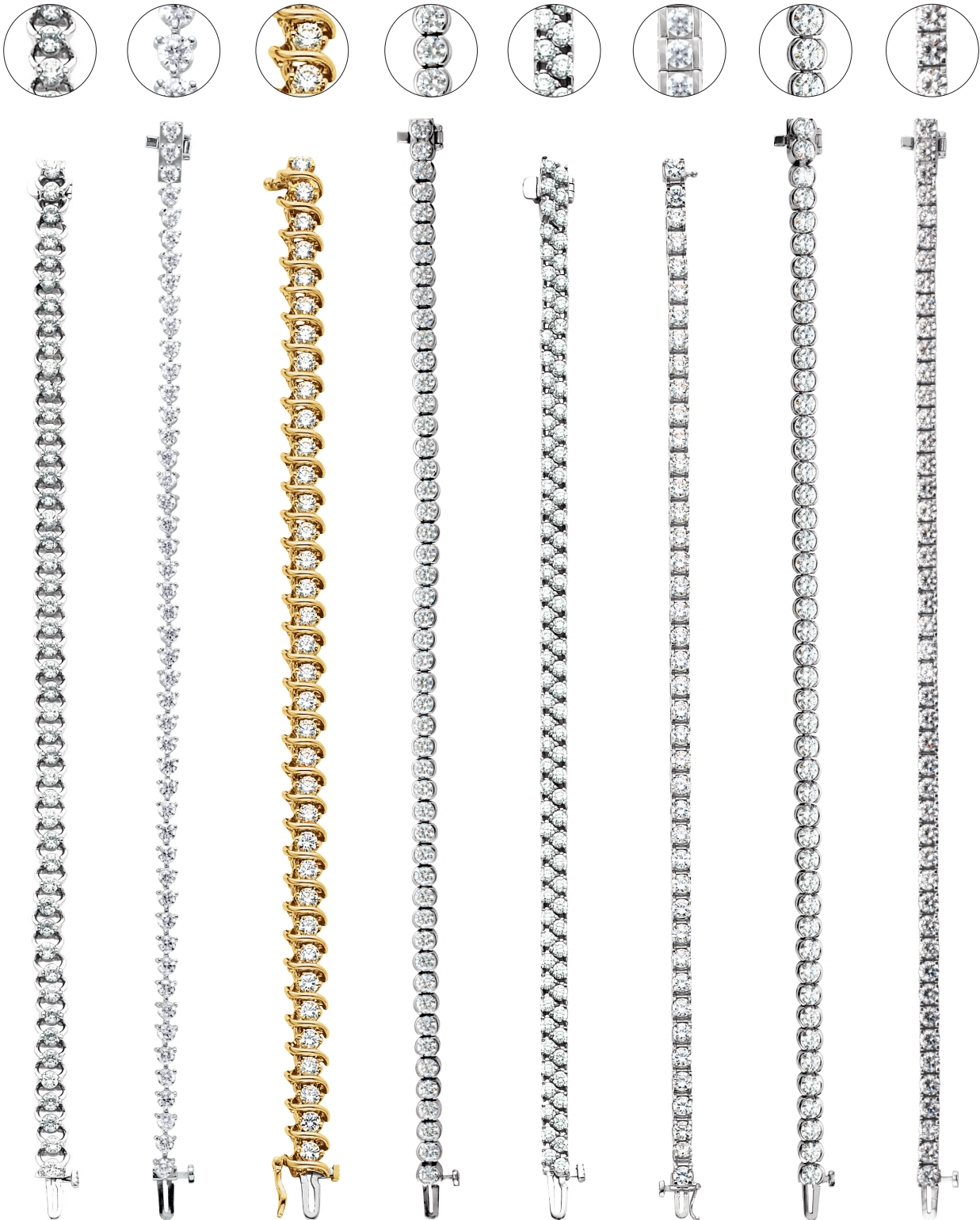
Suggested retail prices based on \$1,600 gold, \$1,700 platinum and \$30 silver. Visit stuller.com for our complete product selections and current pricing. | 851

LINE BRACELETS: 3½-4½ ct tw



BRC441	BRC656	BRC153	BRC112	BRC110	BRC442	BRC443	BRC76	BRC444
14kt	14kt	14kt	14kt	14kt	14kt	14kt	14kt	14kt
3½ ct tw	3½ ct tw	4 ct tw	4 ct tw	4 ct tw	4 ct tw	4 ct tw	4⅒ ct tw	4½ ct tw
(51- 2.7), 7¼"	(46- 2.7), 7¼"	(40- 3.0), 7"	(33- 3.2), 7"	(40- 3.0), 7"	(66- 2.5), 7¼"	(79- 2x2), 7¼"	(41- 3.0), 7"	(50- 2.9), 7¼"
\$2,005	\$1,889	\$2,419	\$2,269	\$2,105	\$3,229	\$2,699	\$2,005	\$2,215
7.40 dwt	6.93 dwt	11.95 dwt	11.20 dwt	10.22 dwt	12.32 dwt	10.19 dwt	9.89 dwt	8.23 dwt
FJ #67396				FJ #64794	FJ #67413	FJ #64714		FJ #67415

LINE BRACELETS: 5-7 ct tw



BRC317

14kt
5 ct tw
(47- 3.0), 7"
\$2,175
10.28 dwt

BRC434

14kt
5 ct tw
(48- 3.0), 7¼"
\$1,845
6.76 dwt
FJ #67501

BRC153

14kt
5½ ct tw
(36- 3.5), 7"
\$2,715
13.39 dwt

BRC440

14kt
6 ct tw
(50- 3.2), 7¼"
\$2,649
9.99 dwt
FJ #67412

BRC319

14kt
6 ct tw
(94- 2.5), 7"
\$1,989
9.41 dwt

BRC20

14kt
6½ ct tw
(42- 3.4), 7"
\$2,019
7.46 dwt
FJ #60873

BRC440

14kt
7 ct tw
(47- 3.4), 7¼"
\$2,599
9.79 dwt

BRC445

14kt
7 ct tw
(47- 3.4), 7¼"
\$2,259
8.43 dwt
FJ #67502

Most items available in any metal quality.

Suggested retail prices based on \$1,600 gold, \$1,700 platinum and \$30 silver.
Visit stuller.com for our complete product selections and current pricing. | 853

LINE BRACELETS



BRC447	BRC446	BRC152	BRC13	BRC447	BRC447	BRC448	BRC665	BRC665
14kt	14kt	14kt	14kt	14kt	14kt	14kt	14kt	14kt
9 ct tw	9 ct tw	9½ ct tw	9¼ ct tw	10 ct tw	12 ct tw	12 ct tw	¾ ct tw	1½ ct tw
(39- 4.0), 7¼"	(57- 3x3), 7¼"	(56- 3x3), 7"	(37- 4.1), 7"	(39- 4.1), 7¼"	(39- 4.3), 7¼"	(36- 4.4), 7¼"	(14- 2.4), 7¼"	(13- 3.1), 7¼"
\$3,189	\$3,319	\$3,095	\$2,099	\$3,295	\$3,455	\$2,695	\$1,615	\$1,909
12.16 dwt	12.69 dwt	14.47 dwt	7.77 dwt	12.58 dwt	13.21 dwt	10.16 dwt	5.84 dwt	7.01 dwt
FJ #67416	FJ #67503			FJ #67416		FJ #67504		

LINE BRACELETS



BRC78
14kt
¾ ct tw
(14- 2.4), 7"
\$1,385
6.68 dwt
FJ #60880

BRC229
14kt
2 ct tw
(28- 2.7), 7"
\$1,559
7.54 dwt

BRC657
14kt
1 ct tw
(14- 2.7), 7¼"
\$1,895
6.94 dwt

BRC234
14kt
½ ct tw
(12- 2.2), 7"
\$1,505
7.34 dwt

BRC659
14kt
1 ct tw
(10- 3.0), 7¼"
\$2,025
7.46 dwt

BRC165
14kt
¾ ct tw
(7- 3.0), 7"
\$1,825
8.82 dwt

BRC651
14kt
¾ ct tw
(7- 3.0), 7"
\$2,505
9.40 dwt

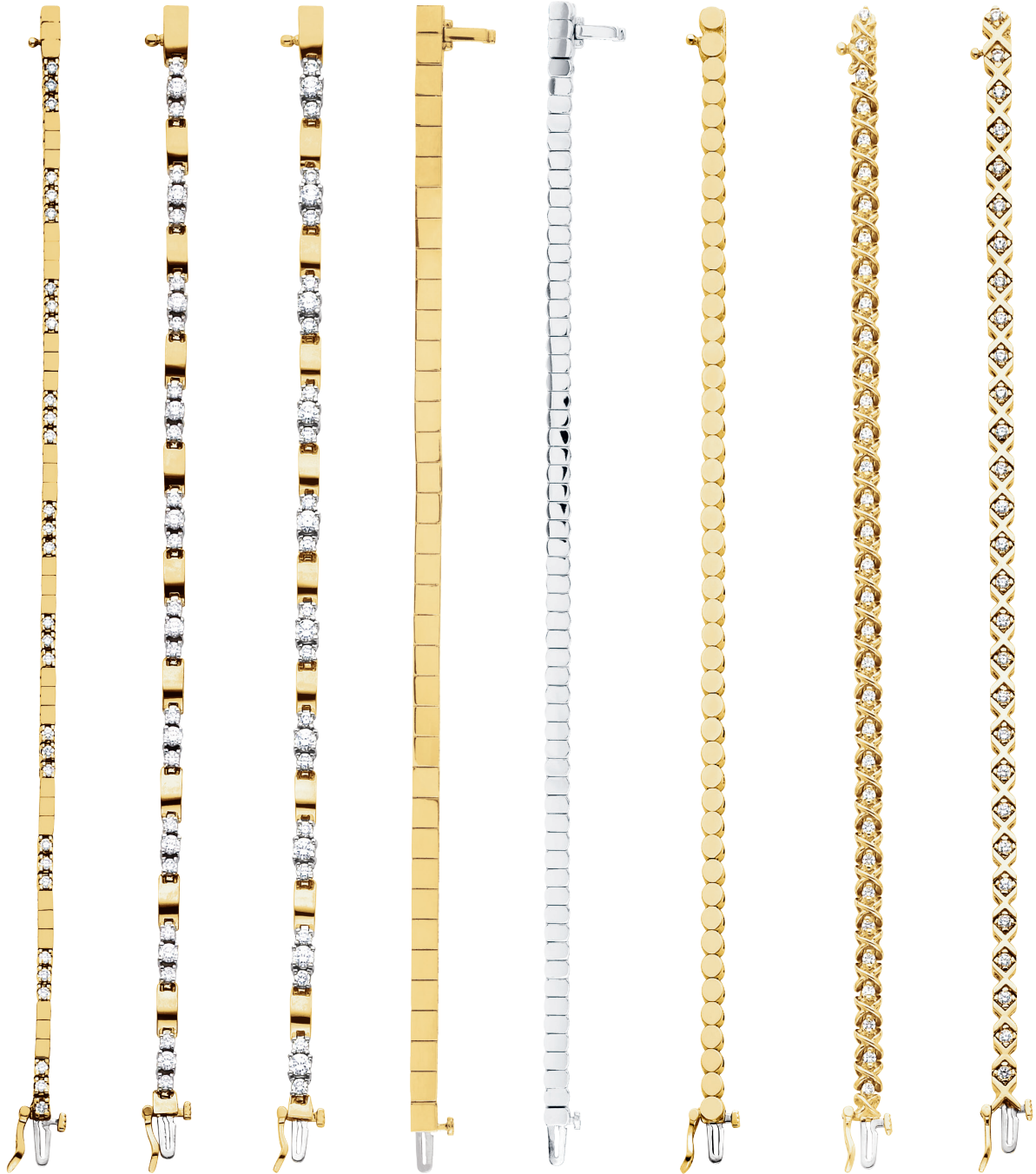
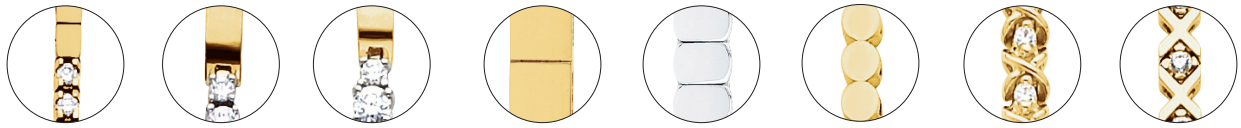
BRC651
14kt
two-tone
1 ct tw
(7- 3.4), 7"
\$2,895
10.97 dwt

BRC651
14kt
two-tone
1¾ ct tw
(6- 4.3), 7"
\$3,949
15.22 dwt

Most items available in any metal quality.

Suggested retail prices based on \$1,600 gold, \$1,700 platinum and \$30 silver.
Visit stuller.com for our complete product selections and current pricing. | 855

LINE BRACELETS



BRC74

14kt
1 ct tw
(30- 2.0), 7"
\$1,749
8.32 dwt
FJ #60881

BRC151

14kt two-tone
1¼ ct tw
(10- 3.0
20- 2.2), 7"
\$1,639
8.12 dwt
FJ #61720

BRC151

14kt two-tone
2½ ct tw
(10- 3.4
20- 2.4), 7"
\$1,735
8.39 dwt

BRC650

14kt, 7"
\$3,709
14.25 dwt
(add a diamond)

BRC653

14kt, 7"
\$3,595
13.78 dwt
(add a diamond)

BRC169

14kt, 7"
\$2,019
9.87 dwt
(add a diamond)

BRC163

14kt
2½ ct tw
(24- 3.2), 7"
\$2,255
11.12 dwt
Also available in
1 ct tw

BRC80

14kt
1¼ ct tw
(29- 2.2), 7"
\$2,095
9.98 dwt

LINE BRACELETS



BRC77
14kt
7/8 ct tw
(28- 2.0), 7"
\$2,649
12.61 dwt



BRC113
14kt two-tone
2 ct tw
(49- 2.2), 7"
\$2,415
11.48 dwt



BRC696
14kt
1 ct tw
(220- 1.0), 7"
\$3,139
11.96 dwt



BRC699
14kt
1 ct tw
(222- 1.0), 7"
\$2,695
10.16 dwt



BRC741
14kt
5/8 ct tw
(128- 1.0), 8"
\$3,285
6.95 dwt
FJ #BRC741



BRC746
14kt
(14- 1.5), 8"
\$1,225
4.63 dwt

Most items available in any metal quality.

Suggested retail prices based on \$1,600 gold, \$1,700 platinum and \$30 silver.
Visit stuller.com for our complete product selections and current pricing. | 857

LINE BRACELETS



BRC160
14kt, 7"
12- 5x3
\$2,119
7.18 dwt
FJ #62081



BRC160
14kt, 7"
10- 7x5
\$2,445
8.27 dwt
FJ #62080



BRC69
14kt, 7"
20- 6x4
\$1,605
5.43 dwt
FJ #60883



BRC54
14kt, 7"
18- 7x5
\$1,909
6.47 dwt



BRC16
14kt, 7"
18- 6x4
1/4 ct tw
(36- 1.7)
\$2,515
7.30 dwt



BRC14
14kt, 7"
15- 8x6
1/10 ct tw
(30- 2.0)
\$2,465
7.35 dwt



BRC230
14kt, 7"
11- 6x4
1 1/2 ct tw
(22- 2.5)
\$4,865
16.18 dwt
FJ #63760



BRC230
14kt, 7"
9- 7x5
1 ct tw
(18- 2.5)
\$3,485
11.59 dwt
FJ #63760



BRC121
14kt, 7"
7- 10x8
\$1,169
3.51 dwt
FJ #61007
and #61980



BRC121
14kt, 7"
6- 14x10
\$1,249
3.62 dwt
FJ #61980

BRACELET TRIM



8965 14kt
 $\frac{3}{8}$ ct tw (18- 1.7, 2- 1.3), 8.5x30
 \$519, 1.78 dwt



8527 14kt
 $\frac{1}{8}$ ct tw (1- 3.2, 2- 1.7), 8x36
 \$585, 2.05 dwt



80454 14kt
 $\frac{1}{8}$ ct tw (2- 2.2), 4.0
 \$315, 0.95 dwt



8526 14kt
 $\frac{1}{8}$ ct tw (1- 2.7, 2- 2.0), 7.5x38
 \$589, 2.06 dwt



8954 14kt
 $\frac{1}{8}$ ct tw (7- 1.8), 3x19.5
 \$245, 0.68 dwt



8963 14kt
 $1\frac{1}{8}$ ct tw (12- 3.0)
 3x42.5, \$469, 1.59 dwt



8958 14kt
 $\frac{3}{8}$ ct tw (14- 2.5)
 3x43, \$399, 1.29 dwt



8944 14kt
 0.05 ct tw (1- 1.7, 2- 1.5)
 3x30, \$295, 0.88 dwt



8515 14kt
 1- 8x5, $\frac{1}{8}$ ct tw (6- 1.7), 8x39
 \$475, 1.61 dwt



8694 14kt
 1- 8x4, 0.06 ct tw (2- 2.0), 7x30
 \$585, 2.04 dwt



8972 14kt
 1- 8x4, 2- 6x3, $\frac{1}{8}$ ct tw
 (4- 1.7, 4- 1.5), 10x41
 \$615, 2.30 dwt



81361 14kt
 1- 8x6, 0.025 ct tw (2- 1.5), 11x37
 \$839, 3.07 dwt



81130 14kt
 7.5x37.5
 \$505, 1.71 dwt



81314 14kt
 \$645, 2.24 dwt



81129 14kt
 8x36
 \$449, 1.50 dwt



8353 14kt
 18x35
 \$555, 1.91 dwt

Most items available in any metal quality.

Suggested retail prices based on \$1,600 gold, \$1,700 platinum and \$30 silver.
 Visit stuller.com for our complete product selections and current pricing. | 859

BANGLE BRACELETS



BRC321 14kt
 $\frac{1}{4}$ ct tw (1- 4.1)
 \$3,485, 13.53 dwt



BRC389 14kt
 1 ct tw (1- 4.4), 1 ct tw (7- 2.9)
 \$3,779, 14.68 dwt
 FJ #66875



BRC47 14kt
 $\frac{3}{4}$ ct tw (17- 2.4)
 \$1,979, 7.42 dwt



BRC25 14kt
 1 ct tw (33- 2.0)
 \$3,255, 12.55 dwt



BRC49 14kt
 $\frac{3}{4}$ ct tw (28- 2.0)
 \$2,949, 11.31 dwt



BRC10 14kt
 $\frac{1}{2}$ ct tw (11- 2.4)
 \$2,559, 9.75 dwt



BRC53 14kt
 $\frac{3}{4}$ ct tw (18- 2.2)
 \$2,619, 9.91 dwt



BRC5 14kt
 $\frac{1}{4}$ ct tw (7- 2.2)
 \$2,045, 7.71 dwt
 FJ #60889



BRC6 14kt
 $1\frac{1}{2}$ ct tw (49- 2.0)
 \$3,159, 12.16 dwt

BANGLE BRACELETS



BRC308 14kt
 $\frac{1}{4}$ ct tw (5- 2.4)
 \$2,375, 9.04 dwt
 FJ #65101



BRC48 14kt
 $\frac{1}{2}$ ct tw (11- 2.4)
 \$3,195, 12.29 dwt
 FJ #60890



BRC4 14kt two-tone
 $\frac{5}{8}$ ct tw (30- 1.7)
 \$3,225, 12.41 dwt



BRC309 14kt
 $\frac{5}{8}$ ct tw (3- 3.25x3.25)
 \$2,615, 10.20 dwt
 FJ #66021



BRC311 14kt
 $\frac{1}{2}$ ct tw (3- 3.2)
 \$2,169, 8.25 dwt



BRC9 14kt
 $\frac{1}{2}$ ct tw (1- 3.0, 2- 2.5, 2- 1.7)
 \$3,515, 13.58 dwt
 FJ #60886



BRC344 14kt
 $\frac{1}{4}$ ct tw (1- 3.0, 1- 2.5, 1- 2.0,
 1- 1.7, 1- 1.5, 1- 1.3, 1- 1.0)
 \$3,765, 14.66 dwt
 FJ #65468



BRC51 14kt
 $2\frac{1}{2}$ ct tw (2- 3.4, 4- 3.1, 6- 2.8, 22- 2.4)
 \$4,169, 16.23 dwt



BRC73 14kt two-tone
 1- 6x4, $\frac{1}{8}$ ct tw (4- 1.7,
 2- 1.5, 2- 1.3)
 \$2,345 8.87 dwt

Most items available in any metal quality.

Suggested retail prices based on \$1,600 gold, \$1,700 platinum and \$30 silver.
 Visit stuller.com for our complete product selections and current pricing. | 861

BANGLE BRACELETS



BRC3 14kt
\$3,549, 13.73 dwt



BRC8 14kt
\$2,989, 11.47 dwt



BRC7 14kt
\$3,679, 14.24 dwt



BRC81 14kt
4.0 width
\$1,749, 6.94 dwt



BRC81 14kt
6.0 width
\$2,915, 11.01 dwt



BRC81 14kt
8.0 width
\$3,305, 13.27 dwt



BRC2 14kt
\$2,265, 8.54 dwt



BRC1 14kt
2.0 width
\$745, 2.95 dwt



BRC1 14kt
4.0 width
\$1,405, 5.92 dwt

BANGLE BRACELETS



BRC1 14kt
6.0 width
\$1,935, 8.98 dwt



BRC1 14kt
8.0 width
\$2,585, 11.99 dwt



BRC85 14kt
4.0 width
\$1,749, 6.86 dwt



BRC180 14kt
4.0 width
\$689, 2.75 dwt



BRC180 14kt
4.0 width
\$685, 2.75 dwt



BRC181 14kt
4.8 width
\$739, 3.01 dwt



BRC181 14kt
4.8 width
\$745, 3.01 dwt



BRC185 14kt
6.5 width
\$1,185, 4.55 dwt



BRC185 14kt
6.5 width
\$1,179, 4.55 dwt

Most items available in any metal quality.

Suggested retail prices based on \$1,600 gold, \$1,700 platinum and \$30 silver.
Visit stuller.com for our complete product selections and current pricing. | 863

BRACELET SLIDES



81020 14kt
1- 6.0, 14.5x14.5
\$795, 2.89 dwt



80880 14kt
1- 6.0, 0.04 ct tw
(4- 1.3) 10.75
\$675, 2.40 dwt



81018 14kt
1- 4.0, 12.5x12.5
\$739, 2.66 dwt



80969 14kt
1- 4.0
\$749, 1.61 dwt



81011 14kt
1- 3.5, ¼ ct tw (4- 2.5)
15.75x15.25
\$715, 2.57 dwt



81016 14kt
½ ct tw (1- 3.5)
14.5x11.75
\$775, 2.81 dwt



80884 14kt
1- 9x7, 13.75x12
\$675, 2.39 dwt



81005 14kt
1- 8x6, 13.25x15
\$785, 2.84 dwt



81046 14kt
1- 8x6, 13x13
\$685, 2.44 dwt



80794 14kt
1- 8x4, 0.025 ct tw
(2- 1.3), 16.5x12
\$685, 2.45 dwt



81030 14kt
1- 7x5, 13.25x11.25
\$569, 1.13 dwt



81035 14kt
1- 7x5, 13.5x11.75
\$655, 2.32 dwt



80883 14kt
1- 6x4, 14x12
\$609, 1.15 dwt



80875 14kt
1- 6x4, 9.75x7.75
\$415, 1.35 dwt



81016 14kt
⅜ ct tw (1- 3.5)
14.5x11.75
\$775, 2.81 dwt



80904 14kt
1- 7x5, 13.5x10.5
\$605, 2.12 dwt



81019 14kt
1- 6x4, 15.25x12.25
\$659, 2.35 dwt



81009 14kt
½ ct tw (1- 4x2
2- 1.7), 13x6.25
\$459, 1.55 dwt



81010 14kt
0.06 ct tw (2- 2.0)
11x6.75
\$495, 1.69 dwt



80888 14kt
1- 4x2, 13.5x4.5
\$359, 1.13 dwt



80989 14kt
11.5x12.5
\$529, 1.82 dwt



80992 14kt
10.5x9.3
\$515, 1.75 dwt



80876 14kt
15.5x9.5
\$589, 2.06 dwt



80810 14kt
17.3x12
\$805, 2.92 dwt

BRACELET SLIDES



80806 14kt
17.3x12
\$649, 2.30 dwt



80805 14kt
17.3x12
\$655, 2.31 dwt



80824 14kt
14x14
\$715, 2.55 dwt



80823 14kt
12x12
\$555, 1.92 dwt



80822 14kt
10x10
\$419, 1.38 dwt



80849 14kt
18x11
\$709, 2.53 dwt



80835 14kt
14x12
\$605, 2.13 dwt



80828 14kt
12x10
\$495, 1.67 dwt



80821 14kt
10x8
\$365, 1.17 dwt



80859 14kt
13.3x18.3
\$855, 3.13 dwt



80815 14kt
15x9
\$505, 1.73 dwt



80831 14kt
11x11
\$619, 2.18 dwt



80838 14kt
13x4.3
\$355, 1.12 dwt



80836 14kt
11x6.5
\$355, 1.11 dwt



80851 14kt
10x4.3
\$305, 0.91 dwt



80820 14kt
12x12
\$545, 1.89 dwt



80854 14kt
15.75x11
\$545, 1.89 dwt



81183 14kt
1- 8x6, 1/8 ct tw (2- 2.5)
15x20.5
\$1,219, 4.59 dwt



81027 14kt
1- 7x5, 13.25x11.25
\$655, 2.33 dwt



81025 14kt
1- 6.0, 14.5x14.5
\$855, 3.12 dwt



81032 14kt
1- 4.0, 12.5x12.5
\$855, 3.13 dwt



80871 14kt
12x12
\$699, 2.50 dwt



80869 14kt
12x10
\$519, 1.78 dwt



80870 14kt
11x11
\$645, 2.28 dwt

Most items available in any metal quality.

Suggested retail prices based on \$1,600 gold, \$1,700 platinum and \$30 silver. Visit stuller.com for our complete product selections and current pricing. | 865

BROOCHES



83804 14kt two-tone
 $\frac{1}{4}$ ct tw (4- 1.8
 4- 1.5, 17- 1.3, 5- 1.2)
 27.75x22.14
 \$999, 3.71 dwt



83806 14kt two-tone
 $\frac{1}{8}$ ct tw (10- 1.3)
 32x29.25
 \$1,535, 5.62 dwt



83727 14kt
 $\frac{1}{8}$ ct tw (5- 1.5)
 16.25x26.5
 \$779, 2.58 dwt



83365 14kt
 $\frac{1}{8}$ ct tw (4- 1.4, 3- 1.2
 1- 1.0), 46.25x15.25
 \$1,769, 6.56 dwt



83399 14kt
 $\frac{1}{8}$ ct tw (5- 1.5, 2- 1.3
 2- 1.0), 24.75x25.75
 \$1,335, 4.81 dwt
 matching pendant #83400



8256 14kt
 $1\frac{3}{8}$ ct tw (20- 2.7), 28x28
 \$975, 3.38 dwt



82070 14kt
 $\frac{1}{4}$ ct tw (3- 2.2, 2- 2.0
 2- 1.8, 2- 1.5, 2- 1.0), 40.5x15.5
 \$1,155, 4.34 dwt



83367 14kt
 $.025$ ct tw (3- 1.2)
 48.25x6.75
 \$779, 2.59 dwt



8474 14kt
 $\frac{1}{8}$ ct tw (3- 2.0), 38x9
 \$595, 1.84 dwt



83370 14kt
 $\frac{1}{8}$ ct tw (4- 1.7), 40x5.75
 \$665, 2.12 dwt



83369 14kt
 $\frac{1}{8}$ ct tw (4- 1.75x1.5
 1- 1.8, 26- 1.0), 30.25x8
 \$595, 1.85 dwt



83380 14kt
 $\frac{1}{8}$ ct tw (4- 4x2, 1- 2.4
 30- 1.0), 34.5x6.75
 \$705, 2.49 dwt



83381 14kt
0.07 ct tw (13- 1.0)
31x10.75
\$1,225, 4.37 dwt



83376 14kt
1/8 ct tw (1- 2.0, 2- 1.7
4- 1.5, 4- 1.0), 19x31.75
\$1,119, 3.96 dwt



83387 14kt
3/8 ct tw (1- 2.3
54- 1.2), 17.25x43
\$1,235, 4.66 dwt



83467 14kt
1/2 ct tw (1- 5.0), 58x19
\$1,989, 7.45 dwt



83572 14kt
1- 3.0, 1 1/8 ct tw (28- 1.0), 15.25x29.75
\$862, 2.93 dwt



80675 14kt
1- 8x6, 15.5x38.5
\$769, 2.54 dwt



8924 14kt
1- 9x7, .08 ct tw
(3- 1.8) 40x15.5
\$1,015, 2.88 dwt



8537 14kt
1- 7x5, 1/2 ct tw
(6- 2.0) 38.5x15.5
\$1,015, 2.12 dwt



8540 14kt
1- 6x4, 1/8 ct tw
(4- 1.7, 4- 1.3) 36x8
\$785, 2.61 dwt



8502 14kt
1- 9x6, .06 ct tw
(3- 1.7) 39x11
\$1,105, 3.89 dwt

Most items available in any metal quality.

Suggested retail prices based on \$1,600 gold, \$1,700 platinum and \$30 silver.
Visit stuller.com for our complete product selections and current pricing. | 867

BROOCHES



8693 14kt
15x9
\$275, 0.57 dwt



8481 14kt
9x34
\$809, 2.70 dwt



8477 14kt
17x35
\$555, 1.67 dwt



8473 14kt
19x46
\$785, 2.61 dwt



8535 14kt two-tone
52x29
\$1,825, 6.78 dwt



8536 14kt
54x13
\$859, 2.90 dwt



8534 14kt two-tone
14x58
\$1,595, 5.85 dwt



8530 14kt
75x19
\$1,199, 4.27 dwt



8532 14kt two-tone
59x23
\$1,505, 5.50 dwt



84267 14kt
63x16
\$1,965, 7.36 dwt



84141 14kt
62.3x47.3
\$1,689, 6.24 dwt



84140 14kt
38.3x60.8
\$2,085, 8.07 dwt



84139 14kt
28.5x51
\$2,039, 7.65 dwt



84266 14kt
69.3x17
\$1,369, 4.95 dwt



8649 14kt two-tone
80x22
\$2,495, 9.47 dwt



84138 14kt
46.5x51
\$3,045, 11.70 dwt

Most items available in any metal quality.

Suggested retail prices based on \$1,600 gold, \$1,700 platinum and \$30 silver. Visit stuller.com for our complete product selections and current pricing. | 869

BROOCHES



8478 14kt
33x26
\$1,125, 3.98 dwt



84286 sterling silver/14kt yellow
31.8x24.8
\$289, 3.67 dwt



84289 sterling silver/14kt yellow
32.5x30
\$325, 4.52 dwt



83795 14kt
31.5x24
\$1,165, 4.02 dwt



21582 14kt
24x40.3
\$469, 1.80 dwt



8550 14kt
21x19
\$445, 1.23 dwt



8554 14kt
27x25
\$695, 2.49 dwt



8195 14kt
18x16
\$645, 2.05 dwt



82161 14kt
35.8x31.5
\$1,735, 6.43 dwt



82164 14kt
41.3x20.8
\$1,575, 5.79 dwt



82072 14kt
41.3x20.8
\$1,415, 5.13 dwt



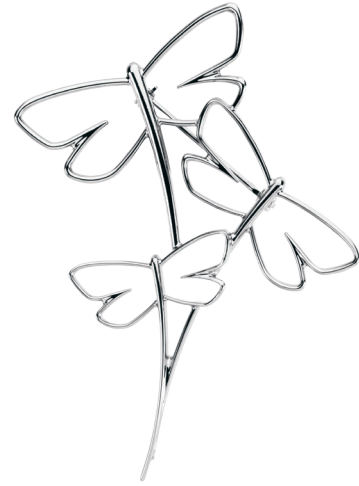
82160 14kt
78.8x36
\$1,699, 6.28 dwt



84372 14kt
 1/2 ct tw (1- 1.8, 1- 1.7, 2- 1.6
 2- 1.54-1.4, 6- 1.3), 66x50.25
 \$1,475, 5.63 dwt



84457 14kt
 43x59.5
 \$1,399, 5.32 dwt



84366 14kt
 64x46.5
 \$1,289, 4.73 dwt



84450 14kt
 36x44
 \$959, 3.45 dwt



84448 14kt
 46x41
 \$945, 3.50 dwt



84453 14kt
 51.5x44
 \$1,475, 5.47 dwt



83539 14kt
 \$1,069, 4.05 dwt



84070 14kt
 39.5x52
 \$1,145, 4.76 dwt



84069 14kt
 35x43.5
 \$1,379, 4.99 dwt

Most items available in any metal quality.

Suggested retail prices based on \$1,600 gold, \$1,700 platinum and \$30 silver.
 Visit stuller.com for our complete product selections and current pricing. | 871