





Neckwear

680	Featured Designs	746	Pear
689	Round	750	Heart
728	Oval	751	Trillion
736	Cushion	752	Fancy Shapes
738	Emerald	753	Neck Trim
741	Square	755	Pendant Enhancers
744	Marquise	756	Metal



CHOOSE
CHANGE
CREATE

*Shown above: NCK225
For product information, visit stuller.com.*

PENDANTS



85654

Shown with 9x7mm oval sapphire center, sold separately.


Chain sold separately.

½ ct tw (16- 2.0)
14kt, \$366, 1.17 dwt

CENTER STONE OPTIONS




Round

 5.0, 5.2, 5.5, 5.8, 6.0, 6.5, 7.0, 7.4, 7.5, 8.0, 8.2, 8.8, 9.0, 9.4, 9.5, 10.0, 11.0, 12.0, 13.0, 14.0, 15.0




Oval

 7x5, 8x6, 9x7, 10x8, 11x9, 12x10

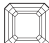


Cushion

 5x5, 6x6, 7x7, 8x8, 9x9, 10x10, 11x11, 12x12, 13x13, 14x14, 15x15




Asscher

 5x5, 5.5x5.5, 6x6, 6.5x6.5, 7x7, 8x8, 9x9, 10x10




Emerald

 6x4, 7x5, 8x6, 9x7, 10x8, 11x9, 12x10, 14x10, 15x11, 16x12




Square/Princess

 5x5, 5.25x5.25, 5.5x5.5, 6x6, 6.5x6.5, 7x7, 7.5x7.5, 8x8, 9x9, 9.5x9.5, 10x10




Marquise

 6x3.5, 7x3.5, 8x4, 9x4.5, 10x5, 12x6



Pear

 7x5, 8x5, 8x6, 9x6, 10x7, 12x8



85656

Shown with 10x7mm pear amethyst center, sold separately.

Chain sold separately.

1/6 ct tw (34- 1.0)
14kt, \$286, 0.85 dwt

CENTER STONE OPTIONS



Round



4.0, 4.1, 4.4, 4.5, 4.8, 5.0, 5.2, 5.5, 5.8, 6.0, 6.5, 7.0, 7.4, 7.5, 8.0, 8.2, 8.8, 9.0, 9.4, 9.5, 10.0, 11.0, 12.0



Oval



5x4, 6x4, 7x5, 8x6, 9x7, 10x8, 11x9, 12x10



Cushion



5x5, 6x6, 7x7, 8x8, 9x9, 10x10



Asscher



5x5, 5.5x5.5, 6x6, 6.5x6.5, 7x7



Emerald



5x3, 6x4, 7x5, 8x6, 9x7, 10x8, 11x9, 12x10



Square/Princess



4x4, 4.5x4.5, 4.75x4.75, 5x5, 5.25x5.25, 5.5x5.5, 6x6, 6.5x6.5, 7x7, 7.5x7.5, 8x8, 9x9, 9.5x9.5, 10x10



Marquise



6x3.5, 7x3.5, 8x4, 9x4.5, 10x5, 12x6



Pear



6x4, 7x5, 8x5, 8x6, 9x6, 10x7, 12x8



Heart



5x5, 6x6, 7x7, 8x8, 9x9, 10x10

Styles in this section are available in all metal qualities, as mounting, semi-mount or complete. Customization available through Stuller CAM Services or with CounterSketch® Studio software. Dimensions are given in millimeters.

PENDANTS



85438

Shown with 6.5mm round ruby center, sold separately.

Chain sold separately.

¼ ct tw (24- 1.3)
14kt, \$227, 0.61 dwt

CENTER STONE OPTIONS



Round



4.0, 4.1, 4.4, 4.5, 4.8, 5.0,
5.2, 5.5, 5.8, 6.0, 6.5, 7.0,
7.4, 7.5, 8.0, 8.2, 8.8, 9.0,
9.4, 9.5, 10.0, 11.0, 12.0



Oval



6x4, 7x5, 8x6, 9x7, 10x8,
11x9, 12x10



Cushion



5x5, 6x6, 7x7, 8x8, 9x9,
10x10



Asscher



5x5, 5.5x5.5, 6x6, 6.5x6.5,
7x7



Emerald



6x4, 7x5, 8x6, 9x7, 10x8,
11x9, 12x10



Square/Princess



5x5, 5.25x5.25, 5.5x5.5, 6x6,
6.5x6.5, 7x7, 7.5x7.5, 8x8,
9x9, 9.5x9.5, 10x10



Marquise



8x4, 9x4.5, 10x5, 12x6



Pear



6x4, 7x5, 8x5, 8x6, 9x6,
10x7, 12x8



Heart



5x5, 6x6, 7x7, 8x8, 9x9,
10x10



85439

Shown with 7x7mm asscher-cut Black Box Gemstone® yellow sapphire center, sold separately.

Chain sold separately.

1/6 ct tw (33- 1.0)
14kt, \$299, 0.90 dwt

CENTER STONE OPTIONS



Round



5.0, 5.2, 5.5, 5.8, 6.0, 6.5, 7.0, 7.4, 7.5, 8.0, 8.2, 8.8, 9.0, 9.4, 9.5, 10.0



Cushion



5x5, 6x6, 7x7, 8x8



Asscher



5x5, 5.5x5.5, 6x6, 6.5x6.5, 7x7



Square/Princess



4x4, 4.5x4.5, 4.75x4.75, 5x5, 5.25x5.25, 5.5x5.5, 6x6, 6.5x6.5, 7x7, 7.5x7.5, 8x8

Styles in this section are available in all metal qualities, as mounting, semi-mount or complete. Customization available through Stuller CAM Services or with CounterSketch® Studio software. Dimensions are given in millimeters.



10kt
14kt



10kt
18kt



10kt
14kt
18kt
14kt X1



sterling
silver



platinum
950

PENDANTS



85437

Shown with 10x7mm pear center, sold separately.

Chain sold separately.

¾ ct tw (6- 1.5, 63- 1.3)
14kt, \$445, 1.49 dwt

CENTER STONE OPTIONS



Round



4.0, 4.1, 4.4, 4.5, 4.8, 5.0, 5.2, 5.5, 5.8, 6.0, 6.5, 7.0, 7.4, 7.5, 8.0, 8.2, 8.8, 9.0, 9.4, 9.5, 10.0, 11.0, 12.0

Oval



6x4, 7x5, 8x6, 9x7, 10x8, 11x9, 12x10

Cushion



5x5, 6x6, 7x7, 8x8, 9x9, 10x10

Asscher



5x5, 5.5x5.5, 6x6, 6.5x6.5, 7x7

Emerald



6x4, 7x5, 8x6, 9x7, 10x8, 11x9, 12x10

Square/Princess



5x5, 5.25x5.25, 5.5x5.5, 6x6, 6.5x6.5, 7x7, 7.5x7.5, 8x8, 9x9, 9.5x9.5, 10x10

Marquise



8x4, 9x4.5, 10x5, 12x6

Pear



6x4, 7x5, 8x5, 8x6, 9x6, 10x7, 12x8

Heart



5x5, 6x6, 7x7, 8x8, 9x9, 10x10



85436

Shown with 6.0mm round center, sold separately.

Chain sold separately.

$\frac{3}{8}$ ct tw (1- 2.5, 8- 1.3, 37- 1.2)
14kt, \$373, 1.20 dwt

CENTER STONE OPTIONS

Round



4.0, 4.1, 4.4, 4.5, 4.8, 5.0,
5.2, 5.5, 5.8, 6.0, 6.5, 7.0,
7.4, 7.5, 8.0

Oval



6x4, 7x5, 8x6, 9x7, 10x8,
11x9, 12x10

Cushion



5x5, 6x6, 7x7

Asscher



5x5, 5.5x5.5, 6x6, 6.5x6.5,
7x7

Emerald



6x4, 7x5, 8x6, 9x7

Square/Princess



4x4, 4.5x4.5, 4.75x4.75, 5x5,
5.25x5.25, 5.5x5.5, 6x6,
6.5x6.5, 7x7

Marquise



6x3, 6x3.5, 7x3.5, 8x4,
9x4.5, 10x5, 12x6

Pear



6x4, 7x5, 8x5, 8x6, 9x6,
10x7, 12x8

Heart



5x5, 6x6, 7x7, 8x8

Styles in this section are available in all metal qualities, as mounting, semi-mount or complete. Customization available through Stuller CAM Services or with CounterSketch® Studio software. Dimensions are given in millimeters.

PENDANTS



85435

Shown with 8mm round ruby center, sold separately.

Chain sold separately.

3/4 ct tw (64- 1.3)
14kt, \$403, 1.32 dwt

CENTER STONE OPTIONS



Round



4.0, 4.1, 4.4, 4.5, 4.8, 5.0,
5.2, 5.5, 5.8, 6.0, 6.5, 7.0,
7.4, 7.5, 8.0, 8.2, 8.8, 9.0,
9.4, 9.5, 10.0, 11.0, 12.0

Oval



6x4, 7x5, 8x6, 9x7, 10x8,
11x9, 12x10

Cushion



5x5, 6x6, 7x7, 8x8, 9x9,
10x10

Asscher



5x5, 5.5x5.5, 6x6, 6.5x6.5,
7x7

Emerald



6x4, 7x5, 8x6, 9x7, 10x8,
11x9, 12x10

Square/Princess



5x5, 5.25x5.25, 5.5x5.5, 6x6,
6.5x6.5, 7x7, 7.5x7.5, 8x8,
9x9, 9.5x9.5, 10x10

Marquise



8x4, 9x4.5, 10x5, 12x6

Pear



6x4, 7x5, 8x5, 8x6, 9x6,
10x7, 12x8

Heart



5x5, 6x6, 7x7, 8x8, 9x9,
10x10



85712

Shown with 8x6mm oval Pink Mystic Topaz center, sold separately.
Chain sold separately.

1/2 ct tw (9- 1.3, 45- 1.0, 13- 0.9)
14kt, \$624, 2.21 dwt

CENTER STONE OPTIONS



Round



4.0, 4.1, 4.4, 4.5, 4.8, 5.0,
5.2, 5.5, 5.8, 6.0, 6.5, 7.0,
7.4, 7.5, 8.0, 8.2, 8.8, 9.0,
9.4, 9.5, 10.0, 11.0, 12.0



Oval



5x4, 6x4, 7x5, 8x6, 9x7,
10x8, 11x9, 12x10



Cushion



5x5, 6x6, 7x7, 8x8, 9x9,
10x10



Asscher



5x5, 5.5x5.5, 6x6, 6.5x6.5,
7x7



Emerald



6x4, 7x5, 8x6, 9x7, 10x8,
11x9, 12x10

Styles in this section are available in all metal qualities, as mounting, semi-mount or complete. Customization available through Stuller CAM Services or with CounterSketch® Studio software. Dimensions are given in millimeters.

PENDANTS



85655

Shown with 10x8mm oval Swiss Blue Topaz center, sold separately.

Chain sold separately.

0.03 ct tw (6- 1.0)
14kt, \$261, 0.75 dwt

CENTER STONE OPTIONS



Round



4.0, 4.1, 4.4, 4.5, 4.8, 5.0,
5.2, 5.5, 5.8, 6.0, 6.5, 7.0,
7.4, 7.5, 8.0, 8.2, 8.8, 9.0,
9.4, 9.5, 10.0, 11.0, 12.0



Oval



5x4, 6x4, 7x5, 8x6, 9x7,
10x8, 11x9, 12x10



Cushion



5x5, 6x6, 7x7, 8x8, 9x9,
10x10



Asscher



5x5, 5.5x5.5, 6x6, 6.5x6.5,
7x7



Emerald



5x3, 6x4, 7x5, 8x6, 9x7,
10x8, 11x9, 12x10



Square/Princess



4x4, 4.5x4.5, 4.75x4.75, 5x5,
5.25x5.25, 5.5x5.5, 6x6,
6.5x6.5, 7x7, 7.5x7.5, 8x8,
9x9, 9.5x9.5, 10x10



Marquise



6x3.5, 7x3.5, 8x4, 9x4.5,
10x5, 12x6



Pear



6x4, 7x5, 8x5, 8x6, 9x6,
10x7, 12x8



Heart



5x5, 6x6, 7x7, 8x8, 9x9,
10x10

Styles in this section are available in all metal qualities, as mounting, semi-mount or complete. Customization available through Stuller CAM Services or with CounterSketch® Studio software. Dimensions are given in millimeters.



23559 3-Prong Wire Basket Pendant



mm Stone Size	3.0	3.5	4.0	4.5	5.0	5.5	6.0	6.5	7.0	7.5	8.0
Bail ID	1.5x1.3	1.75x1.3	2x1.3	2.25x1.5	2.5x1.5	3.25x2.1	3.25x2.1	3.25x2.1	3.75x1.9	4x2	4.25x2.3
dwt	0.10	0.12	0.14	0.17	0.21	0.25	0.29	0.36	0.37	0.44	0.48
14kt \$	\$29	\$35	\$39	\$45	\$55	\$65	\$69	\$85	\$89	\$105	\$115



28393 Lightweight 4-Prong Wire Basket Pendant



mm Stone Size	3.0	3.5	4.0	4.5	5.0	5.5	6.0	6.5	7.0	7.5	8.0
Bail ID	1.5x1.4	1.75x1.5	2x1.8	2.25x1.9	2.5x2	3x2.1	3.25x2.2	3.5x2.4	3.75x2.5	4x2.6	4.25x2.6
dwt	0.09	0.11	0.13	0.16	0.18	0.20	0.25	0.29	0.34	0.37	0.42
14kt \$	\$25	\$29	\$35	\$45	\$45	\$55	\$65	\$69	\$79	\$89	\$99



28392 4-Prong Wire Basket Pendant



mm Stone Size	3.0	3.5	4.0	4.5	5.0	5.5	6.0	6.5	7.0	7.5	8.0	8.5	9
Bail ID	1.5x1.4	1.75x1.5	2x1.8	2.25x1.8	2.5x2	3x2.1	3.25x2.2	3.5x2.4	3.75x2.5	4x2.6	4.25x2.6	4.5x2.7	4.75x2.8
dwt	0.12	0.14	0.17	0.21	0.26	0.31	0.34	0.38	0.43	0.48	0.54	0.64	0.65
14kt \$	\$35	\$39	\$45	\$55	\$65	\$75	\$79	\$95	\$99	\$109	\$125	\$149	\$149



mm Stone Size	10.0	10.5	11.0	12.0	13.0	14.0	16.0
Bail ID	5x2.9	5x3	5x3.1	5.5x3.2	6x3.4	6x3.5	6.5x3.8
dwt	0.77	0.85	0.92	1.08	1.25	1.46	1.87
14kt \$	\$175	\$195	\$209	\$245	\$279	\$325	\$409

Most items available in any metal quality.

Suggested retail prices based on \$1,600 gold, \$1,700 platinum and \$30 silver. Visit stuller.com for our complete product selections and current pricing. | 689



23994 4-Prong Round Pre-Notched Pendant

mm Stone Size	3.0	3.5	4.0	4.5	5.0	5.5	6.0	6.5	7.0	7.5	8.0
Bail ID	1.25x1.2	1.75x1.3	2.25x1.5	2.75x1.6	3x2	3.25x1.7	3.25x2.2	3.75x2.3	4x2.4	4.25x2.6	4.5x2.8
dwt	0.11	0.12	0.18	0.21	0.21	0.28	0.25	0.33	0.38	0.42	0.39
14kt \$	\$29	\$35	\$45	\$55	\$55	\$69	\$59	\$79	\$89	\$99	\$95

mm Stone Size	8.5	9.0	9.5	10.0	10.5
Bail ID	4.5x2.9	4.75x3.2	5x3.1	5.5x3.3	5x3.5
dwt	0.43	0.57	0.62	0.56	0.74
14kt \$	\$99	\$135	\$145	\$129	\$169



330 4-Prong Wire Basket Pendant

mm Stone Size	3.0	3.5	4.0	4.5	5.2	6.0	6.5	6.75	7.0	7.5	8.0	8.25	8.5
Bail ID	1.1	1.4x1.25	1.4x1.25	1.6x1.5	2.25x1.8	2.25x1.9	2.5x2	2x1.9	2x1.8	2.5x2.1	3x2.3	2.3x2.25	3.25x2.4
dwt	0.19	0.25	0.26	0.34	0.39	0.46	0.50	0.49	0.53	0.55	0.67	0.69	0.78
14kt \$	\$49	\$65	\$65	\$85	\$95	\$105	\$115	\$115	\$125	\$129	\$155	\$159	\$179

mm Stone Size	9.0	10.0	10.5	11.5	12.0	12.5	13.0	14.0
Bail ID	3.25x2.4	3.9x2.5	5.2x2.8	5.75x2.8	5.4x2.8	6.5x3.4	5.7x3.1	5.2x3
dwt	0.81	0.99	1.20	1.26	1.24	1.31	1.36	1.45
14kt \$	\$185	\$225	\$269	\$285	\$279	\$295	\$305	\$309

mm Stone Size	16.0	18.0	20.0	22.0
Bail ID	5.3x3.9	5.6x3.3	8.7x4.75	8.6x4.8
dwt	1.82	1.95	2.54	2.69
14kt \$	\$379	\$405	\$525	\$555



18309 4-Prong Pendant

mm Stone Size	1.7	2	2.4	2.7	3.0	3.4	3.8	4.1	4.4	5.2	5.8	6.5	7.0	7.4	8.2
Bail ID	1.25	1.25	1.25	1.25	1.25	1.25	1.25	1.5	1.5	1.5	2.5	2.25	2.5	2.75	2.5
dwt	0.09	0.09	0.11	0.12	0.13	0.19	0.2	0.23	0.27	0.27	0.48	0.48	0.84	0.7	0.57
14kt \$	\$25	\$25	\$29	\$35	\$35	\$45	\$49	\$65	\$69	\$65	\$109	\$109	\$195	\$159	\$135



18639 6-Prong Low Base Pendant

mm Stone Size	2.4	3.0	3.2	3.4	3.7	4.1
Bail ID	1.25	1.25	1.25	1.25	2.0	2.0
dwt	0.10	0.14	0.14	0.17	0.18	0.26
14kt \$	\$29	\$35	\$39	\$45	\$49	\$65

mm Stone Size	4.4	5.2	5.8	6.5	7.4	8.2
Bail ID	2.0	1.75	2.25	2.25	2.25	2.25
dwt	0.27	0.37	0.43	0.54	0.58	0.74
14kt \$	\$65	\$79	\$95	\$119	\$125	\$149



24965 6-Prong Crown Pendant

mm Stone Size	3.0	4.0	4.5	5.0	5.5
Bail ID	1.5	1.6	1.6	1.7	1.7
dwt	0.22	0.27	0.32	0.31	0.38
14kt \$	\$55	\$65	\$75	\$75	\$89

mm Stone Size	6.0	6.5	7.0	7.5	8.0
Bail ID	1.8	1.8	1.9	1.9	1.9
dwt	0.45	0.52	0.61	0.72	0.79
14kt \$	\$105	\$125	\$139	\$165	\$179



A. 24156 | B. 24147 | C. 23969

Most items available in any metal quality.

Suggested retail prices based on \$1,600 gold, \$1,700 platinum and \$30 silver. Visit stuller.com for our complete product selections and current pricing. | 691

PENDANTS



Neckwear | Round



24153 4-Prong Vintage Scroll Setting Pendant



mm Stone Size	8.5	9.0	9.5	10.0	10.5	11.0	11.5	12.0	14.0
Bail ID	2.2	2.4	2.4	2.7	2.8	2.8	3.2	3.3	3.6
dwt	0.56	0.66	0.72	0.78	0.87	0.98	0.98	1.12	1.49
14kt \$	\$135	\$155	\$169	\$185	\$205	\$225	\$229	\$259	\$325



mm Stone Size	16.0	18.0	20.0	22.0
Bail ID	3.9	4.0	4.2	4.3
dwt	1.78	2.08	2.58	2.89
14kt \$	\$375	\$435	\$539	\$605



1898 4-Prong Scroll Setting Pendant



mm Stone Size	3.0	3.5	4.0	4.5	5.0	5.5	6.0	6.5	7.0	8.0	9.0	10.0	11.0
Bail ID	1.75	1.75	2.0	2.0	2.0	2.0	2.5	2.5	2.5	2.5	2.5	2.5	2.5
dwt	0.22	0.23	0.30	0.32	0.35	0.37	0.47	0.45	0.60	0.67	0.73	1.01	1.16
14kt \$	\$65	\$65	\$85	\$89	\$95	\$99	\$125	\$115	\$149	\$165	\$179	\$239	\$275



mm Stone Size	12.0	14.0	16.0
Bail ID	2.5	3.5	3.5
dwt	1.30	1.80	2.07
14kt \$	\$289	\$385	\$439



24874 Filigree Back-Set Pendant



mm Stone Size	5.0	6.0	6.5	7.0	8.0
Bail ID	1.7	1.9	2.0	2.0	2.1
dwt	0.35	0.51	0.62	0.69	0.77
14kt \$	\$85	\$119	\$145	\$159	\$175



81319 Solitaire Pendant Slide



ct tw	1/10	1/6	1/5	1/4	1/3	3/8	1/2	5/8	3/4	7/8	1	1 1/4	1 1/2
mm Stone Size	3.0	3.4	3.8	4.1	4.4	4.8	5.2	5.6	5.8	6.2	6.5	7.0	7.4
OD	7.0	8.25	7.75	8.00	8.50	8.50	9.25	9.75	9.75	10.25	10.25	10.25	11.25
Chain Opening	1.40	1.40	1.40	1.65	1.65	1.65	1.65	1.65	1.90	1.90	1.90	1.90	1.90
dwt	0.57	0.63	0.72	0.77	0.82	0.88	0.94	1.09	1.06	1.26	1.29	1.41	1.48
14kt \$	\$189	\$205	\$225	\$239	\$255	\$265	\$279	\$319	\$309	\$365	\$369	\$399	\$415



81318 Solitaire Pendant Slide

ct tw	1/5	1/4	1/3	3/8	1/2	5/8	3/4	7/8	1	1 1/4	1 1/2
mm Stone Size	3.8	4.1	4.4	4.8	5.2	5.6	5.8	6.2	6.5	7.0	7.4
OD	7.75	7.75	8.50	9.25	9.25	9.50	9.75	10.25	10.25	11.0	11.50
Chain Opening	1.40	1.65	1.65	1.65	1.65	1.65	1.90	1.90	1.90	1.90	1.90
dwt	0.73	0.81	0.85	1.10	0.99	1.10	1.10	1.24	1.32	1.43	1.51
14kt \$	\$229	\$249	\$259	\$325	\$295	\$325	\$325	\$355	\$375	\$405	\$425



20987 Solitaire Pendant Slide

ct tw	1/10	1/2	1 1/4
mm Stone Size	3.0	5.0	7.0
OD	11.75	12.5	17.75
Chain Opening	1.50	2.00	2.00
dwt	1.13	1.79	2.57
14kt \$	\$219	\$325	\$455



21044 Two-tone Solitaire Pendant Slide

ct tw	.03	1/10	1/4	1/2	3/4	1 1/4
mm Stone Size	2.0	3.0	4.0	5.0	6.0	7.0
OD	9.50	9.50	12.75	12.75	15.0	15.0
Chain Opening	2.5x1.5	2.5x1.5	3.25x2	3.25x2	3.25x2	3.25x2
dwt	0.92	1.79	1.43	1.43	2.06	2.10
14kt \$	\$185	\$185	\$265	\$269	\$369	\$375



21238 Two-tone Solitaire Pendant Slide

ct tw	.03	.06	1/10
mm Stone Size	2.0	2.5	3.0
OD	8.25	8.25	8.25
Chain Opening	1.25	1.25	1.25
dwt	0.57	0.59	1.18
14kt \$	\$115	\$115	\$115

ct tw	1/4	1/2	3/4
mm Stone Size	4.0	5.0	6.0
OD	12.0	12.0	12.0
Chain Opening	1.25	1.25	1.25
dwt	1.18	1.22	1.22
14kt \$	\$229	\$239	\$235

matching earrings #21241



21043 Two-tone Solitaire Pendant Slide

ct tw	.03	1/10	1/4
mm Stone Size	2.0	3.0	4.0
OD	9.5	9.5	12.75
Chain Opening	2.5x1.5	2.5x1.5	3.25x2
dwt	0.92	0.91	1.43
14kt \$	\$185	\$185	\$265

ct tw	1/2	3/4	1 1/4
mm Stone Size	5.0	6.0	7.0
OD	12.75	15.0	15.0
Chain Opening	3.25x2	3.25x2	3.25x2
dwt	1.46	2.06	2.10
14kt \$	\$269	\$369	\$375

matching earrings #21241

PENDANTS



ROUND



84994 Cluster Pendant

ct tw	3/8	1/2	1/2	5/8	9/10	1
Center Stone	4.1	4.4	4.6	5.2	5.8	6.5
Accent Stones	1- 1.5, 1- 1.4, 1- 1.3, 1- 1.2, 1- 1.1, 17- 1.0	1- 1.5, 1- 1.4, 1- 1.3, 1- 1.2, 1- 1.1, 18- 1.0	1- 1.5, 1- 1.4, 1- 1.3, 1- 1.2, 1- 1.1, 19- 1.0	1- 1.5, 1- 1.4, 1- 1.3, 1- 1.2, 1- 1.1, 20- 1.0	1- 1.5, 1- 1.4, 1- 1.3, 1- 1.2, 1- 1.1, 22- 1.0	1- 1.5, 1- 1.4, 1- 1.3, 1- 1.2, 1- 1.1, 24- 1.0
Dimensions	10.8x8.3	10.7x8.5	11x8.9	11.8x9.5	12.2x9.8	13x10.8
Bail ID	3x1.75	3x1.75	3x1.75	3x1.75	3x1.75	3x1.75
dwt	0.77	0.82	0.76	0.81	0.84	0.87
14kt \$	\$269	\$279	\$265	\$279	\$285	\$295

matching earrings #84987



84990 Halo-Style Pendant with Accented Bail

ct tw	1/4	1/2	1	1 1/2
Center Stone	3.5	4.3	5.2	5.9
Accent Stones	10- 1.1, 3- 1.0	10- 1.6, 3- 1.0	10- 2.2, 4- 1.0	9- 2.6, 4- 1.0
Dimensions	11.75x6	13x7.75	16.75x10	18.5x11.5
Bail ID	3.5x1.6	3.5x1.6	3.5x1.6	3.5x1.6
dwt	0.32	0.52	0.82	1.07
14kt \$	\$155	\$205	\$285	\$345

matching earrings #84989



85303 Halo-Style Pendant with Plain Bail

ct tw	1/5	1/3
Center Stone	3.4	4.0
Accent Stones	13- 1.1	15- 1.1
Dimensions	15x6.75	15.75x7.5
Bail ID	2.5x2	2.5x2
dwt	0.58	0.62
14kt \$	\$225	\$229

matching earrings #85303



85304 Halo-Style Pendant with Accented Bail

ct tw	1/2	1	1 1/2	1 1/2
Center Stone	4.5	5.0	6.0	6.5
Accent Stones	15- 1.25, 3- 1.0	16- 1.25, 3- 1.0	19- 1.25, 3- 1.0	20- 1.25, 3- 1.0
Dimensions	16.75x8.25	17.25x9	18.75x10.25	19.25x10.75
Bail ID	2.3x1.5	2.3x1.5	2.3x1.5	2.3x1.5
dwt	0.71	0.77	0.91	0.94
14kt \$	\$255	\$269	\$305	\$309

matching earrings #28308, FJ #85304



85305 Cluster Pendant

ct tw	1/2	5/8
Center Stone	3.4	4.1
Accent Stones	16- 0.9	16- 1.0
Dimensions	16.75x7.25	16.25x8
Bail ID	2.5x2.1	2.5x2.1
dwt	0.56	0.66
14kt \$	\$219	\$245

matching earrings #85303



85090 14kt
1- 6.5, 1/4 ct tw (1- 2.4, 2- 2.1, 2- 2.0
2- 1.7, 2- 1.5, 2- 1.3, 2- 1.1, 1- 1.0)
9.5 width, bail ID 3.5x2
\$245, 0.67 dwt



85090 14kt
1- 8.0, 3/8 ct tw (1- 2.6, 2- 2.3, 2- 2.0
2- 1.8, 2- 1.6, 2- 1.5, 2- 1.3, 2- 1.1, 1- 1.0)
11.25 width, bail ID 3.5x2
\$275, 0.80 dwt



85090 14kt
1- 10.0, 1/2 ct tw (1- 2.9, 2- 2.6, 2- 2.3
2- 2.0, 2- 1.8, 2- 1.6, 2- 1.4, 2- 1.3, 2- 1.1, 1- 1.0)
13.0 width, bail ID 3.5x2
\$319, 0.98 dwt



84991 Cluster Pendant with Articulated Bail



ct tw	1/2	1/2	5/8	3/4	1	1 1/4
Center Stone	4.1	4.4	4.6	5.2	5.8	6.5
Accent Stones	1-1.5, 1-1.4, 1-1.3, 1-1.2, 1-1.1, 35-1.0	1-1.5, 1-1.4, 1-1.3, 1-1.2, 1-1.1, 36-1.0	1-1.5, 1-1.4, 1-1.3, 1-1.2, 1-1.1, 37-1.0	1-1.5, 1-1.4, 1-1.3, 1-1.2, 1-1.1, 41-1.0	1-1.5, 1-1.4, 1-1.3, 1-1.2, 1-1.0, 44-1.0	1-1.5, 1-1.4, 1-1.3, 1-1.2, 1-1.1, 47-1.0
Dimensions	9.4x7.7	9.8x7.9	8.1x10.1	10.1x8.7	16.2x9.5	11.9x10.3
Bail ID	3x1.75	3x1.75	3x1.75	3x1.75	3x1.75	3x1.75
dwt	0.57	0.56	0.57	0.57	0.66	0.67
14kt \$	\$219	\$215	\$219	\$219	\$239	\$245

matching earrings #84993, FJ #68601



8218 14kt
1/3 ct tw (8- 1.7)
16x9, bail ID 2.0
\$239, 0.68 dwt



8316 14kt
1/2 ct tw (9- 2.5)
13.5x10, bail ID 1.75
\$245, 0.66 dwt



8216 14kt
1/2 ct tw (1- 3.4, 8- 2.2)
19x10, bail ID 2.0
\$285, 0.83 dwt



8215 14kt
3/4 ct tw (1- 3.8, 8- 2.4)
19x11, bail ID 1.75
\$305, 0.92 dwt



8217 14kt
3/4 ct tw (1- 4.1, 8- 2.7)
20x12, bail ID 1.75
\$325, 1.00 dwt



8316 14kt
3/10 ct tw (9- 3.0)
16.5x11.5, bail ID 1.5
\$305, 1.02 dwt



592-9 13-Stone Cluster Pendant

ct tw	1/4	1/3	3/8	1/2	5/8	3/4	1	1 1/4	1 1/2
Center Stone	3.0	3.4	4.1	4.5	4.8	5.2	5.4	5.8	6.5
Accent Stones	12- 1.3	12- 1.3	12- 1.5	12- 1.5	12- 1.7	12- 1.7	12- 2.0	12- 2.2	12- 2.2
Bail ID	2.5x2	2.5x2	3.25x2.5	2.25x2	3x2.5	3x2.5	3x2.9	4.25x3.5	3x2.9
dwt	0.96	1.24	1.48	1.63	1.88	2.33	0.63	3.37	3.02
14kt \$	\$85	\$95	\$135	\$145	\$185	\$189	\$225	\$289	\$299



1504 11-Stone Cluster Pendant

Center Stone	6.0	8.0	9.0	11.0
Accent Stones	10- 2.0	13- 2.0	14- 2.2	16- 2.2
Bail ID	3.5	3.25	3.5	3.5
dwt	0.80	1.17	1.40	1.94
14kt \$	\$199	\$269	\$305	\$409



596-9 11-Stone Cluster Pendant

ct tw	1/5	1/4	1/2	5/8	3/4	1	1 1/4	1 3/4	2 1/4
Center Stone	3.0	3.0	3.4	4.1	5.2	4.5	5.8	6.5	7.0
Accent Stones	10- 1.3	10- 1.7	10- 2.2	10- 2.4	10- 2.0	10- 3.0	10- 2.4	10- 2.7	10- 3.0
Bail ID	2.5x2	2.5x2	2.25x2	3x2.5	5x2.1	3x2.9	2.5x2.1	4.5x3.4	4.5x3.4
dwt	0.29	0.33	0.36	0.48	0.69	0.69	0.80	1.11	1.44
14kt \$	\$75	\$85	\$89	\$115	\$165	\$165	\$185	\$255	\$315

Most items available in any metal quality.

Suggested retail prices based on \$1,600 gold, \$1,700 platinum and \$30 silver. Visit stuller.com for our complete product selections and current pricing. | 695



594-9 7-Stone Cluster Pendant

ct tw	0.08	1/8	1/4	1/2	3/4	1	
Center Stone	1.7	1.7	2.0	2.4	2.7	3.2	4.1
Accent Stones	6- 1.3	6- 1.5	6- 1.7	6- 1.7	6- 2.0	6- 2.4	6- 3.0
Bail ID	2.2x2	2.25x2	2.5x2	2.25x2	2.75x2.5	2.75x2.25	4x3.5
dwt	0.21	0.22	0.30	0.30	0.38	0.55	0.76
14kt \$	\$59	\$59	\$79	\$79	\$95	\$135	\$175



591-9 7-Stone Cluster Pendant

ct tw	1/8	1/5	1/4	1/3	1/2	3/4	7/8	1
mm Stone Size	7- 17	7- 2.0	7- 2.2	7- 2.4	7- 2.5	7- 3.0	7- 3.2	7- 3.4
Bail ID	2.25x2	2.5x2	2.5x2	2.75x2.25	3.25x2.5	3.25x2.5	4.25x3.5	4.25x3.5
dwt	0.21	0.23	0.28	0.39	0.44	0.56	0.72	0.77
14kt \$	\$59	\$65	\$75	\$95	\$109	\$135	\$169	\$179



595-9 9-Stone Cluster Pendant

ct tw	1/4	1/2	5/8	1	1 1/2	1 3/4	2 1/4	3
Center Stone	3.0	3.4	4.1	4.5	5.2	5.4	5.8	6.5
Accent Stones	8- 1.7	8- 2.2	8- 2.4	8- 3.0	8- 3.2	8- 3.4	8- 3.8	8- 4.1
Bail ID	2.5x2	2.25x2	3x2.5	4.5x3.5	3.25x2.5	4.25x3.5	4.25x3.5	4.25x3.5
dwt	0.40	0.50	0.63	0.95	1.09	1.18	1.61	2.08
14kt \$	\$99	\$119	\$149	\$219	\$249	\$269	\$349	\$435



1505 7-Stone Cluster Pendant

ct tw	1/3	1/2	5/8	1	1 1/4	2 1/2
Center Stone	3.2	3.4	4.1	4.4	5.2	5.2
Accent Stones	6- 2.0	6- 2.4	6- 2.7	6- 3.2	6- 3.8	6- 4.4
Bail ID	2.0	2.0	2.25	2.5	2.5	2.5
dwt	0.43	0.52	0.69	0.86	1.16	1.24
14kt \$	\$105	\$125	\$165	\$199	\$265	\$285



83754 14kt
 1/2 ct tw (1- 2.7, 1- 2.4
 6- 2.2, 6- 1.7), 17x7.75
 bail ID 2.75x1.75
 \$269, 0.78 dwt
 matching earrings #83737



80466
 1 ct tw (1- 4.2, 12- 2.2
 8- 1.7), 21.5x13.5
 bail ID 2.8x4
 \$469, 1.58 dwt



21504 14kt
 1/3 ct tw (1- 3.4, 2- 2.9)
 24x9.25
 \$345, 1.95 dwt



20096 14kt
 3/4 ct tw (1- 4.6, 2- 3.8)
 20.75x6.75
 \$279, 1.40 dwt



81617 3-Stone Pendant

ct tw	1/2	3/4	1
Accent Stone	3- 3.4	3- 4.1	3- 4.4
Dimensions	8.25x29	9.5x32.75	10.75x27
dwt	1.210.57	1.58	1.11
14kt \$	\$375	\$469	\$599



20989 3-Stone Necklace Center



ct tw	1/4	1/3	1/2	3/4	1	1 1/4	1 1/2	2
Accent Stone	1- 3.0, 2- 2.5	1- 3.9, 2- 2.9	1- 4.1, 2- 3.3	1- 4.6, 2- 3.8	1- 5.0, 2- 4.1	1- 5.4, 2- 4.4	1- 5.7, 2- 4.8	1- 6.3, 2- 5.3
Dimensions	9.25x5.5	12x4.25	13x5.5	14.25x6.5	15x6.75	18.25x7	17.5x7.25	18.25x9
dwt	0.37	0.42	0.56	0.63	0.68	0.73	0.96	0.90
14kt \$	\$75	\$85	\$109	\$125	\$135	\$145	\$185	\$175



22133 3-Stone Pendant Slide



ct tw	1/3	1/2	5/8	3/4	1	1 1/2
mm Stone Size	3- 3.0	3- 3.4	3- 3.8	3- 4.1	3- 4.4	3- 5.2
Dimensions	6.75x7.25	7.5x8	8.5x9.25	9x9.75	10x10.5	11.5x12.25
Bail ID	1.5	1.5	1.5	1.5	1.5	1.8
dwt	0.55	0.67	0.89	1.04	1.18	1.71
14kt \$	\$109	\$135	\$175	\$205	\$229	\$315

matching earrings #22132
 dangle #22134



22216 14kt
 1/2 ct tw (1- 4.1, 1- 3.4, 1- 3.0)
 12.5x3.75, bail ID 1.0
 \$175, 0.51 dwt
 matching earrings #22228



22216 14kt
 3/4 ct tw (1- 4.4, 1- 4.1, 1- 3.4)
 13.75x4.5, bail ID 1.0
 \$155, 0.77 dwt
 matching earrings #22228



22216 14kt
 3/10 ct tw (1- 5.2, 1- 4.1, 1- 3.8)
 15x5.25, bail ID 1.0
 \$169, 0.95 dwt
 matching earrings #22228



21624 3-Stone Pendant



ct tw	1/10	1/6	1/5	1/3	3/8	5/8	3/4
Accent Stones	1- 2.4, 1- 2.0	1- 2.7, 1- 2.4	1- 3.0, 1- 2.7	1- 3.4, 1- 3.0	1- 3.8, 1- 3.4	1- 4.1, 1- 3.8	1- 4.4, 1- 4.1
	1- 1.7	1- 2.0	1- 2.4	1- 2.7	1- 3.0	1- 3.4	1- 3.8
Dimensions	11.25x3.5	12.25x3.75	15.25x3.75	15.75x4.5	17x4.5	18.25x5	19x5
Bail ID	2.75x2.4	2.75x2.3	2.9x4	4.25x3	3x4	4.25x2.8	4x3
dwt	0.27	0.37	0.45	0.59	0.71	0.84	0.97
14kt \$	\$55	\$69	\$89	\$129	\$139	\$165	\$195

matching earrings #21623, FJ #62478

83640 3-Stone Pendant



ct tw	1/3	1/2	3/4	1
mm Stone Size	3- 3.0	3- 3.5	3- 4.1	3- 4.4
Dimensions	16x3.25	19x4	20x4.5	23x4.5
Bail ID	2.5x1.75	2.75x2	3.25x2.25	3.5x2.25
dwt	0.63	0.94	1.29	1.35
14kt \$	\$235	\$309	\$395	\$415

matching earrings #83639

22252 3-Stone Pendant



ct tw	1/5	1/2	3/4	1
mm Stone Size	3- 2.7	3- 3.4	3- 4.1	3- 4.4
Dimensions	15.75x5	20x6.5	21x7.25	21.5x7.25
Bail ID	1.75x5	2x2.5	1.75x2.5	1.5x5
dwt	0.56	1.30	1.30	1.42
14kt \$	\$109	\$249	\$249	\$259

21613 3-Stone Line Pendant



ct tw	1/4	1/2	3/4	1
mm Stone Size	3-2.8	3- 3.5	3- 4.1	3- 4.4
Dimensions	23.75x3	27x3.75	30x4.25	32x4.5
Bail ID	1.5	1.5	2.0	3x2.5
dwt	0.77	0.99	1.16	1.33
14kt \$	\$149	\$195	\$225	\$255

matching earrings #21612

22035 3-Stone Graduated Pendant



ct tw	1/4	1/2	3/4	1
Accent Stones	1- 3.2, 1- 2.7, 1- 2.4	1- 4.0, 1- 3.4, 1- 3.0	1- 4.4, 1- 4.1, 1- 3.4	1- 5.2, 1- 4.2, 1- 3.8
Dimensions	23.75x3.25	27x4.25	29.5x4.5	32.25x5.25
Bail ID	3x1.75	1.7x2.75	3x2.25	3x2.25
dwt	0.77	1.00	1.11	1.35
14kt \$	\$149	\$195	\$215	\$259

matching earrings #22034, FJ #62488



22253 3-Stone Pendant



ct tw	1/4	1/3	1/2	3/4	1
mm Stone Size	1- 3.2, 1- 2.7, 1- 2.4	1- 3.4, 1- 3.0, 1- 2.7	1- 4.1, 1- 3.4, 1- 3.0	1- 4.4, 1- 4.1, 1- 3.4	1- 5.2, 1- 4.1, 1- 3.8
Overall Size	12.25x3.25	13x3.25	14.25x4	20x6.5	20x6.5
Chain Opening ID	1x1	1x1	1.25x1.25	1.25x1.25	1.25x2
dwt	0.54	0.52	0.69	0.87	0.87
14kt \$	\$109	\$105	\$135	\$169	\$185

matching earrings #22251, FJ #64248



22254 3-Stone Pendant Slide



ct tw	1/5	1/2	3/4	1
mm Stone Size	3- 2.7	3- 3.4	3- 4.1	3- 4.4
Overall Size	11.25x2.75	14.25x4	16x4.25	17x4.5
Chain Opening ID	1.25x2	1.25x2	1.25x2	1.25x2
dwt	0.47	0.77	1.04	1.08
14kt \$	\$95	\$149	\$199	\$209

matching earrings #22250



22217 3-Stone Pendant Slide

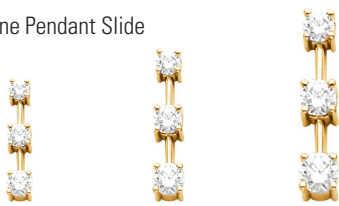


ct tw	1/2	3/4	1
mm Stone Size	3- 3.4	3- 4.1	3- 4.4
Overall Size	12.25x3.75	14x4.25	15x4.5
Chain Opening ID	1.1	1.1	1.3
dwt	0.63	0.76	0.82
14kt \$	\$185	\$209	\$209

matching earrings #22229



22218 3-Stone Pendant Slide

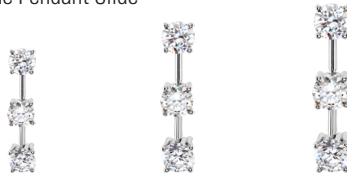


ct tw	1/2	3/4	1
mm Stone Size	1- 4.1, 1- 3.4 1- 3.0	1- 4.4, 1- 4.1 1- 3.4	1- 5.2, 1- 4.1 1- 3.8
Overall Size	17.95x4	21x4.25	22.25x5.25
Chain Opening ID	1.0	1.1	1.1
dwt	0.85	0.93	1.06
14kt \$	\$225	\$245	\$265

matching earrings #22230



22219 3-Stone Pendant Slide



ct tw	1/2	3/4	1
mm Stone Size	3- 3.4	3- 4.1	3- 4.4
Overall Size	19.5x3.75	21.25x4.25	22x4.5
Chain Opening ID	1.25	1.25	1.25
dwt	0.85	0.96	1.07
14kt \$	\$225	\$249	\$259

matching earrings #22231



81887 3-Stone Pendant Slide



ct tw	1/2	3/4	1
mm Stone Size	3- 3.4	3- 4.1	3- 4.4
Overall Size	10.75x6.25	12.5x7.5	13.5x7.75
Chain Opening ID	1.25x2.25	1.25x2.75	2x3.25
dwt	1.53	2.47	2.87
14kt \$	\$475	\$695	\$789

matching earrings #81892



82560 14kt
1/3 ct tw (3- 3.0)
19.5x5, bail ID 1.75x1.25
\$415, 1.36 dwt
FJ #63787

PENDANTS



ROUND



22255 3-Stone Curved Bar Pendant Slide



ct tw	1/4	1/3	1/2	3/4	1
mm Stone Size	1- 3.2, 1- 2.7, 1- 2.4	1- 3.4, 1- 3.0, 1- 2.7	1- 4.1, 1- 3.4, 1- 3.0	1- 4.4, 1- 4.1, 1- 3.4	1- 5.2, 1- 4.1, 1- 3.8
Dimensions	26.5x3.5	29.25x3.75	33.25x4.25	40x4.65	40x5
Bail ID	1.5x2.5	1.5x2.75	1.75x3.25	2x4	2x4
dwt	0.70	0.84	1.07	1.50	1.65
14kt \$	\$139	\$165	\$205	\$275	\$305

matching earrings #22256



81622 3-Stone Pendant



ct tw	1/4	1/2	3/4
mm Stone Size	1-3.0, 1-2.8, 1-2.7	1-3.8, 1-3.4, 1-3.2	1-4.4, 1-4.1, 1-3.8
Dimensions	15.5x11.5	20x15	21x14.5
dwt	0.77	2.51	2.73
14kt \$	\$449	\$699	\$755

matching earrings #81897, FJ #61692



81619 3-Stone Pendant



ct tw	1/4	1/3	1/2	3/4	1
mm Stone Size	3- 2.8	3- 3.0	3- 3.4	3- 4.0	3- 4.4
Dimensions	18x3.5	19x3.5	22.5x4	24x4.5	25.75x4.75
Bail ID	1x2	1x2	1.5x3.75	1.3x3.75	1.5x3.75
dwt	0.84	1.02	1.40	1.74	2.24
14kt \$	\$285	\$329	\$425	\$509	\$635

matching earrings #81620



83287 14kt
5/8 ct tw (3- 5x3)
47.25x9
bail ID 4.25x1.75
\$679, 2.42 dwt



81886 14kt
1/4 ct tw (3- 2.8)
18.75x5, bail ID 1.2x3
\$499, 1.70 dwt



81886 14kt
3/4 ct tw (3- 4.1)
26.75x7, bail ID 1.75x5
\$975, 3.60 dwt



82093 14kt
1/8 ct tw (3- 2.2)
26.5x4, bail ID 1.75x5
\$445, 1.48 dwt



81623 14kt
1 ct tw (3- 4.4), 17.0 width
cow hitch assembly
\$525, 1.80 dwt



83082 14kt
3/8 ct tw (1- 4.1, 1- 3.2
1- 2.5), 25.5x10.75
bail ID 6.5x2.75
\$479, 1.62 dwt



81884 14kt
3/4 ct tw (3- 4.1)
21.5x10.5
bail ID 1.5x1.25
\$755, 2.71 dwt



81882 14kt
3/4 ct tw (3- 4.1)
28x13
bail ID 1.75x2.25
\$629, 2.23 dwt



83096 14kt
1/2 ct tw (1- 3.0, 1- 2.5, 1- 2.0)
24x11
bail ID 1.25x1.5
\$535, 1.85 dwt



84080 Journey Pendant



ct tw	1/2	3/4	1
mm Stone Size	1- 3.5, 1- 3.1, 1- 2.7, 1- 2.4 1- 2.1, 1- 1.9, 1- 1.8	1- 4.1, 1- 3.6, 1- 3.2, 1- 2.8 1- 2.5, 1- 2.2, 1- 2.0	1- 4.4, 1- 4.0, 1- 3.5, 1- 3.0 1- 2.7, 1- 2.4, 1- 2.2
Dimensions	21.25x4	24.25x4.75	26x5.25
Bail ID	3x1	3.75x1	4.25x1.75
dwt	0.48	0.61	0.78
14kt \$	\$195	\$229	\$269

matching earrings #84081, FJ #67724



83591 Journey Pendant



ct tw	1	1 1/2	2
mm Stone Size	1- 5.8, 1- 3.5, 1- 2.4, 1- 2.2	1- 6.5, 1- 4.2, 1- 3.3, 1- 2.7	1- 7.2, 1- 4.8, 1- 3.8, 1- 3.0
Dimensions	23x5.5	25.25x6.25	27.5x7
Bail ID	4x2.5	4x2.5	4x2.5
dwt	0.62	0.67	0.58
14kt \$	\$235	\$245	\$305

matching earrings #83590, FJ #65307



84086 Journey Pendant



ct tw	1/2	3/4	1	1 1/2	2	2 1/2
mm Stone Size	1- 3.2, 1- 3.0, 1- 2.7 1- 2.5, 1- 2.3, 1- 2.1 1- 1.9, 1- 1.7, 1- 1.6, 1- 1.5	1- 3.6, 1- 3.4, 1- 3.1, 1- 2.8 1- 2.6, 1- 2.4, 1- 2.2 1- 2.0, 1- 1.8, 1- 1.7	1- 3.9, 1- 3.6, 1- 3.3 1- 3.1, 1- 2.9, 1- 2.7, 1- 2.5 1- 2.3, 1- 2.1, 1- 2.0	1- 4.3, 1- 4.1, 1- 3.9 1- 3.6, 1- 3.3, 1- 2.9 1- 2.7, 1- 2.6, 1- 2.5	1- 4.6, 1- 4.4, 1- 4.2 1- 4.0, 1- 3.7, 1- 3.4, 1- 3.2 1- 3.1, 1- 2.9, 1- 2.7	1- 4.9, 1- 4.7, 1- 4.4 1- 4.2, 1- 4.0, 1- 3.8 1- 3.6, 1- 3.4, 1- 3.3, 1- 3.2
Dimensions	30x4.25	30.25x4.75	33.5x5	38.25x5.75	41x6.25	45x6.25
Bail ID	0.9	2x1	4.8x1	5.3x1.5	5x1.2	5.5x1.4
dwt	0.58	0.77	0.96	1.17	1.14	1.61
14kt \$	\$219	\$269	\$315	\$369	\$429	\$479

PENDANTS



84115 Journey
Pendant for Diamonds



ct tw	1/2	3/4	1
mm Stone Size	1- 3.5, 1- 3.1, 1- 2.7 1- 2.4, 1- 2.1 1- 1.9, 1- 1.8	1- 4.0, 1- 3.6, 1- 3.2 1- 2.8, 1- 2.5 1- 2.2, 1- 2.0	1- 4.4, 1- 4.0, 1- 3.5 1- 3.0, 1- 2.7 1- 2.4, 1- 2.2
Dimensions	34x6	42x4.75	47.25x8
Bail ID	5x2	5x1.75	4x1.75
dwt	1.07	1.45	1.67
14kt \$	\$345	\$435	\$495

84119 Journey
Pendant for Diamonds
two-tone version #84291



ct tw	1/2	3/4
mm Stone Size	1- 3.5, 1- 3.1, 1- 2.7 1- 2.4, 1- 2.1 1- 1.9, 1- 1.8	1- 4.1, 1- 3.6, 1- 3.2 1- 2.8, 1- 2.5 1- 2.2, 1- 2.0
Dimensions	35.25x6.75	40.5x7.75
Bail ID	5x2.25	5x2.25
dwt	1.66	2.15
14kt \$	\$489	\$609



84116 14kt
1/2 ct tw (1- 3.2, 1- 3.0, 1- 2.7, 1- 2.5
1- 2.3, 1- 2.1, 1- 1.9, 1- 1.7, 1- 1.6, 1- 1.5)
42.5x7.5, bail ID 4.5x1.75
\$515, 1.76 dwt

84116 14kt
3/4 ct tw (1- 3.6, 1- 3.4, 1- 3.1, 1- 2.8, 1- 2.6
1- 2.4, 1- 2.2, 1- 2.0, 1- 1.8, 1- 1.7)
50.75x8.25, bail ID 5x1.5
\$639, 2.27 dwt

84116 14kt
1 ct tw (1- 3.9, 1- 3.6, 1- 3.3, 1- 3.1, 1- 2.9
1- 2.7, 1- 2.5, 1- 2.3, 1- 2.1, 1- 2.0)
51.5x9.75, bail ID 4x1.75
\$745, 2.69 dwt



84120 14kt
1/2 ct tw (1- 2.6, 1- 2.5, 1- 2.4, 1- 2.3, 1- 2.2, 1- 2.1
1- 2.0, 2- 1.9, 2- 1.8, 2- 1.7)
50.25x8, bail ID 7x2.5
\$609, 2.14 dwt

84120 14kt
3/4 ct tw (1- 3.4, 1- 3.2, 1- 3.0, 1- 2.8, 1- 2.6
1- 2.4, 1- 2.2, 2- 2.0, 2- 1.8, 2- 1.6)
50.25x8, bail ID 7x2.5
\$825, 3.01 dwt

84120 14kt
1 ct tw (1- 3.6, 1- 3.4, 1- 3.2, 1- 3.0, 1- 2.8, 1- 2.7
1- 2.5, 1- 2.4, 1- 2.3, 1- 2.2, 1- 2.1, 1- 2.0, 1- 9.0)
50.25x8, bail ID 7x2.5
\$1,045, 3.89 dwt



84113 14kt
1/2 ct tw (1- 3.2, 1- 3.0, 1- 2.7, 1- 2.5, 1- 2.3
1- 2.1, 1- 1.9, 1- 1.7, 1- 1.6, 1- 1.5)
42.5x7.5, bail ID 4.5x1.75
\$519, 1.76 dwt
two-tone version #84292



84113 14kt
3/4 ct tw (1- 3.6, 1- 3.4, 1- 3.1, 1- 2.8, 1- 2.6
1- 2.4, 1- 2.2, 1- 2.0, 1- 1.8, 1- 1.7)
50.75x8.25, bail ID 5x1.5
\$595, 2.27 dwt
two-tone version #84292



84113 14kt
1 ct tw (1- 3.9, 1- 3.6, 1- 3.3, 1- 3.1, 1- 2.9
1- 2.7, 1- 2.5, 1- 2.3, 1- 2.1, 1- 2.0)
51.5x9.75, bail ID 4x1.75
\$1,095, 2.69 dwt
two-tone version #84292



84111 14kt
 ¾ ct tw (1- 3.5, 1- 3.1, 1- 2.7, 1- 2.4, 1- 2.1
 1- 1.9), 55.75x7.5, bail ID 2.5x1.5
 \$1,005, 3.74 dwt

84111 14kt
 1 ct tw (1- 3.6, 1- 3.2, 1- 2.8, 1- 2.5, 1- 2.2
 1- 2.0), 69.75x10, bail ID 3.25x2
 \$1,229, 4.64 dwt



84110 14kt
 ½ ct tw (1- 3.3, 1- 3.1, 1- 2.9, 1- 2.8, 1- 2.6)
 20x6.75, bail ID 2x1.75, \$479, 1.62 dwt

84110 14kt
 ¾ ct tw (1- 3.9, 1- 3.6, 1- 3.3, 1- 3.1, 1- 3.0)
 26x8, bail ID 2x1.75, \$555, 1.93 dwt

84110 14kt
 1 ct tw (1- 4.2, 1- 3.9, 1- 3.6, 1- 3.4, 1- 3.2)
 26.25x8.5, bail ID 1.75x1.5, \$525, 1.80 dwt



84118 14kt
 ½ ct tw (1- 3.5, 1- 3.1, 1- 2.7, 1- 2.4
 1- 2.1, 1- 1.9, 1- 1.8), 48x9.25
 bail ID 5x2.25, \$735, 2.65 dwt

84118 14kt
 ¾ ct tw (1- 4.0, 1- 3.6, 1- 3.2, 1- 2.8
 1- 2.5, 1- 2.2, 1- 2.0), 56.75x9.5
 bail ID 4.75x2, \$1,019, 3.80 dwt

84118 14kt
 1 ct tw (1- 4.4, 1- 4.0, 1- 3.5, 1- 3.0
 1- 2.7, 1- 2.4, 1- 2.2), 59.5x11
 bail ID 4x2, \$1,105, 4.13 dwt



84112 14kt
 ½ ct tw (1- 2.6, 1- 2.5, 1- 2.4, 1- 2.3, 1- 2.2, 2- 2.0
 2- 1.9, 2- 1.8, 2- 1.7), 36.75x8.25, bail ID 4x2
 \$395, 1.28 dwt
 two-tone version #84294

84112 14kt
 ¾ ct tw (1- 3.4, 1- 3.2, 1- 3.0, 1- 2.8, 1- 2.6, 1- 2.4
 1- 2.2, 2- 2.0, 2- 1.8, 2- 1.6), 43x12.75,
 bail ID 5.5x2.25, \$475, 1.59 dwt
 two-tone version #84294

84112 14kt
 1 ct tw (1- 3.6, 1- 3.4, 1- 3.2, 1- 3.0, 1- 2.8, 1- 2.7
 1- 2.5, 1- 2.4, 1- 2.3, 1- 2.2, 1- 2.1, 1- 2.0, 1- 9.0)
 44x9.75, bail ID 4.25x1.25, \$679, 2.42 dwt
 two-tone version #84294



84121 14kt
 ½ ct tw (1- 3.25, 1- 3.0, 1- 2.75, 1- 2.5
 1- 2.25, 2- 2.0, 1- 1.75, 2- 1.5)
 32.5x9.25, bail ID 3.75x1.75
 \$465, 1.55 dwt

84121 14kt
 ¾ ct tw (1- 3.6, 1- 3.4, 1- 3.1, 1- 2.8
 1- 2.6, 1- 2.4, 1- 2.2, 1- 2.0, 1- 1.8, 1- 1.7)
 38.5x11.75, bail ID 4x2
 \$599, 2.10 dwt



84122 14kt
 ½ ct tw (1- 3.2, 1- 3.0, 1- 2.7, 1- 2.5, 1- 2.3
 1- 2.1, 1- 1.9, 1- 1.7, 1- 1.6, 1- 1.5)
 32.5x13, bail ID 3.5x1.5
 \$455, 1.52 dwt

84122 14kt
 ¾ ct tw (1- 3.6, 1- 3.4, 1- 3.1, 1- 2.8, 1- 2.6
 1- 2.4, 1- 2.2, 1- 2.0, 1- 1.8, 1- 1.7)
 39x16, bail ID 2.5x1.25
 \$505, 1.73 dwt

PENDANTS



ROUND



83546 14kt
 ½ ct tw (1- 3.8, 1- 3.2
 1- 2.8, 1- 2.4, 1- 2.2)
 33.25x3.75, bail ID 2.75x2.1
 \$205, 1.06 dwt
 matching earrings #83547



83546 14kt
 1 ct tw (1- 4.4, 1- 4.0
 1- 3.6, 1- 3.2, 1- 2.9)
 36.25x4, bail ID 3x2.1
 \$249, 1.30 dwt
 matching earrings #83547



83666 14kt
 ½ ct tw (1- 3.5x3.5
 1- 2.75x2.75, 1- 2.25x2.25
 1- 2x2), 45.75x11.75
 bail ID 3x1.75
 \$569, 1.99 dwt
 matching earrings #83687
 FJ #65397



83581 14kt
 ¼ ct tw (1- 3.0, 1- 2.5
 1- 2.2, 1- 2.0)
 31.5x7, bail ID 2.5x1.75
 \$309, 0.94 dwt
 matching earrings #83580
 FJ #65399



83589 14kt
 ½ ct tw (1- 4.1, 1- 3.5
 1- 2.7, 1- 2.5)
 33.75x5.75, bail ID 3x1.75
 \$325, 1.00 dwt
 matching earrings #83588
 FJ #65401



83548 14kt
 ½ ct tw (1- 3.8, 1- 3.2
 1- 2.8, 1- 2.4, 1- 2.2)
 25x3.75, bail ID 3.25x2
 \$139, 0.71 dwt
 matching earrings #83549



83548 14kt
 1 ct tw (1- 4.4, 1- 4.0
 1- 3.6, 1- 3.2, 1- 2.9)
 28.75x4.5, bail ID 3.75x2.4
 \$195, 1.01 dwt
 matching earrings #83549
 FJ #65432



83548 14kt
 1½ ct tw (1- 5.0, 1- 4.6
 1- 4.2, 1- 3.8, 1- 3.3)
 32x5, bail ID 4x2.5
 \$245, 1.26 dwt
 matching earrings #83549



83548 14kt
 2 ct tw (1- 5.5, 1- 5.1
 1- 4.7, 1- 4.3, 1- 3.9)
 34.75x5.5, bail ID 4x2.5
 \$275, 1.51 dwt
 matching earrings #83549



SQUARE



83667 14kt
 ½ ct tw (1- 3.5x3.5, 1- 2.75x2.75
 1- 2.25x2.25, 1- 2x2)
 42x10, bail ID 4x3
 \$429, 1.42 dwt
 matching earrings #83688
 FJ #65398



83667 14kt
 1 ct tw (1- 4.5x4.5, 1- 3.5x3.5
 1- 2.75x2.75, 1- 2.5x2.5)
 42x10, bail ID 4x3
 \$639, 2.26 dwt
 matching earrings #83688



83667 14kt
 1½ ct tw (1- 5x5, 1- 4x4
 1- 3.5x3.5, 1- 3x3)
 50.75x13.25, bail ID 4x3
 \$809, 2.95 dwt
 matching earrings #83688

ROUND



PENDANTS

Neckwear | Round



84128 14kt
 $\frac{1}{2}$ ct tw (1- 3.6, 1- 3.2
 1- 2.9, 1- 2.6, 1- 2.4)
 29.25x10.5
 \$505, 1.73 dwt



83598 14kt
 $\frac{7}{8}$ ct tw (1- 4.4, 1- 4.0
 1- 3.5, 1- 2.75, 1- 2.5)
 30.5x6, bail ID 4x2.25
 \$525, 1.80 dwt



84100 14kt
 $2\frac{3}{4}$ ct tw (1- 5x5, 1- 4.5x4.5
 1- 3.5x3.5, 1- 3x3
 1- 2.5x2.5, 6- 1.2)
 32x8, bail ID 2.5x1.75
 \$395, 1.27 dwt



82510 14kt
 $\frac{1}{2}$ ct tw (1- 4.5, 12- 1.5)
 31.25x5
 bail ID 5x2.25
 \$459, 1.54 dwt



82065 14kt
 $\frac{1}{10}$ ct (1- 3.0)
 31.75x5, bail ID 3.75
 \$589, 2.07 dwt



82177 14kt
 $\frac{1}{2}$ ct tw (4- 2.5
 4- 2.0, 4- 1.7, 4- 1.5)
 36.25x6, bail ID 4x2
 \$789, 2.87 dwt



82063 14kt
 $\frac{1}{4}$ ct tw (17- 1.5)
 37x6.25
 bail ID 2.75x2
 \$715, 2.57 dwt



82499 14kt
 $\frac{1}{4}$ ct tw (15- 1.3
 12- 1.2, 6- 1.0)
 44.75x2.75
 bail ID 5x2.75
 \$355, 1.12 dwt



82060 14kt
 $\frac{7}{8}$ ct tw (13- 2.0)
 36x3.75
 bail ID 1.2
 \$729, 2.62 dwt



82211 14kt
 $\frac{1}{10}$ ct tw (6- 3.4)
 38x6.5
 bail ID 2.25x1.25
 \$735, 2.64 dwt



22393 14kt
 $\frac{1}{8}$ ct tw (9- 1.5)
 21.25x2.75
 bail ID 1.75x1.5
 \$195, 0.99 dwt



83183 14kt
 $\frac{1}{3}$ ct tw (2- 3.4, 1- 2.5)
 58.5x27
 bail ID 4.75x1.75
 \$965, 3.56 dwt



22234 14kt
 $\frac{3}{8}$ ct tw (44- 1.3)
 74.75x2.75
 bail ID 8x1.9
 \$485, 2.75 dwt



84151 14kt
 $3\frac{3}{8}$ ct tw (2- 4.1, 2- 3.7, 2- 3.3, 3- 3.0
 2- 2.7, 4- 2.2, 8- 2.0, 2- 1.7, 22- 1.5
 100- 1.3, 6- 1.2), 96.6x16
 \$2,419, 9.54 dwt

Most items available in any metal quality.

Suggested retail prices based on \$1,600 gold, \$1,700 platinum and \$30 silver.
 Visit stuller.com for our complete product selections and current pricing. | 705

PENDANTS



ROUND



84981 14kt
 1/2 ct tw (36- 1.1)
 15.0 OD
 bail ID 3.25x1.1
 \$449, 1.50 dwt



84395 14kt
 3/4 ct tw (150- 1.0)
 25.75 OD
 cow hitch assembly
 \$629, 2.22 dwt



83665 14kt
 1/2 ct tw (1- 3.5, 1- 3.0
 1- 2.5, 1- 2.0, 2- 1.7
 4- 1.5, 2- 1.3)
 24x25.5, bail ID 3.75x2
 \$785, 2.85 dwt
 FJ #65404



83636 14kt
 1/3 ct tw (1- 3.0, 1- 2.7
 1- 2.5, 1- 2.2, 1- 2.0
 1- 1.5), 23.25 OD
 cow hitch assembly
 \$1,129, 4.24 dwt
 FJ #65394



83676 14kt
 1/6 ct tw (29- 1.0)
 12.25 OD
 bail ID 2.25x1.5
 \$229, 0.61 dwt
 matching dangle #83747



83676 14kt
 1/5 ct tw (29- 1.1)
 13.25 OD
 bail ID 2.5x1.5
 \$255, 0.72 dwt
 matching dangle #83747



83676 14kt
 1/2 ct tw (32-1.5)
 18.75 OD
 bail ID 4.75x1.5
 \$355, 1.13 dwt
 matching dangle #83747



83676 14kt
 1 ct tw (36-2.0)
 26.75 OD
 bail ID 5.5x1.5
 \$705, 2.52 dwt
 matching dangle #83747
 FJ #65480



83638 14kt
 1/5 ct tw (1- 2.7, 1- 2.2
 1- 1.7, 1- 1.5, 1- 1.12, 15- 1.0)
 15.25 OD
 cow hitch assembly
 \$209, 0.53 dwt
 FJ #65395



83638 14kt
 1/2 ct tw (1- 3.4, 1- 2.9
 1- 2.4, 1- 2.0, 1- 1.7, 15- 1.3)
 19.0 OD
 cow hitch assembly
 \$325, 1.01 dwt
 FJ #65395



83638 14kt
 1 ct tw (1- 4.4, 1- 3.7
 1- 3.0, 1- 2.4, 1- 2.0, 17- 1.7)
 24.0 OD
 cow hitch assembly
 \$535, 1.84 dwt



83638 14kt
 1 1/4 ct tw (1- 5.2, 1- 4.6
 1- 3.8, 1- 3.2, 1- 2.5, 16- 2.0)
 29.0 OD
 cow hitch assembly
 \$895, 3.29 dwt



83638 14kt
 3/4 ct tw (1- 6.0, 1- 5.4
 1- 4.8, 1- 4.2, 1- 3.6, 14- 2.7)
 35.5 OD
 cow hitch assembly
 \$1,169, 4.40 dwt



84123 14kt
 ½ ct tw (1- 3.5, 1- 3.0
 1- 2.75, 2- 2.5, 1- 2.25
 1- 2.0), 16.75 OD
 cow hitch assembly
 \$435, 1.44 dwt



84123 14kt
 ¾ ct tw (1- 3.6, 1- 3.4
 1- 3.2, 1- 3.0, 1- 2.8, 1- 2.6
 1- 2.4), 19.75 OD
 cow hitch assembly
 \$475, 1.60 dwt



84123 14kt
 1 ct tw (1- 3.9, 1- 3.7, 1- 3.5
 1- 3.3, 1- 3.1, 1- 2.9, 1- 2.8)
 21.0 OD
 cow hitch assembly
 \$655, 2.33 dwt



83141 14kt
 ⅓ ct, (1- 3.0)
 26.0 OD
 cow hitch assembly
 \$1,095, 4.10 dwt



84109 14kt
 ½ ct tw (1- 2.6, 1- 2.5
 1- 2.4, 1- 2.3, 1- 2.2, 1- 2.1
 1- 2.0, 2- 1.9, 2- 1.8, 2- 1.7)
 23.0 OD
 cow hitch assembly
 \$529, 1.82 dwt



84109 14kt
 ¾ ct tw (1- 3.4, 1- 3.2, 1- 3.0
 1- 2.8, 1- 2.6, 1- 2.4, 1- 2.3
 1- 2.2, 2- 2.0, 2- 1.8, 2- 1.6)
 26.0 OD
 cow hitch assembly
 \$915, 3.36 dwt



84109 14kt
 1 ct tw (1- 2.1, 1- 2.0
 1- 1.9, 2- 2.0, 2- 1.8, 2- 1.6)
 28.0 OD
 cow hitch assembly
 \$935, 3.44 dwt



84143 14kt
 ½ ct tw (1- 3.5, 1- 3.1, 1- 2.7
 1- 2.4, 1- 2.1, 1- 1.9, 1- 1.8)
 35.5 OD
 bail ID 2.75x1.5
 \$1,495, 5.71 dwt
 FJ #66661



84107 14kt
 ½ ct tw (1- 3.2, 1- 3.0
 1- 2.7, 1- 2.5, 1- 2.3, 1- 2.1
 1- 1.9, 1- 1.7, 1- 1.6, 1- 1.5)
 25.75 OD
 bail ID 1.25x1.25
 \$869, 6.64 dwt



84107 14kt
 ¾ ct tw (1- 3.6, 1- 3.4, 1- 3.1
 1- 2.8, 1- 2.6, 1- 2.4, 1- 2.2
 1- 2.0, 1- 1.8, 1- 1.7)
 30.0 OD
 bail ID 3x1.75
 \$1,405, 5.35 dwt



84107 14kt
 1 ct tw (1- 4.0, 1- 3.5
 1- 3.25, 2- 3.0, 1- 2.75
 1- 2.5, 1- 2.25, 2- 2.0)
 33.0 OD
 bail ID 2.5x2
 \$1,725, 3.19 dwt

PENDANTS



ROUND

84117 Pendant



ct tw	1/2	3/4	1
mm Stone Size	1-2.6, 1-2.5, 1-2.4	1-3.4, 1-3.2, 1-3.0	1-3.6, 1-3.4, 1-3.2
	1-2.3, 1-2.2, 1-2.1	1-2.8, 1-2.6	1-3.0, 1-2.8, 1-2.7
	1-2.0, 2-1.9, 2-1.8	1-2.4, 1-2.2, 2-2.0	1-2.5, 1-2.4, 1-2.3, 1-2.2
	2-1.7	2-1.8, 2-1.6	1-2.1, 1-2.0, 1-1.9
Dimensions	28x12.75	31.25x15.25	33.75x16.5
Bail ID	4.75x2.5	5.5x2.25	4.25x1.75
dwt	1.46	1.53	1.92
14kt \$	\$439	\$455	\$555



83816 14kt
1 ct tw (1- 3.4, 1- 3.2
1- 2.9, 1- 2.7, 1- 2.4, 1- 2.2
1- 2.0, 2.2- 1.7, 6- 1.5)
39x17.5
bail ID 3.75x2
\$779, 2.82 dwt



83117 14kt
.04 ct tw (4- 1.2, 2- 1.0)
33x11.25
bail ID 8x1.5
\$609, 2.15 dwt



83659 14kt
1/2 ct tw (1- 3.2, 1- 3.0
1- 2.4, 1- 2.0, 1- 1.7
2- 1.5), 30.75x10
bail ID 4.25x2.25
\$545, 2.00 dwt
FJ #65403



83308 14kt
1/2 ct tw (4- 2.0, 12- 1.7
5- 1.5, 7- 1.3, 5- 1.2)
25.75x17.75
bail ID 6.5x3.25
\$975, 3.60 dwt



83146 14kt
1/2 ct tw (24- 1.2)
27.5x14.75
bail ID 4.75x3
\$885, 3.24 dwt



84129 14kt
3/4 ct tw (1- 3.9, 1- 3.4, 1- 3.1
1- 2.8, 1- 2.5, 1- 2.2, 1- 2.0
1- 1.8, 1- 1.6, 1- 1.5)
22.25x14.5, bail ID 3.25x2
\$495, 1.69 dwt
two-tone version #84293



83153 14kt
1/2 ct tw (22- 1.0)
18x11.25
bail ID 1.25x1.25
\$515, 1.76 dwt

84114



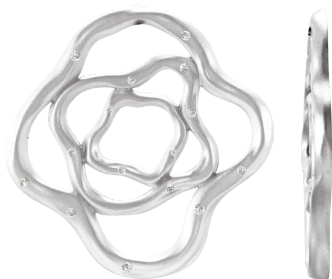
ct tw	1/2	3/4	1
mm Stone Size	1- 3.2, 1- 3.0	2- 3.5, 1- 3.25	1- 3.9, 1- 3.6, 1- 3.3
	1- 2.75, 1- 2.5	1- 2.75, 2- 2.5, 1- 2.25	1- 3.1, 1- 2.9, 1- 2.7
	1- 2.25, 2- 2.0	1- 2.0, 2- 1.75	1- 2.5, 1- 2.3, 1- 2.1, 1- 2.0
	2- 1.75, 1- 1.5		
Dimensions	27x12.75	30.75x14.25	33.75x16.5
Bail ID	3.75x1.75	5.5x2.25	4x2
dwt	1.32	1.72	2.31
14kt \$	\$405	\$505	\$649



85433 sterling silver/
14kt yellow
1/6 ct tw (32- 1.0)
33x18.25, bail ID 2x1.4
\$195, 1.25 dwt
matching earrings #85311
FJ #85433



85522 14kt
1/6 ct tw (35- 1.0)
52x19.75
bail ID 2.25x1.3
\$665, 1.90 dwt
matching earrings #85442



84861 sterling silver
 1/5 ct tw (10- 1.5, 5- 1.3)
 36x36.5, cow hitch assembly
 \$95, 3.63 dwt
 matching earrings #84862
 FJ #68068



84853 sterling silver
 1/5 ct tw (10- 1.5, 5- 1.3)
 37x35.5, cow hitch assembly
 \$125, 5.32 dwt
 matching earrings #84858
 ring #121923, FJ #68064



84859 sterling silver
 1/5 ct tw (10- 1.5, 5- 1.3)
 38x37.5, cow hitch assembly
 \$95, 3.41 dwt
 matching earrings #84860
 FJ #68225



84985 14kt
 7/8 ct tw (168- 1.1), 32.8 OD
 Chain Opening ID 1x1
 \$1,059, 3.96 dwt



84337 14kt
 1/2 ct tw (32- 1.2, 10- 1.0)
 44x36.75
 bail ID 7.5x3
 \$1,295, 4.90 dwt



84338 14kt
 1/2 ct tw (36- 1.2, 17- 1.0)
 48.25x21.25, bail ID 6.5x2.75
 \$999, 3.72 dwt
 matching earrings #84339



84739 sterling silver
 1/10 ct tw (20- 1.0)
 40.7x36.3, bail ID 4.25x2
 \$165, 3.69 dwt
 matching earrings #84740
 FJ #69283



84375 sterling silver
 1/5 ct tw (32- 1.0)
 39.0 OD, cow hitch assembly
 \$175, 5.41 dwt
 matching earrings #84394
 FJ #66813



84738 sterling silver
 1/10 ct tw (10- 1.3)
 42.6 OD, cow hitch assembly
 \$195, 7.00 dwt
 matching earrings #84737
 FJ #69287

PENDANTS



ROUND



84094 14kt
1- 10.0
34.5x34
bail ID 5.5x2.25
\$1,205, 4.53 dwt



84354 14kt
1- 3.0
27x18.75
bail ID 6.5x2.75
\$645, 2.40 dwt



83579 14kt
½ ct tw (1- 3.7
1- 3.25, 1- 3.0, 1- 2.7)
30x16.25, bail ID 4x2.75
\$799, 2.91 dwt



84363 sterling silver
1- 3.0
27x18.5
bail ID 7x2.75
\$79, 2.07 dwt



83105 14kt
½ ct tw (3- 2.5)
24.25x19.5
bail ID 3.25x2.75
\$715, 2.57 dwt



85452 14kt
0.03 ct (1- 2.0)
20x12.28
bail ID 5x3
\$195, 0.59 dwt



85452 14kt
1- 2.5
22x13.9
bail ID 5x3.2
\$209, 0.66 dwt



85454 14kt
0.02 ct (1- 1.75)
20.45x13
bail ID 5x2.5
\$205, 0.43 dwt



85454 14kt
1- 1.75
22.65x14.28
bail ID 5x2.5
\$225, 0.60 dwt



85396 14kt
0.08 ct tw (4- 1.7)
19.5x24
\$485, 1.76 dwt
matching earrings #85398
FJ #85396



85396 14kt
0.08 ct tw (4- 1.7)
28x34.75
\$879, 3.35 dwt
matching earrings #85398
FJ #85396



85397 sterling silver
⅓ ct tw (5- 1.7)
29.45x29, bail ID 4.5x2.1
\$119, 2.59 dwt
matching earrings #85403
ring #121959, FJ #85397



85406 14kt
6- 2.5, 4- 2.2, 5- 2.0, 4- 1.7
41.75x40, bail ID 3.75x2
\$1,185, 4.58 dwt
matching earrings #85403
ring #121959, FJ #85397



85219 14kt
32.5x15.25
bail ID 3x2.25
\$465, 1.67 dwt



85218 14kt
38.25x12.75
bail ID 3x2.25
\$435, 1.55 dwt



85225 14kt
47.5x15
bail ID 3.25x3
\$915, 3.31 dwt



85222 14kt
47.5x14.5
bail ID 3.25x3.1
\$685, 2.50 dwt



85540 14kt
¼ ct tw (1- 4.0), 50.1x15.9
bail ID 2.4x2.25
\$1,125, 4.22 dwt
FJ #85540



84721 sterling silver
¼ ct tw (10- 1.3, 8- 1.2
16- 1.1, 9- 1.0), 50x16.25
bail ID 5.5x2.75
\$145, 1.95 dwt
FJ #67745



84936 14kt
⅓ ct tw (6- 1.2, 3- 1.1
6- 1.0), 26.75x10.25
bail ID 2.30x1.51
\$335, 1.05 dwt



85181 sterling silver
0.03 ct tw (1- 1.0, 4- 0.9
9- 0.8), 32.28x9.49
bail ID 2.25x1.75
\$45, 0.97 dwt



85182 sterling silver
0.07 ct tw (1- 1.7, 8- 1.1
4- 0.9, 8- 0.8)
36.5x12.25
bail ID 3.25x1.75
\$55, 1.90 dwt



85180 sterling silver
0.03 ct tw (12- 0.8)
40.5x11.6
bail ID 2.25x1.75
\$49, 1.55 dwt



84718 sterling silver
⅓ ct tw (22- 1.0)
52x15, chain opening ID 3x2
\$105, 2.12 dwt
FJ #67743



84736 sterling silver
⅓ ct tw (1- 1.7, 11- 1.2
4- 1.1, 6- 1.0, 11- 0.8)
42.3x17, chain opening ID 3x2
\$85, 2.30 dwt
FJ #69280



84719 sterling silver
⅓ ct tw (2- 1.9
2- 1.6), 44x16
chain opening ID 3x2
\$79, 2.00 dwt
FJ #67744



84755 sterling silver
⅓ ct tw (1- 1.7, 8- 1.3, 22- 1.1
40- 1.0), 44.63x17.14
chain opening ID 3x2
\$295, 2.72 dwt
FJ #69279



84754 sterling silver
⅓ ct tw (1- 2.3, 9- 1.0)
45.27x15.32
bail ID 4.33x2.28
\$139, 1.91 dwt
FJ #69278



84155 14kt
 $\frac{1}{10}$ ct tw (21- 1.0)
 jump ring ID 0.8
 \$69, 0.28 dwt
 matching dangle #84411,
 FJ #67121



84405 14kt
 $\frac{1}{8}$ ct tw (23- 1.0)
 5.25x11, jump ring ID 0.7
 \$149, 0.31 dwt
 FJ #67072



84157 14kt
 $\frac{1}{4}$ ct tw (50- 1.0)
 17.8x18.75
 jump ring ID 0.8
 \$145, 0.62 dwt
 matching dangle #84419,
 FJ #66414



84398 14kt
 $\frac{1}{2}$ ct tw (2- 1.2, 56- 1.0)
 21.25x15.5
 jump ring ID 0.8
 \$265, 0.76 dwt
 matching dangle #84416,
 FJ #67073



84153 14kt
 $\frac{1}{8}$ ct tw (22- 1.0)
 12.5x9, chain opening ID 1.3
 \$159, 0.33 dwt
 matching dangle #84408,
 FJ #66413



R45184 14kt
 $\frac{1}{2}$ ct tw (59- 1.0)
 15.5 width
 chain opening ID 1.1
 \$269, 0.77 dwt
 FJ #R45184D



R45256 14kt
 $\frac{1}{4}$ ct tw (55- 1.0)
 19x19, jump ring ID 3.4
 \$325, 0.99 dwt
 FJ #R45256D



84714 14kt
 $\frac{1}{4}$ ct tw (47- 1.0)
 15.25x13.5, chain opening 1.1
 \$265, 0.75 dwt
 matching dangle #84715,
 FJ #67753 and #67755



84803 14kt
 $\frac{1}{8}$ ct tw (64- 1.0)
 16.3x18.5, jump ring ID 0.8
 \$289, 0.86 dwt



84158 14kt
 $\frac{1}{4}$ ct tw (47- 1.0)
 15.8x15.25, jump ring ID 0.8
 \$145, 0.63 dwt
 FJ #66416



84799 14kt
 $\frac{1}{2}$ ct tw (74- 1.0)
 26.5x19, bail ID 5x2.9
 \$395, 1.29 dwt
 matching earrings #84800,
 FJ #68059



R45252 14kt
 $\frac{1}{2}$ ct tw (45- 1.0)
 15.25x11, jump ring ID 3.4
 \$259, 0.74 dwt
 FJ #R45252D



84801 14kt
 $\frac{1}{2}$ ct tw (38- 1.0)
 20x11.25, bail ID 5x2.9
 \$245, 0.67 dwt
 matching earrings #84802,
 FJ #68057



84402 14kt
 1/3 ct tw (1- 1.5, 1- 1.3, 4- 1.2
 49- 1.0) 19x15.25, bail ID 1.1
 \$269, 0.78 dwt
 matching dangle #84488,
 FJ #67127 and #61379



84400 14kt
 3/8 ct tw (78- 1.0)
 21x20, bail ID 1.3
 \$355, 1.24 dwt
 matching dangle #84414,
 FJ #67120



84399 14kt
 1/2 ct tw (45- 1.0)
 19.25x11.5, bail ID 1.1
 \$375, 1.20 dwt
 FJ #67122



84406 14kt
 3/8 ct tw (84- 1.0)
 17.75x15.5, bail ID 1.1
 \$359, 1.15 dwt
 FJ #67128



84810 14kt
 1/4 ct tw (56- 1.0)
 28x12, bail ID 5x2.9
 \$309, 0.93 dwt
 matching earrings #84811,
 FJ #68061



84797 14kt
 3/8 ct tw (83- 1.0)
 27.25x18.25, bail ID 5x2.9
 \$375, 1.21 dwt
 matching earrings #84798,
 FJ #68055



84401 14kt
 1/2 ct tw (8- 1.2, 49- 1.0)
 19.5x13.5, bail ID 2.25x1.25
 \$279, 0.82 dwt
 matching dangle #84413,
 FJ #67126



84152 14kt
 0.08 ct tw (17- 1.0)
 8.8x8.5, jump ring ID 0.8
 \$59, 0.25 dwt
 FJ #66412



8388 14kt
 1/2 ct (11- 1.5)
 17x11, bail ID 1.75
 \$265, 0.77 dwt



8286 14kt
 1/2 ct tw (9- 1.5)
 14x8, bail ID 2.5
 \$289, 0.86 dwt
 matching earrings #8286E,
 ring #4149



8387 14kt
 1/2 ct tw (10- 1.7)
 19x10
 \$275, 0.79 dwt



83809 14kt two-tone
 1/4 ct tw (55- 1.0)
 24.5 OD, bail ID 3.25x2.25
 \$189, 3.47 dwt
 matching dangle #83808,
 FJ #67052



8984 14kt
 1/2 ct tw (17- 1.3)
 22x19, bail ID 3.0
 \$269, 0.89 dwt



80157 14kt
 0.03 ct tw (3- 1.3)
 22x20, bail ID 3.0
 \$495, 1.67 dwt

PENDANTS



Neckwear | Round



80152 14kt
 $\frac{1}{8}$ ct tw (1- 3.0, 2- 1.3)
 19x8, bail ID 2.25
 \$279, 0.82 dwt



80358 14kt
 0.03 ct tw (3- 1.3)
 21x7, bail ID 2.0
 \$295, 0.87 dwt



80138 14kt
 0.06 ct tw (3- 1.7)
 16x9, bail ID 1.75
 \$239, 0.65 dwt



8066 14kt
 $\frac{1}{6}$ ct tw (1- 2.7, 2- 2.2)
 19x7.5, bail ID 1.25
 \$335, 1.03 dwt



80151 14kt
 0.04 ct tw (4- 1.3)
 15x7, bail ID 1.75
 \$249, 0.69 dwt



81517 14kt
 $\frac{1}{10}$ ct (1- 3.0)
 13x11.25, bail ID 1x1.75
 \$249, 1.05 dwt



8238 14kt
 $\frac{1}{10}$ ct (1- 3.0)
 26x17, bail ID 1.75
 \$409, 1.33 dwt



8239 14kt
 $\frac{1}{8}$ ct (1- 3.2)
 25x12, bail ID 2.5
 \$329, 1.02 dwt



80061 14kt
 0.04 ct tw (2- 1.7)
 17x10, bail ID 2.75
 \$319, 0.97 dwt



80104 14kt
 0.06 ct tw (2- 2.0)
 18x7, bail ID 1.0
 \$179, 0.42 dwt



80128 14kt
 0.06 ct tw (3- 1.7)
 14x10, bail ID 1.0
 \$245, 0.68 dwt



8140 14kt
 0.06 ct tw (1- 2.0, 1- 1.7
 1- 1.3), 23x8, bail ID 2.0
 \$309, 0.93 dwt



8065 14kt
 0.06 ct tw (1- 2.0, 1- 1.7
 1- 1.3), 25.5x9, bail ID 2.0
 \$339, 1.06 dwt



8153 14kt
 $\frac{1}{8}$ ct tw (2- 2.7)
 23x12, bail ID 3.0
 \$275, 0.79 dwt



8205 14kt
 $\frac{1}{8}$ ct tw (2- 3.0)
 23x9, bail ID 1.0
 \$299, 0.90 dwt



80153 14kt
 0.04 ct tw (1- 1.7, 2- 1.3)
 17x9, bail ID 1.5
 \$179, 0.53 dwt



8156 14kt
 0.08 ct (1- 2.8)
 20x15, bail ID 2.75
 \$259, 0.73 dwt



8155 14kt
 $\frac{1}{8}$ ct tw (2- 3.0)
 29x9, bail ID 2.75
 \$259, 0.73 dwt



8152 14kt
 $\frac{1}{8}$ ct tw (2- 3.0)
 25x16, bail ID 2.25
 \$279, 0.82 dwt



83194 14kt
 $\frac{1}{3}$ ct tw (1- 3.0, 2- 2.5
 2- 2.25), 30x15
 bail ID 3.25x2.25
 \$659, 2.34 dwt



83286 14kt
 $\frac{1}{4}$ ct tw (1- 3.4, 2- 2.5)
 10.5x5.75, chain opening ID 1.75
 \$279, 0.81 dwt



80290 14kt
 0.04 ct tw (4- 1.3)
 13x11, bail ID 3.0
 \$275, 0.80 dwt



80340 14kt
 $\frac{1}{4}$ ct tw (17- 1.3)
 17x12, bail ID 1.75
 \$449, 1.49 dwt



80756 14kt
 0.03 ct (1- 2.0)
 10.75x6.25, bail ID 1.0
 \$145, 0.27 dwt



8138 14kt
 0.05 ct (1- 2.4)
 21x10, bail ID 1.0
 \$245, 0.68 dwt



8074 14kt
 0.06 ct tw (3- 1.7)
 18x6, bail ID 1.25
 \$289, 0.86 dwt



80107 14kt
 0.06 ct tw (4- 1.5)
 15x6, bail ID 2.0
 \$325, 1.00 dwt



80150 14kt
 0.05 ct tw (1- 1.7, 3- 1.3)
 12x9, bail ID 2.0
 \$245, 0.68 dwt



80108 14kt
 $\frac{1}{4}$ ct tw (6- 1.7)
 14x7.5, bail ID 1.5
 \$199, 0.50 dwt



80276 14kt
 $\frac{1}{4}$ ct tw (1- 2.4, 4- 1.7, 4- 1.5)
 15x8, bail ID 1.75x1.25
 \$229, 0.61 dwt



80123 14kt
 0.07 ct tw (7- 1.3)
 20x10, bail ID 2.25
 \$235, 0.63 dwt



8435 14kt
 $\frac{1}{10}$ ct tw (5- 1.7)
 21x8, bail ID 1.75
 \$259, 0.86 dwt



80137 14kt
 0.08 ct tw (5- 1.5)
 16x11, bail ID 2.5
 \$189, 0.46 dwt



80144 14kt
 $\frac{1}{4}$ ct tw (9- 1.5)
 27x18, bail ID 2.25
 \$475, 1.59 dwt



80063 14kt
 0.03 ct tw (6- 1.0)
 21x10, bail ID 2.5
 \$335, 1.04 dwt



801208 14kt
 0.08 ct tw (3- 2.2)
 24.5x10, bail ID 2.9x4.7
 \$365, 1.28 dwt



80321 14kt
 0.05 ct tw (1- 1.3
 8- 1.0), 13.7x6.8
 bail ID 1.5
 \$205, 0.52 dwt



80110 14kt
 $\frac{1}{4}$ ct tw (3- 2.0
 3- 1.8, 4- 1.5), 17x7
 bail ID 2.75
 \$319, 0.98 dwt



8245 14kt
 $\frac{1}{4}$ ct tw (4- 2.0, 1- 1.7)
 19x13, bail ID 1.75
 \$375, 1.21 dwt



8592 14kt
 $\frac{1}{4}$ ct tw (5- 2.0)
 22x10, bail ID 1.75
 \$565, 1.97 dwt



80122 14kt
 $\frac{1}{4}$ ct tw (1- 1.7, 9- 1.5)
 15x9, bail ID 1.5
 \$275, 0.80 dwt



8235 14kt
 $\frac{3}{8}$ ct tw (5- 2.2, 10- 1.7)
 25x9, bail ID 1.5
 \$365, 1.27 dwt

PENDANTS



ROUND



81480 14kt two-tone
 $\frac{3}{8}$ ct tw (1- 4.8 2.25x1.25
 2- 2.25x1.25x1)
 15.5x5, bail ID 1.65x5
 \$295, 0.88 dwt



81480 14kt two-tone
 $\frac{3}{8}$ ct tw (1- 5.8
 1- 2.5x1.5, 2- 2.25x1.5x1)
 16x5.75, bail ID 16x5.75
 \$355, 1.12 dwt



81477 14kt two-tone
 $\frac{1}{8}$ ct tw (1- 4.0, 2- 1.7
 1- 1.5), 13x4.25
 bail ID 1.3x1.5
 \$285, 0.84 dwt



82559 14kt
 $\frac{1}{10}$ ct (1- 3.0)
 9.25x4.5
 bail ID 9.25x4.5
 \$169, 0.37 dwt



82792 14kt
 $\frac{1}{4}$ ct (1- 6x3)
 21x4.5
 bail ID 3.25x4.75
 \$405, 1.33 dwt



82790 14kt
 $\frac{1}{4}$ ct tw (1- 3.4, 1- 3.0)
 19.75x7.75, bail ID 4x2
 \$519, 1.90 dwt



82255 14kt
 $\frac{1}{4}$ ct (1- 4.1)
 18.75x15.75
 bail ID 4.25x1.25
 \$509, 1.74 dwt



82254 14kt two-tone
 $\frac{1}{4}$ ct (1- 4.0)
 23x7.5, bail ID 1.25
 \$495, 1.68 dwt



82262 14kt
 $\frac{1}{10}$ ct (1- 3.0)
 26.25x10.5
 bail ID 1.25
 \$865, 3.16 dwt



82251 14kt
 $\frac{1}{4}$ ct (1- 4.1)
 25.75x14.25
 bail ID 5x2
 \$949, 3.51 dwt



82249 14kt
 $\frac{1}{6}$ ct (1- 3.4)
 22.25x10, bail ID 1.5
 \$685, 2.46 dwt



82179 14kt
 $\frac{1}{6}$ ct (1- 3.4)
 20.25x6, bail ID 2.0
 \$485, 1.64 dwt



8142 14kt
 0.02 ct (1- 1.7)
 34x7, bail ID 1.7
 \$265, 0.75 dwt



82250 14kt
 $\frac{1}{4}$ ct (1- 4.1)
 30.25x8.25
 bail ID 1.5x1.25
 \$575, 2.01 dwt



82258 14kt
 $\frac{1}{6}$ ct (1- 3.8)
 20x9.75
 \$459, 1.55 dwt



81187 14kt two-tone
 $\frac{1}{6}$ ct (1- 3x3)
 30x17
 \$925, 3.40 dwt



82280 14kt
 $\frac{1}{6}$ ct (1- 3.2)
 27x11.5
 bail ID 6.5x3.25
 \$749, 2.71 dwt



81059 14kt
 0.05 ct tw (3- 1.5)
 27x17
 \$795, 2.88 dwt



83138 14kt
 0.08 ct tw (8- 1.3)
 29x19.75, bail ID 3.75x3
 \$1,375, 5.23 dwt



83145 14kt
 $\frac{1}{10}$ ct (1- 3.0)
 25x25
 cow hitch assembly
 \$765, 2.77 dwt



83075 14kt
 $\frac{1}{10}$ ct tw (3- 3.0)
 20.25x16, bail ID 3x2.5
 \$509, 1.74 dwt



83073 14kt
 $\frac{1}{6}$ ct (1- 3.4), 24.5x19.5
 bail ID 3.25x2.25
 \$985, 3.78 dwt



22138 Round Bar Pendant

mm Stone Size	3.25	3.5	3.75	4.1	4.4	5.2	5.8	6.5	7.4	8.2
Overall Size	19.5x3.25	19.75x3.25	20x3.5	20.5x4	20.75x4.25	21.5x5	22x5.75	22.75x6.25	23.5x7.25	24.5x8.25
Bail ID	1.75x1.25	2x2.5	2x2.5	2x2.75	2x2.75	2.75x2.25	2x3	2.5x3.25	2.5x3.5	2.75x3.75
dwt	0.66	0.66	0.71	0.74	0.80	0.99	1.03	1.21	1.39	1.64
14kt \$	\$245	\$239	\$255	\$259	\$275	\$325	\$335	\$375	\$419	\$485



81320 Two-Tone Solitaire Pendant Slide

mm Stone Size	5.6	5.8	6.2	6.5
Overall Size	13.0	13.5	13.75	14.0
Chain Opening ID	1.65	1.90	1.90	1.90
dwt	2.58	2.78	2.90	3.03
14kt \$	\$719	\$769	\$799	\$829



81537 Solitaire Pendant Slide

mm Stone Size	4.1	5.2	6.5
Overall Size	12x7.25	13.75x8.5	15x9.75
Bail ID	1.9x2.5	1.65	1.90
dwt	0.93	1.40	1.76
14kt \$	\$309	\$425	\$515



21049 14kt two-tone
1- 5.0, 12.75 OD
chain opening ID 3.25x2
\$305, 1.65 dwt



20934 14kt
1- 5.0, 12.75 OD
chain opening ID 2.0
\$345, 1.95 dwt



20933 14kt
1- 5.0, 12.75 OD
chain opening ID 2.0
\$295, 1.63 dwt



81775 14kt
1- 5.0, 15.5x11.5
chain opening ID 1.75x2.5
\$565, 1.97 dwt



81775 14kt
1- 6.0, 16x12
chain opening ID 2.25x3
\$659, 2.34 dwt



22369 14kt
1- 5.2, 1/4 ct tw (12- 1.3)
28x5, bail ID 2x2.75
\$495, 1.67 dwt



82346 14kt two-tone
1- 6.0, 36x12
bail ID 1.75x1.75
\$1,055, 3.93 dwt

PENDANTS



ROUND



8242 14kt
0.03 ct (1- 2.0)
23x9, bail ID 1.5
\$309, 0.94 dwt



8246 14kt
0.01 ct (1- 1.3)
20x12, bail ID 1.75
\$205, 0.52 dwt



8241 14kt
0.03 ct (1- 2.0)
13x9, bail ID 1.75
\$225, 0.59 dwt



80146 14kt
¼ ct tw (1- 3.2, 16- 1.3)
19x10, bail ID 1.75
\$285, 0.84 dwt



82425 14kt
¼ ct tw (1- 4.1, 4- 1.0)
12.75x12.75, bail ID 1.0
\$425, 1.41 dwt



82426 14kt
½ ct tw (1- 4.1, 2- 1.3
17- 1.0), 18.25x10.25
bail ID 1.0
\$415, 1.35 dwt



82430 14kt
½ ct tw, (1- 4.1, 8- 1.0)
10.0 width
\$299, 0.90 dwt
matching earrings #82433



83230 14kt
½ ct tw (1- 3.8
30- 1.0), 21.25x12.25
bail ID 3.25x1.75
\$629, 2.22 dwt



82565 14kt
¼ ct tw (1- 3.4
14- 1.2), 19.5x7.5
bail ID 4.25x2.25
\$339, 1.05 dwt



83228 14kt
¾ ct tw (1- 3.8, 32- 1.2)
23x16.25, bail ID 4.25x2
\$699, 2.50 dwt
matching ring #121082



81979 14kt
1- 6.0
20.5x14.5
bail ID 2.25x3.25
\$679, 2.55 dwt



83226 14kt
½ ct tw
(1- 3.8, 2- 2.8, 34- 1.0)
24.25x12, bail ID 4.25x2
\$605, 2.12 dwt
matching ring #121081



83221 14kt
½ ct tw (1- 2.4, 2- 2.0
20- 1.0), 25x11.5
bail ID 4.25x2
\$629, 2.23 dwt
matching ring #121083



82566 14kt
½ ct tw (1- 3.0, 1- 2.7)
30.25x9
\$489, 1.67 dwt
matching earrings #82569



83043 14kt
½ ct tw (60- 1.0)
36x9.75
bail ID 1.5x1.25
\$665, 2.36 dwt



82567 14kt
¼ ct tw (1- 3.0
1- 2.7, 1- 2.5)
31.25x9.75, bail ID 1.5
\$465, 1.56 dwt
matching earrings #82570



83535 14kt
¼ ct tw (1- 1.5
34- 1.2, 1- 1.0)
25x18
bail ID 3.75x2.25
\$485, 1.64 dwt



83669 14kt
¾ ct tw (1- 3.5x3.5
1- 2.75x2.75, 1- 2.25x2.25, 1- 2x2
2- 1.5, 2- 1.3, 52- 1.0), 30x11.75
bail ID 2.50x1.25
\$725, 2.61 dwt



83626 14kt
¾ ct tw (1- 2.5, 1- 1.5
2- 1.2, 63- 1.0)
30.25x22.25
bail ID 5.5x2.25
\$889, 3.27 dwt



85601 14kt
1- 7.5
30.90x17.6
bail ID 3.5x2
\$435, 1.48 dwt



85605 14kt
1- 1.75, 4- 1.5
26.85x18.75
bail ID 2.5x2.1
\$305, 0.91 dwt



85609 14kt
1- 1.75
24.6x17.25
bail ID 3.5x2
\$439, 1.46 dwt



85597 14kt
1- 1.75
0.025 ct tw (2- 1.3)
28.75x13.25, bail ID 2.25x1.6
\$369, 1.17 dwt



85607 14kt
1- 1.6
0.03 ct tw (6- 1.0)
25.8x15.5, bail ID 2.5x2.1
\$375, 1.19 dwt



85599 14kt
1- 2.2, 1- 1.5
0.03 ct (1- 1.3)
24.5x17.3, bail ID 2.25x1.6
\$285, 0.84 dwt



85603 14kt
5- 1.3
31.7x19.45, bail ID 3x1.6
\$435, 1.44 dwt



85631 14kt
0.08 ct tw (1- 2.5, 1- 1.7)
46.28x15.6, bail ID 3.25x2
\$619, 2.18 dwt
matching earrings #85630,
FJ #85631



85621 14kt
0.08 ct tw (1- 2.0, 1- 1.7, 1- 1.2
10- 0.8), 51x14.9, bail ID 3.25x2
\$605, 2.13 dwt
matching earrings #85620,
FJ #85621



85629 14kt
0.05 ct tw (1- 1.7, 1- 1.2, 10- 0.8)
46.5x14.9, bail ID 3.25x2
\$535, 1.85 dwt
matching earrings #85628,
FJ #85629



85623 14kt
0.03 ct (1- 2.0)
43.8x19.8, bail ID 2.25x1.3
\$735, 2.66 dwt
matching earrings #85622,
FJ #85623



85625 14kt
0.05 ct tw (1- 2.0, 1- 1.7)
51.95x18.75, bail ID 3x2
\$615, 2.17 dwt
matching earrings #85624,
FJ #85625



85627 14kt
1/8 ct tw (2- 1.5, 1- 2.0)
46.2x16.8, bail ID 3.25x1.8
\$665, 2.37 dwt
matching earrings #85626,
FJ #85627

PENDANTS



Neckwear | Round



85355 14kt
0.08 ct tw (5- 1.5, 2- 1.1)
29.9x12.3, bail ID 3.53x1.65
\$549, 1.90 dwt
matching earrings #85356,
ring #121946, FJ #85355



85341 14kt
1/8 ct tw (1- 2.0, 4- 1.7)
27.5x13.7, bail ID 3.53x1.65
\$595, 2.08 dwt
matching earrings #85342,
ring #121948, FJ #85341



85331 14kt
1- 2.8
0.025 ct (1- 1.5)
29.7x14.2
bail ID 3x2
\$635, 2.25 dwt



85337 14kt
1- 3.4
0.025 ct (1- 1.5)
24.3x13.4, bail ID 3.5x2.1
\$435, 1.43 dwt



85339 14kt
1- 8
0.025 ct (1- 1.5)
33.7x14.3, bail ID 4.3x2.2
\$519, 1.78 dwt



85372 14kt
1- 5.0
1/4 ct tw (4- 2.5, 4- 1.2)
24.6x17.2, bail ID 3x2
\$535, 1.84 dwt



85376 14kt
1/8 ct tw (1- 3.0, 8- 1.2)
25.6x16.8, bail ID 2.5x2.1
\$469, 1.30 dwt
matching earrings #85377,
charm #85378, FJ #85376



85365 14kt
1/8 ct tw (1- 3.0, 6- 1.5, 18- 1.0, 6- 0.8)
26.5x19, bail ID 2.5x2.1
\$569, 1.64 dwt
matching earrings #85351,
charm #85352, FJ #85365



85244 sterling silver
1- 6.0
25.75x14.75
bail ID 5.5x1.5
\$195, 1.21 dwt



A. 85365 | B. stuller.com | C. 85372



84642 14kt
2- 7x5, 1- 6x4, 2- 4.5
56.75x11, bail ID 4.5
\$975, 3.60 dwt



84596 14kt
1- 6.0, 1- 4.0
29.25x10.25, bail ID 3.75x2.5
\$415, 1.48 dwt



84594 14kt
1- 9.0, 1- 6.0, 1- 4.0
52.5x12.5, bail ID 3.75x2.75
\$855, 3.12 dwt



84629 14kt
1- 8x6, 1- 6.0, 1- 5.0
22.75x19.75
bail ID 5x3.25
\$615, 2.28 dwt



83685 14kt
0.05 ct tw (1- 7x5, 1- 6.0
1- 4.5, 3- 1.5)
20x12, bail ID 4.75x2.25
\$545, 2.01 dwt



83691 14kt
0.05 ct tw (1- 6.5, 1- 6.0
1- 5.0, 1- 4.5, 3- 1.5)
28.75x11.75, bail ID 5x2.25
\$605, 2.12 dwt



83718 14kt
0.05 ct tw (1- 8x4, 1- 7x5
1- 5x5, 1- 4.5, 3- 1.5)
20.5x13.5
\$529, 1.94 dwt

PENDANTS



ROUND

Neckwear | Round



80707 14kt
0.03 ct (1- 2.0)
11.25x8.25, bail ID 1.2
\$139, 0.25 dwt
FJ #60961



8049 14kt
0.01 ct (1- 1.3)
13x11, bail ID 1.75
\$215, 0.55 dwt



80028 14kt
0.025 ct (1- 1.7)
12x10, bail ID 1.0
\$145, 0.27 dwt
FJ #60990



80030 14kt
.025 ct (1- 1.7)
14x10, bail ID 1.0
\$165, 0.35 dwt



80005 14kt
0.025 ct (1- 1.7)
14x10, bail ID 1.25
\$235, 0.63 dwt
FJ #60734
matching earrings #80166



80708 14kt
0.04 ct (1- 2.2)
13.75x9, bail ID 1.4x2.25
\$145, 0.28 dwt



80021 14kt
0.03 ct (1- 2.0)
16x12, bail ID 1.0
\$219, 0.57 dwt



81372 14kt
0.04 ct (1- 2.2)
17x11.5, bail ID 1.4x2
\$339, 1.05 dwt



81728 14kt
0.07 ct (1- 2.7)
16.25x11.25, bail ID 2.0
\$329, 1.02 dwt
FJ #61710



81373 14kt
1/10 ct (1- 3.0)
18.5x13, bail ID 1.4x2
\$385, 1.23 dwt



8051 14kt
0.025 ct (1- 1.7)
20x13, bail ID 1.75
\$249, 0.69 dwt



80012 14kt
0.025 ct (1- 1.7)
22x15, bail ID 2.75
\$395, 1.28 dwt



80013 14kt
0.025 ct (1- 1.7)
20x16, bail ID 2.0
\$345, 1.08 dwt



81365 14kt
1/10 ct (1- 3.0)
20.5x13.5, bail ID 1.5x2
\$405, 1.32 dwt
FJ #60730



81379 14kt
0.025 ct (1- 1.7)
27.5x18.5, bail ID 2.8x4
\$645, 2.30 dwt



80412 14kt
0.04 ct (1- 2.2)
22x16, bail ID 1.8x2.25
\$299, 0.90 dwt



83097 14kt
1/2 ct tw (1- 2.0)
1- 3.0 1- 2.5)
19x14.25, bail ID 3.25x2
\$415, 1.49 dwt



80037 14kt
0.05 ct tw (3- 1.5)
16x11, bail ID 1.0
\$195, 0.47 dwt



80008 14kt
0.025 ct (1- 1.7)
15x14, bail ID 1.0
\$259, 0.73 dwt



80049 14kt
0.025 ct tw (2- 1.3)
20x16, bail ID 2.25
\$269, 0.78 dwt



80001 14kt
0.03 ct tw (3- 1.3)
18x13, bail ID 2.5
\$285, 0.84 dwt



80700 14kt
0.05 ct tw (3- 1.5)
16.25x12.5, bail ID 1.0
\$205, 0.51 dwt



83089 14kt
1/8 ct tw (3- 2.7)
13.5x13, bail ID 3.5x2.5
\$355, 1.11 dwt



80698 14kt
0.05 ct tw (3- 1.5)
16.25x11.5
bail ID 1.75x2
\$195, 0.49 dwt



80003 14kt
0.05 ct tw (3- 1.5)
19x13, bail ID 1.5
\$289, 0.86 dwt



80051 14kt
0.05 ct tw (3- 1.5)
20x15, bail ID 2.25
\$265, 0.75 dwt



8444 14kt
0.03 ct tw (3- 1.3)
17x10, bail ID 2.0
\$385, 1.24 dwt



8555 14kt
0.03 ct tw (1- 1.7, 1- 1.3)
14x7, bail ID 1.5
\$205, 0.52 dwt



83050 14kt
0.06 ct (1- 2.5)
28x16.25
cow hitch assembly
\$635, 2.24 dwt



81368 14kt
1 ct tw (5- 5x3, 3- 1.3)
27.5x15.5, bail ID 1.8x3.75
\$635, 2.36 dwt



83149 14kt
1/8 ct tw (1- 2.0)
1- 2.5, 1- 3.0)
27.5x8.25
\$399, 1.30 dwt



83049 14kt
0.06 ct tw (3- 1.7)
32.5x11, bail ID 2x1.75
\$525, 1.80 dwt

PENDANTS



ROUND



84984 14kt
 $\frac{3}{4}$ ct tw (22- 2.10)
 25.5x21, bail ID 3.0
 \$469, 1.58 dwt



80188 14kt
 0.08 ct tw (5- 1.5)
 14x9, bail ID 2.0
 \$205, 0.50 dwt



80022 14kt
 $\frac{1}{6}$ ct tw (4- 1.7, 6- 1.5)
 17x11, bail ID 1.75
 \$245, 0.68 dwt



8273 14kt
 $\frac{1}{3}$ ct tw (9- 2.0)
 21x15, bail ID 1.25
 \$315, 0.96 dwt



8767 14kt
 0.025 ct tw
 (8- 2.2, 3- 1.2)
 20x14, bail ID 1.5
 \$325, 1.00 dwt



80709 14kt
 0.03 ct tw
 (1- 1.5, 2- 1.2)
 13x13.25, bail ID 16x2.5
 \$239, 0.66 dwt



8759 14kt
 0.07 ct tw
 (2- 1.7, 2- 1.5)
 20x16, bail ID 2.0
 \$335, 1.04 dwt



8998 14kt
 0.05 ct tw
 (4- 1.3, 2- 1.0)
 16x15, bail ID 2.0
 \$249, 0.70 dwt



80036 14kt
 0.08 ct tw
 (3- 1.5, 4- 1.3)
 18x14, bail ID 3.0
 \$269, 0.77 dwt



80186 14kt
 $\frac{1}{4}$ ct tw
 (4- 2.2, 8- 2.0, 2- 1.7)
 23x18, bail ID 3.0
 \$495, 1.68 dwt



80014 14kt
 $\frac{1}{2}$ ct tw
 (3- 2.5, 1- 2.4, 5- 2.2)
 27x20, bail ID 1.5
 \$815, 2.97 dwt



80651 14kt
 $\frac{1}{3}$ ct tw (17- 1.7)
 24.75x20.75
 bail ID 2.2x3.25
 \$549, 1.90 dwt



8919 14kt
 $\frac{1}{4}$ ct tw (3- 2.0, 6- 1.7
 2- 1.5, 2- 1.3)
 24.5x19, bail ID 3.25
 \$525, 1.79 dwt



80046 14kt
 $\frac{1}{4}$ ct tw (1- 1.5, 13- 1.7)
 28x22, bail ID 2.25
 \$779, 2.83 dwt
 FJ #60736



80043 14kt
 $\frac{1}{3}$ ct tw (1- 2.4, 6- 2.0
 2- 1.7, 2- 1.5)
 25x20, bail ID 2.0
 \$705, 2.52 dwt



8770 14kt
 1/2 ct tw (14- 1.5)
 13.5x10, bail ID 1.0
 \$199, 0.50 dwt



8556 14kt
 1/4 ct tw (12- 1.7)
 16x10, bail ID 2.25
 \$255, 0.71 dwt



80017 14kt
 1/2 ct tw (14- 1.5)
 17x12, bail ID 2.5
 \$285, 0.83 dwt



80163 14kt
 1/2 ct tw (13- 1.8, 1- 1.3)
 15x12, bail ID 1.5
 \$285, 0.84 dwt
 matching earrings #80164



8046 14kt
 1/2 ct tw (16- 1.7)
 18x12, bail ID 2.75x1.5
 \$369, 1.18 dwt
 FJ #60744



8045 14kt
 1/2 ct tw (16- 2.0)
 21x15, bail ID 3x1.75
 \$375, 1.19 dwt
 FJ #60745



80161 14kt
 1/2 ct tw (11- 2.0, 4- 1.7
 3- 1.5), 18x15, bail ID 2.0
 \$379, 1.22 dwt
 matching earrings #80162
 FJ #60741



80173 14kt
 3/4 ct tw (4- 2.5, 7- 2.4
 2- 2.2, 3- 2.0, 2- 1.7)
 21x19, bail ID 2.25
 \$455, 1.53 dwt
 matching earrings #80174



8237 14kt
 1/4 ct tw (10- 2.5, 5- 2.2)
 22x17, bail ID 2.0
 \$725, 2.60 dwt



80446 14kt
 1/2 ct tw (14- 2.2, 1- 1.5)
 20.75x15.5
 bail ID 1.8x2.75
 \$439, 1.46 dwt



8044 14kt
 3/10 ct tw (18- 2.4)
 26x21, bail ID 2.0
 \$649, 2.31 dwt
 FJ #60746



80181 14kt
 3/4 ct tw (8- 3.0)
 27x23, bail ID 2.75
 \$755, 2.72 dwt



8628 14kt
 1/2 ct tw (16- 2.0)
 27x18, bail ID 2.5
 \$745, 2.69 dwt



8627 14kt
 3/10 ct tw (18- 2.4)
 30x23, bail ID 2.5
 \$869, 3.31 dwt



8695 14kt
 1/2 ct tw (16- 2.0)
 30x22, bail ID 3.0
 \$915, 3.48 dwt

PENDANTS



81366 14kt
0.07 ct (1- 2.7)
17.5x18.5
bail ID 1.6x2.5
\$569, 1.98 dwt



83048 14kt
0.03 ct tw (3- 2.0)
36.75x15.25
bail ID 4.25x2.75
\$555, 1.92 dwt



84374 14kt
1/8 ct tw (42- 1.0)
27x25.75
bail ID 3.25x1.75
\$759, 2.86 dwt



83052 14kt
0.04 ct tw (7- 1.0)
26.5x16.5
bail ID 1x1
\$515, 1.89 dwt



80656 14kt
0.03 ct tw (2- 1.5)
17.25x13.5, bail ID 1x1
\$245, 0.68 dwt
FJ #60962



8050 14kt
1/8 ct tw (4- 2.4)
18x13
bail ID 18x13
\$325, 1.11 dwt



83074 14kt
1/8 ct tw (3- 2.4)
17x16
bail ID 2.25x1.5
\$615, 2.16 dwt



81467 14kt
1/4 ct (1- 4.1)
22x17.5
bail ID 3.6x4.5
\$455, 1.53 dwt



84314 14kt yellow/sterling silver
0.07 ct tw (13- 1.0)
24x18, bail ID 5.5x3
\$275, 2.57 dwt
FJ #66825



85549 14kt
1- 1.75, 1- 1.5
30.25x12.25
\$265, 0.77 dwt



85547 14kt
0.02 ct (1- 1.5)
15.25x10, bail ID 3x2.25
\$169, 0.38 dwt
FJ #85547



8763 14kt
 1/3 ct tw (18- 1.7)
 18x14
 bail ID 1.5
 \$275, 0.80 dwt



84632 14kt
 1/4 ct tw (25- 1.3)
 17.75x13.5
 bail ID 2.5x1.5
 \$249, 0.70 dwt
 FJ #67533



84632 14kt
 1/2 ct tw (25- 1.7)
 22.5x17.75
 bail ID 3.75x2
 \$389, 1.25 dwt
 FJ #67533



84632 14kt
 1 ct tw (25- 2.2)
 27.5x22, bail ID 5x2.5
 \$645, 2.28 dwt
 FJ #67533



81984 14kt
 5/8 ct tw (40- 1.5)
 21.75x21.25
 chain opening ID 6x1.25
 \$659, 2.34 dwt



83627 14kt
 1/4 ct tw (11- 1.3, 24- 1.0)
 33x23.75
 bail ID 5x2.75
 \$959, 3.55 dwt



84968 14kt
 1/8 ct tw (43- 1.0)
 19.5x12.5
 bail ID 3.0
 \$295, 0.88 dwt



84969 14kt
 1/8 ct tw (9- 1.6, 3- 1.5)
 5.25 width
 chain opening ID 1.6
 \$255, 0.71 dwt



81747 14kt
 1/8 ct tw (18- 1.7)
 12.5 width
 chain opening ID 4.5x1.5
 \$485, 1.65 dwt
 matching earrings #81748,
 FJ #62388



80025 14kt
 5/8 ct tw (6- 2.2
 14- 2.0), 16x18
 bail ID 1.25
 \$459, 1.55 dwt



83587 14kt
 1/8 ct tw (1- 2.7, 1- 2.5
 1- 2.2, 1- 2.0, 1- 1.7)
 27.25x20.75, bail ID 4x2.25
 \$425, 1.41 dwt
 FJ #65402



83587 14kt
 1/2 ct tw (1- 3.6, 1- 3.3
 1- 3.0, 1- 2.7, 1- 2.4)
 27.95x27.75
 bail ID 3.5x5.5
 \$775, 2.80 dwt



84403 14kt
 1/2 ct tw (23- 1.0)
 15x7, jump ring id .08
 \$159, 0.33 dwt



84407 14kt
 1/4 ct tw (49- 1.0)
 16.8x12.25
 jump ring ID 0.8
 \$195, 0.70 dwt



84154 14kt
 1/8 ct tw (22- 1.0)
 9.8x8
 jump ring ID 0.8
 \$75, 0.31 dwt

PENDANTS



OVAL



28403 4-Prong Basket Pendant

mm Stone Size	5x3	6x4	7x5	8x6	9x7	10x8	11x9	12x10	13x11	14x10
Bail ID	1.75x1.6	2.25x1.8	2.75x2	3.25x2	3.25x2	4.25x2.3	4.5x2.5	5x2.9	5.0x3	5.5x3.2
dwt	0.20	0.26	0.36	0.45	0.54	0.67	0.88	0.95	1.14	1.57
14kt \$	\$49	\$65	\$85	\$105	\$125	\$155	\$199	\$215	\$255	\$345

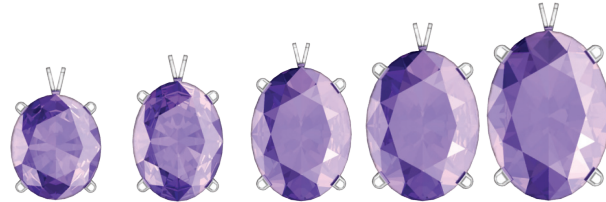


mm Stone Size	14x12	16x12	18x13	22x16
Bail ID	5.5x3.2	5.5x3.2	6.0x3.4	6.5x3.9
dwt	1.45	1.60	1.75	2.32
14kt \$	\$319	\$355	\$385	\$505



1500 4-Prong Basket Pendant

mm Stone Size	5x3	6x4	7x5	8x6	9x7	10x8	11x9	12x10	13x11	14x10
Bail ID	1.2	1.2	1.4	1.4	2x1.8	2x1.9	3x2.4	2.75x2.2	2.75x2.2	4.75x3.1
dwt	0.24	0.32	0.39	0.44	0.56	0.72	0.73	0.86	0.97	1.37
14kt \$	\$59	\$75	\$95	\$105	\$129	\$165	\$165	\$195	\$219	\$295



mm Stone Size	14x12	16x12	18x13	20x15	22x16
Bail ID	4.75x3.2	5.5x3.7	7.5x4.6	7.5x4.6	7.5x4.6
dwt	1.37	1.78	2.18	2.33	2.33
14kt \$	\$295	\$379	\$455	\$485	\$485



28427 4-Prong Lightweight Basket Pendant

mm Stone Size	5x3	6x4	7x5	8x6	9x7	10x8	11x9	12x10
Bail ID	1.75x1.6	2.25x1.8	2.75x2	3.25x2.2	3.5x2.2	3.75x2.5	4.5x2.9	5x2.9
dwt	0.15	0.20	0.25	0.32	0.38	0.47	0.56	0.62
14kt \$	\$39	\$49	\$65	\$75	\$89	\$109	\$129	\$145



24871 Oval Filigree Back Set Bezel Pendant

mm Stone Size	6x4	7x5	8x6	9x7	10x8
Bail ID	2.5x1.7	2.75x1.8	3.25x1.9	3.25x2.1	4x2.3
dwt	0.35	0.46	0.62	0.81	0.99
14kt \$	\$85	\$109	\$145	\$185	\$225



24150 4-Prong Vintage Scroll Setting® Pendant



mm Stone Size	10x8	11x9	12x10	13x11
Bail ID	4.3x2.2	5x2.3	5.5x2.4	6x2.8
dwt	0.55	0.72	0.85	1.00
14kt \$	\$135	\$169	\$199	\$165



mm Stone Size	14x10	16x12	18x13	20x15
Bail ID	5.5x2.5	6x3	6.5x3.3	7.5x3.5
dwt	0.85	1.39	1.48	1.84
14kt \$	\$199	\$305	\$325	\$389



mm Stone Size	22x16	23x17	25x20
Bail ID	7.5x3.5	8x3.8	9x4.1
dwt	1.99	2.27	3.03
14kt \$	\$419	\$475	\$635



24147 Four-Prong Laurel Scroll Setting® Pendant



mm Stone Size	10x8	11x9	12x10	13x11
Bail ID	4.5x2	4.8x2.2	5.5x2.4	6.8x3.1
dwt	0.66	0.81	1.05	1.22
14kt \$	\$159	\$189	\$239	\$279



mm Stone Size	14x10	16x12	18x13	20x15
Bail ID	5.5x2.6	6.0x2.7	6.5x3.2	7.5x3.6
dwt	1.17	1.73	1.99	2.38
14kt \$	\$269	\$365	\$415	\$499



mm Stone Size	22x16	23x17	25x20
Bail ID	8x3.9	7.7x4.2	9.5x4.3
dwt	2.51	3.02	3.76
14kt \$	\$525	\$629	\$779



1903 4-Prong Scroll Setting® Pendant



mm Stone Size	5x3	6x4	7x5	8x6	9x7	10x8	11x9	12x10	13x11	14x10	14x12
Bail ID	3x1.75	3x1.75	4x2.0	4x2	4.25x2.5	4.25x2.5	4.25x2.5	4.25x2.5	3.75x2.5	3.75x2.5	3.75x2.5
dwt	0.25	0.30	0.37	0.48	0.54	0.66	0.76	0.82	1.08	1.14	1.24
14kt \$	\$75	\$79	\$99	\$115	\$129	\$155	\$185	\$199	\$249	\$269	\$285



mm Stone Size	16x12	18x13	20x15	22x16
Bail ID	3.75x2.5	4.5x3.5	4.5x3.5	4.5x3.5
dwt	1.59	1.81	1.84	2.15
14kt \$	\$345	\$385	\$389	\$455

Most items available in any metal quality.

Suggested retail prices based on \$1,600 gold, \$1,700 platinum, and \$30 silver. Visit stuller.com for our complete product selections and current pricing. | 729



A. 84992 | B. 84988



84992 Oval Pendant Mounting with Articulated Bail

Accent Stones (ct tw)	1/4	1/4	1/4	1/4	1/4	1/4	1/3
Center Stone (mm)	5x3	5.5x3.5	5.8x3.8	6x4	7x5	7.5x5.5	
Accent Stones (mm)	1- 1.5, 1- 1.4, 1- 1.3 1- 1.2, 1- 1.1, 34- 1.0	1- 1.5, 1- 1.4, 1- 1.3 1- 1.2, 1- 1.1, 37- 1.0	1- 1.5, 1- 1.4, 1- 1.3 1- 1.2, 1- 1.1, 39- 1.0	1- 1.5, 1- 1.4, 1- 1.3 1- 1.2, 1- 1.1, 40- 1.0	1- 1.5, 1- 1.4, 1- 1.3 1- 1.2, 1- 1.1, 46- 1.0	1- 1.5, 1- 1.4, 1- 1.3 1- 1.2, 1- 1.1, 48- 1.0	
Dimensions	10x6.5	10.9x7.3	10.8x7.5	11x8	12.5x8	12.7x9	
bail ID	3x1.75	3x1.75	3x1.75	3.25x1.5	3x1.5	3x1.75	
dwt	0.54	0.57	0.57	0.59	0.67	0.73	
14kt \$	\$209	\$219	\$219	\$225	\$245	\$259	



84988 Graduated Cluster Pendant for Oval Center

Accent Stones (ct tw)	1/6	1/4	1/3	3/8	3/4
Center Stone (mm)	6x4	7x5	8x6	9x7	12x10
Accent Stones (mm)	1- 1.8, 2- 1.6, 2- 1.5 2- 1.4, 2- 1.3, 2- 1.2 2- 1.10	1- 2.2, 2- 2.0, 2- 1.8 2- 1.6, 2- 1.4, 2- 1.3 2- 1.1, 1- 1.10	1- 2.4, 2- 2.1, 2- 1.9 2- 1.7, 2- 1.5, 2- 1.4 2- 1.3, 2- 1.1, 1- 1.0	1- 2.7, 2- 2.4, 2- 2.1 2- 1.9, 2- 1.7, 2- 1.5 2- 1.3, 2- 1.1, 1- 1.0	1- 3.6, 2- 3.1, 2- 2.7 2- 2.4, 2- 2.21, 2- 1.8 2- 1.6, 2- 1.4, 2- 1.2, 1- 1.0
Dimensions	8.5x6.8	9.90x8.30	11.10x9.60	12.10x10.60	16.0x14.30
bail ID	2.6x2.2	2.8x2.4	3.0x2.8	3.5x2.1	3.6x3.1
dwt	0.47	0.57	0.80	0.85	1.64
14kt \$	\$195	\$275	\$289	\$219	\$485



8276 Pendant Mounting for Oval Center

Accent Stones (ct tw)	1/4	1/3	1/3	1/2	5/8	5/8	3/4	1
Center Stone (mm)	8x6	9x7	10x8	12x10	14x12	16x12	18x13	20x15
Accent Stones (mm)	16- 1.5	16- 1.7	16- 1.7	16- 2.0	16- 2.2	20- 2.0	20- 2.2	20- 2.4
bail ID	3.25	2.25	1.25	3.0	3.25	3.0	1.75	2.75
dwt	1.20	1.67	1.58	2.03	2.25	2.75	2.85	3.56
14kt \$	\$345	\$439	\$459	\$549	\$605	\$729	\$755	\$935



597-9 9-Stone Oval Cluster Pendant

Center Stone (mm)	4x2.5	5x3	6x4	7x5	8x6	9x7	10x8	11x9	12x10	14x10	16x12
Accent Stones (mm)	8- 1.7	8- 2.2	8- 2.4	8- 2.4	8- 2.7	8- 2.7	8- 2.7	8- 2.7	8- 2.7	8- 3.0	8- 3.0
Bail ID	2.0	2.5	2.25	2.25	3.5	3.5	3.5	3.5	3.5	3.5	3.5
dwt	0.38	0.53	0.73	0.95	1.07	1.23	1.32	1.37	1.42	1.67	2.18
14kt \$	\$95	\$129	\$175	\$219	\$245	\$279	\$285	\$299	\$309	\$365	\$455



598-9 11-Stone Oval Cluster Pendant

Center Stone (mm)	4.5x2.5	5x3	5.5x3.5	6x4	6.5x4.5	7x5	7.5x5.5	8x6
Accent Stones (mm)	10- 1.5	10- 1.7	10- 2.0	10- 2.0	10- 2.4	10- 2.7	10- 2.7	10- 3.0
Bail ID	2.25x2	2.25x2	2.25x2	2.75x2.3	3.25x2.5	4.25x3.5	4.25x3.5	4.25x3.5
dwt	0.38	0.41	0.59	0.65	0.82	1.03	1.07	1.30
14kt \$	\$95	\$105	\$139	\$155	\$189	\$235	\$245	\$285



599-9 13-Stone Cluster Pendant

Center Stone (mm)	6x4	6.5x 4.5	8x6	9x7	10x8
Accent Stones (mm)	12- 1.7	12- 2.0	12- 2.4	12- 2.7	12- 3.2
Bail ID	2.25x2	2.25x2	3.25x2.5	4.25x3.5	4.25x3.5
dwt	0.54	0.57	0.93	1.39	1.83
14kt \$	\$99	\$119	\$159	\$185	\$215



85308

Accent Stones (ct tw)	1/10	1/10
Center Stone (mm)	5x3	6x4
Accent Stones (mm)	20- 1.0	21- 1.0
Bail ID	2.3x1.4	2.3x1.4
dwt	0.61	0.68
14kt \$	\$229	\$245



1081-9 Oval Multi-Stone Cluster Pendant

Center Stone (mm)	5x3	6x4	7x5	8x6	9x7	10x8	12x10	14x10
Accent Stones (mm)	8- 1.3	12- 1.3	12- 1.5	12- 1.7	16- 1.7	16- 1.7	16- 2.0	20- 2.0
Bail ID	3.25x2	2.75x2.55	3x2.25	2.75x2.25	2.5x2.25	3x2.5	2.75x2.25	3x2.5
dwt	0.40	0.50	0.67	0.80	0.92	1.00	1.33	1.60
14kt \$	\$229	\$289	\$345	\$129	\$135	\$215	\$305	\$385

Most items available in any metal quality.

Suggested retail prices based on \$1,600 gold, \$1,700 platinum, and \$30 silver. Visit stuller.com for our complete product selections and current pricing. | 731

PENDANTS



Neckwear | Oval



82420 14kt
1- 5x3, 0.03 ct tw
(1- 1.2, 5- 1.0)
17.25x9, bail ID 3x1.75
\$419, 1.38 dwt



8410 14kt
1- 5x3, 0.04 ct tw
(1- 1.3, 4- 1.0)
15x8, bail ID 1.0
\$265, 0.77 dwt
matching earrings #8411



22146 14kt
1- 5x3
14.5x3
bail ID 1.5x2.25
\$165, 0.34 dwt



22144 14kt
1- 5x3
10.5x5
bail ID 1.5x2.75
\$165, 0.36 dwt



22148 14kt
1- 5x3
21x2.75
bail ID 1.5x2.25
\$239, 0.66 dwt



22142 14kt
1- 5x3
19.5x5
bail ID 2.5x1.75
\$225, 0.60 dwt



22373 14kt
1- 6x4, 1/8 ct tw (12- 1.3)
28.75x3.75
bail ID 2.0
\$465, 1.55 dwt



22148 14kt
1- 6x4
22.25x4
bail ID 1.75x2.75
\$279, 0.81 dwt



22146 14kt
1- 6x4
15.5x4
bail ID 1.5x2.75
\$215, 0.55 dwt



22142 14kt
1- 6x4
20.25x6
bail ID 1.75x2.75
\$279, 0.82 dwt



22144 14kt
1- 6x4
13.5x6
bail ID 3x1.75
\$205, 0.52 dwt



83040 14kt
1- 5x3, 1- 6x4 1/10 ct tw
(8- 1.25, 1- 1.0)
23.75x10, bail ID 5x2.25
\$505, 1.71 dwt



80770 14kt
1- 6x4, 0.025 ct tw (2- 1.3)
19.75x10.75, bail ID 1.0
\$269, 0.78 dwt
FJ #62071



82487 14kt
1- 6x4 (4- 1.5)
24.5x14.75, bail ID 1.5x1.5
\$559, 1.95 dwt
matching dangle #82531



81636 14kt
1- 7x5
17.3x9.75
bail ID 1.75
\$439, 1.58 dwt



80291 14kt
1- 7x5
15x11
bail ID 3.0
\$355, 1.12 dwt



22146 14kt
1- 7x5
16.5x5
bail ID 2.25x3
\$249, 0.69 dwt



8819 14kt
1- 7x5, 0.025 ct tw
(1- 1.5), 13.5x6
bail ID 1.5
\$259, 0.73 dwt



80496 14kt
1- 7x5, 1/8 ct tw
(6- 1.7), 18x9.25
bail ID 1.8x3
\$315, 0.96 dwt



81968 14kt
1- 7x5
28.5x16
\$1,015, 3.77 dwt



22144 14kt
1- 7x5
14.5x7
bail ID 3x2
\$245, 0.68 dwt



22148 14kt
1- 7x5
23.25x5
bail ID 3x2.25
\$315, 0.96 dwt



22142 14kt
1- 7x5
21.25x7
bail ID 2.75x2
\$315, 0.96 dwt



22146 14kt
1- 8x6, 17.15x5.5
bail ID 2.5x3.25
\$295, 0.87 dwt



22148 14kt
1- 8x6, 24x5.75
bail ID 2.5x3
\$355, 1.11 dwt



22142 14kt
1- 8x6, 22.25x7.75
bail ID 3x2.25
\$359, 1.14 dwt



22144 14kt
1- 8x6, 16x8
bail ID 3.5x2.75
\$289, 0.86 dwt



81789 14kt
1- 8x6, 20.5x11
bail ID 2.75x6
\$585, 2.03 dwt



85322 14kt
1- 8x6, 0.025 ct tw (1- 1.5)
33.1x12.5
\$475, 1.60 dwt



85320 14kt
1- 8x6, 0.025 ct tw (1- 1.5)
24.3x10.8
\$365, 1.17 dwt



85353 14kt
1- 8x6, 0.025 ct tw (1- 1.5)
29.5x12
\$435, 1.44 dwt



85347 14kt
1- 8x6, 0.025 ct tw (1- 1.5)
27x14.1, bail ID 3x2
\$415, 1.36 dwt



83077 14kt
1- 8x6, ¼ ct tw (56- 1.0)
29x15.5
\$809, 2.94 dwt



85242 sterling silver
1- 8x6, ⅓ ct tw (2- 2.5)
17x5.5
bail ID 6.25x3.75
\$205, 1.84 dwt



85241 sterling silver
1- 8x6
17x5.5
bail ID 6.25x3.75
\$169, 1.16 dwt



80496 14kt
1- 8x6, ⅓ ct tw (6- 1.7)
17.5x10.5
bail ID 1.8x5.25
\$429, 1.41 dwt



82492 14kt
1- 8x6, 0.03 ct tw
(2- 1.3, 1- 1.2, 1- 1.0)
19x9.75, bail ID 5x2
\$455, 1.51 dwt



82551 14kt two-tone
1- 8x6
29.5x6
bail ID 3x2.75
\$395, 1.27 dwt



80499 14kt
1- 8x6, 0.06 ct tw
(2- 1.7, 1- 1.5)
15x6.25, bail ID 1.8x3
\$245, 0.68 dwt



82356 14kt
1- 8x6, 0.03 ct tw
(1- 2.0), 16x10.25
bail ID 2.5x1.5
\$499, 1.82 dwt



80498 14kt
1- 8x6, .025 ct tw
(1- 1.7), 17x5.5
bail ID 2x2.75
\$265, 0.76 dwt



81981 14kt
1- 8x6
17.5x8.25
bail ID 2.5x5.5
\$359, 1.13 dwt



83320 14kt
1- 8x6, 0.04 ct tw
(1- 2.2), 14.5x9.5
bail ID 2.75x2.25
\$519, 1.90 dwt



83182 14kt
1- 9x7, 0.01 ct tw
(1- 1.3), 18.5x6.5
bail ID 2x2.75
\$429, 1.42 dwt



80496 14kt
1- 9x7, ⅓ ct tw
(6- 1.7), 21x11
bail ID 1.8x4
\$445, 1.49 dwt

Most items available in any metal quality.

Suggested retail prices based on \$1,600 gold, \$1,700 platinum, and \$30 silver. Visit stuller.com for our complete product selections and current pricing. | 733

PENDANTS



OVAL



83343 14kt
1- 9x7, ¼ ct tw (30- 1.2)
18x13.75, bail ID 2.75x2
\$635, 2.37 dwt



82100 sterling silver
1- 9x7
18.25x15.25
\$159, 1.29 dwt



8990 14kt
1- 9x7, 0.04 ct tw (4- 1.3)
21x11, bail ID 2.0
\$409, 1.34 dwt



85245 sterling silver
1- 9x7, 24.5x11.2
bail ID 7.5x2.75
\$195, 0.92 dwt



84106 14kt
1- 10x8 cab
0.03 ct tw (5- 1.0)
14.25x9.75, bail ID 4x2.5
\$289, 0.86 dwt



83178 14kt
1- 10x8, 15.5x13.75
bail ID 6.5x3.25
\$979, 3.63 dwt



83179 14kt
1- 10x8, 14.5x12.75
bail ID 5.5x2.75
\$935, 3.44 dwt



81778 14kt
1- 10x8, 18.25x10.75
bail ID 3.0
\$585, 2.05 dwt



82968 14kt
1- 10x8, 21x11.75
bail ID 4.25x2.75
\$555, 1.93 dwt



82490 14kt
1- 10x8, 0.07 ct tw
(1- 2.0, 1- 1.8, 1- 1.6)
22.5x8, bail ID 7.5x2.25
\$585, 2.05 dwt



80498 14kt
1- 10x8
0.025 ct (1- 1.7)
18.5x7, bail ID 2x2.75
\$279, 0.82 dwt



80496 14kt
1- 10x8
¼ ct tw (6- 1.7)
23x13, bail ID 2.1x4.75
\$509, 1.74 dwt



8440 14kt
1- 10x8
⅓ ct tw (10- 1.3)
bail ID 1.25
\$579, 2.03 dwt



83343 14kt
1- 10x8
¼ ct tw (32- 1.2)
19x14.75, bail ID 275x2
\$649, 2.43 dwt



83762 14kt
1- 10x8
⅓ ct tw (17- 1.0)
25x14.5, bail ID 4x275
\$715, 2.57 dwt



83763 14kt

1- 10x8, ½ ct tw (4- 2.0, 14- 1.0)
21.5x13.25, bail ID 2.5
\$439, 1.46 dwt



83765 14kt

1- 11x9, 0.06 ct tw (4- 1.5)
21.75x13.5, bail ID 3.5x2
\$555, 1.93 dwt



83657 14kt

1- 11x9, 0.03 ct tw (1- 2.0)
18.75x15.75, bail ID 4x2.25
\$619, 2.19 dwt



83764 14kt

1- 11x9, ¾ ct tw (16- 1.5, 34- 1.0)
23.75x15.25, bail ID 3x2
\$715, 2.57 dwt



83178 14kt

1- 12x10
17.75x15.75
bail ID 8x3
\$1,229, 4.64 dwt



83179 14kt

1- 12x10
17x14.5
bail ID 6.5x3
\$1,145, 4.29 dwt



83644 14kt

1- 12x10, ¼ ct tw (37- 1.2)
23.25x14
bail ID 5x3
\$599, 2.11 dwt



83642 14kt

1- 12x10
¼ ct tw (53- 1.0)
24.25x15, bail ID 4.75
\$825, 3.02 dwt



8659 14kt

1- 14x10
½ ct tw (2- 2.4, 4- 2.0)
26x16, bail ID 3.0
\$665, 2.36 dwt



84444 14kt

1- 14x10
½ ct tw (1- 2.2, 41- 1.3)
27x14, bail ID 6x2.75
\$525, 1.79 dwt

PENDANTS



A. 28393 | B. 28427



23975 4-Prong Vintage Scroll Setting® Pendant



mm Stone Size	10x8	12x10	14x10
Bail ID	5x2.2	6x2.6	7x3.1
dwt	0.76	0.93	1.33
14kt \$	\$175	\$225	\$289



23327 4-Prong Pendant



mm Stone Size	9x7	10x8	12x10	14x10
Bail ID	4.25x1.6	4.75x1.6	6x3	6x3
dwt	0.71	0.93	1.55	1.58
14kt \$	\$165	\$209	\$335	\$339



23972 4-Prong Laurel Scroll Setting® Pendant



mm Stone Size	10x8	12x10	14x10
Bail ID	5x2.2	6x2.4	7.5x2.7
dwt	0.94	1.25	1.57
14kt \$	\$219	\$285	\$339



83313 14kt
1- 10x8, 1- 8x6
21.5x11.5, bail ID 4x2.75
\$795, 2.89 dwt



83332 14kt
1- 9x7, 0.06 ct tw (1- 1.7, 1- 1.5
2- 1.2, 1- 1.0), 19.5x8.75
bail ID 5x2.5
\$509, 1.86 dwt



83180 14kt
1- 10x8, 14.25x12
bail ID 6.5x3
\$785, 2.84 dwt



83504 14kt two-tone
1- 10x8, 3/8 ct tw (44- 1.3)
15x8.25, bail ID 5x3
\$885, 3.26 dwt



83340 14kt
1- 10x8, 1/8 ct tw (6- 1.7)
17.5x14.25, bail ID 4.25x2.75
\$639, 2.38 dwt



84472 14kt
1- 14x10, 1/2 ct tw (1- 2.2, 45- 1.3)
21.56x14.06, bail ID 2.97
\$555, 1.93 dwt

CUSHION



PENDANTS



23341 4-Prong Pendant



mm Stone Size	5x5	6x6	8x8	10x10
Bail ID	2.5x1.5	3.5x1.7	4.75x1.8	6x2.5
dwt	0.28	0.49	0.89	1.41
14kt \$	\$69	\$115	\$205	\$305



23978 4-Prong Vintage Scroll Setting® Pendant



mm Stone Size	8x8	10x10	12x12
Bail ID	4.5x2.3	5.5x2.5	5.5x3.2
dwt	0.58	0.77	1.20
14kt \$	\$139	\$179	\$275



23969 4-Prong Laurel Scroll Setting® Pendant



mm Stone Size	8x8	10x10	12x12
Bail ID	4x2.1	5x2.4	6x3.1
dwt	0.65	0.83	1.42
14kt \$	\$155	\$195	\$309



83034 14kt
1- 8x8, 0.03 ct tw (1- 1.8)
19.5x11.25
\$709, 2.54 dwt



84279 sterling silver/
14kt yellow
1- 8x8, 1/8 ct tw (26- 1.0)
23.25x15, bail ID 23.25x15
\$475, 3.23 dwt



82360 14kt
1- 8x8
17.25x11
\$565, 1.96 dwt



83174 14kt
1- 8x8, 1/4 ct tw (3- 1.7, 3- 1.5
12- 1.3), 32x14.25, bail ID 9x3.25
\$1,229, 4.64 dwt



83150 14kt two-tone
1- 10x10
24.5x16.75, bail ID 3x2.75
\$1,085, 4.05 dwt



84640 14kt
1- 10x10, 3/8 ct tw (1- 2.2, 39- 1.3)
21.5x13.75, bail ID 5.25x2.75
\$505, 1.71 dwt



82485 14kt
1- 10x10, 18.28x12
bail ID 5x2.25
\$779, 2.83 dwt



84296 14kt two-tone
1- 12x12, 0.04 ct tw (1- 2.25)
28.25x18.75, bail ID 5.5x2.75
\$1,475, 5.62 dwt



84356 sterling silver/14kt yellow
1- 12x12, 22x14.5
bail ID 5x2.25
\$639, 5.94 dwt



84494 sterling silver/14kt yellow
1- 12x12, 17x19.87
\$329, 1.22 dwt
FJ #67161

Most items available in any metal quality.

Suggested retail prices based on \$1,600 gold, \$1,700 platinum, and \$30 silver. Visit stuller.com for our complete product selections and current pricing. | 737

PENDANTS



28428 4-Prong Wire Basket Pendant



mm Stone Size	5x3	6x4	7x5	8x6	9x7	10x8	12x10	14x10	16x12
Bail ID	1.75x1.5	2x1.5	2.75x1.6	3x2	3.5x2.2	3.75x2.3	4.75x2.7	4.75x2.7	5.5x2.9
dwt	0.20	0.27	0.38	0.48	0.61	0.72	1.08	1.12	1.83
14kt \$	\$49	\$65	\$95	\$115	\$139	\$165	\$245	\$255	\$325



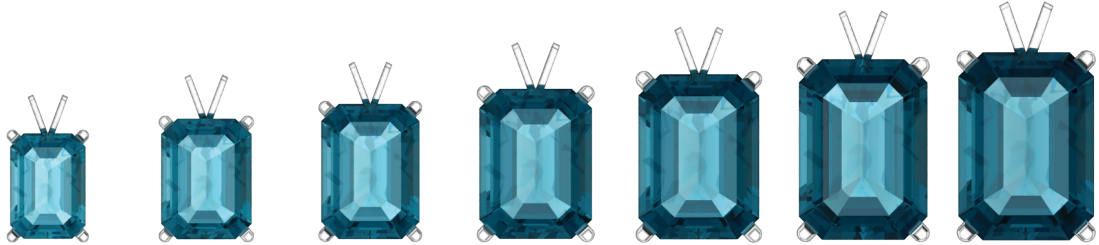
mm Stone Size	18x13	20x15
Bail ID	5.5x2.9	6x3.4
dwt	1.83	2.20
14kt \$	\$405	\$475



1650 4-Prong Wire Basket Pendant



mm Stone Size	5x3	6x4	7x5	8x6	9x7	10x8	12x10
Bail ID	1.3x1.25	1.3x1.25	2.25x1.8	1.3x1.25	3.5x2.2	2.25x1.7	2x1.7
dwt	0.21	0.28	0.40	0.49	0.67	0.73	0.96
14kt \$	\$55	\$69	\$95	\$115	\$155	\$165	\$215



mm Stone Size	14x10	16x12	18x13	20x15	22x16	24x17	25x18
Bail ID	3x2.1	3x2.1	3x2.1	3x2.1	7.5x4.5	7.5x4.5	7.5x4.5
dwt	1.20	1.42	1.84	1.77	2.69	2.96	3.08
14kt \$	\$269	\$305	\$385	\$375	\$559	\$615	\$635



1907 4-Prong Scroll Setting® Pendant



mm Stone Size	5x3	6x4	7x5	8x6	9x7	10x8	11x9	12x10	14x10
Bail ID	2.5x1.6	2.5x1.6	3.5x1.9	3.5x1.9	4.25x2.3	4.25x2.3	4.25x2.3	3.25x2.4	3.25x2.4
dwt	0.23	0.28	0.40	0.43	0.54	0.68	0.80	1.09	1.28
14kt \$	\$65	\$79	\$105	\$115	\$135	\$169	\$195	\$255	\$285



mm Stone Size	14x12	16x12	18x13	20x15	22x16	24x17	25x18
Bail ID	3.25x2.4	3.25x3.4	4.5x3.4	4.5x3.4	4.5x3.4	6x4.4	6x4.4
dwt	1.21	1.48	2.09	2.20	2.31	3.45	3.38
14kt \$	\$285	\$329	\$445	\$465	\$489	\$725	\$709



24891 4-Prong Vintage Scroll Setting® Pendant



mm Stone Size	10x8	11x9	12x10	14x10	14x12	16x12	18x13
Bail ID	4.25x2.1	4.75x2.4	5.5x2.7	5.5x2.7	6.5x3.1	6.5x3.1	7x3.4
dwt	0.60	0.71	0.87	0.97	1.18	1.19	1.53
14kt \$	\$145	\$169	\$205	\$225	\$269	\$275	\$335



mm Stone Size	20x15	22x16	24x17	25x18
Bail ID	7.5x3.7	7.8x4	8.5x4.1	8.5x4.1
dwt	1.95	2.35	2.59	2.68
14kt \$	\$409	\$495	\$539	\$559



24881 4-Prong Laurel Scroll Setting® Pendant



mm Stone Size	10x8	11x9	12x10	14x10	14x12	16x12	18x13
Bail ID	4.5x2.1	5x2.4	5.5x2.7	5.5x2.7	6.5x3.1	6.5x3.1	7x3.4
dwt	0.67	0.82	0.97	1.16	1.33	1.46	1.95
14kt \$	\$159	\$185	\$225	\$265	\$289	\$315	\$405



mm Stone Size	20x15	22x16	24x17	25x18
Bail ID	7.5x3.9	8x4.1	8.5x4.2	9x4.3
dwt	2.43	2.89	3.21	3.53
14kt \$	\$505	\$605	\$665	\$729



22156 14kt
1- 5x3, 10.5x4.75
bail ID 2.25x1.5
\$165, 0.36 dwt



22156 14kt
1- 6x4, 13.5x6
bail ID 2.75x1.75
\$215, 0.55 dwt



22154 14kt
1- 6x4, 20.5x6
bail ID 2.75x1.75
\$299, 0.90 dwt



22160 14kt
1- 6x4, 15.5x4
bail ID 2.75x1.75
\$215, 0.56 dwt



22156 14kt
1- 7x5, 15x7
bail ID 2.75x2.25
\$255, 0.71 dwt



8278 14kt
3/4 ct tw (1- 7x5, 14- 2.0)
18x11, bail ID 2.0
\$415, 1.37 dwt

Most items available in any metal quality.

Suggested retail prices based on \$1,600 gold, \$1,700 platinum, and \$30 silver. Visit stuller.com for our complete product selections and current pricing. | 739

PENDANTS



83316 14kt
1- 7x5, 0.07 ct tw
(1- 2.0, 1- 1.7, 1- 1.5)
13x8.25
bail ID 4.75x2
\$339, 1.06 dwt



81947 14kt
1- 7x5
14x6
bail ID 2.27
\$385, 1.24 dwt



22160 14kt
1- 7x5
16.75x5
bail ID 3x2.25
\$255, 0.71 dwt



22154 14kt
1- 7x5
21.25x7
bail ID 2.75x2.25
\$315, 0.96 dwt



8278 14kt
1- 7x5, 1/4 ct tw
(14- 2.0), 18x11
bail ID 2.0
\$415, 1.37 dwt



81947 14kt
1- 8x6
16.75x7
bail ID 5.5x2.5
\$519, 1.78 dwt



83231 14kt
1- 8x6, 1/4 ct tw
(1- 4x2), 15.5x9.25
bail ID 3x2.25
\$645, 2.29 dwt



81353 14kt
1- 8x6, 0.08 ct tw
(2- 1.7, 1- 1.5), 17.5x6
bail ID 1.9x3.5
\$265, 0.75 dwt



22160 14kt
1- 8x6, 18.25x6
bail ID 3.25x2.5
\$305, 0.92 dwt



82494 14kt
1- 8x6
36.5x5.75
bail ID 3.75x1.5
\$595, 2.08 dwt



83643 14kt
1- 9x7
1/2 ct tw (67- 1.0)
26.25x15.25
bail ID 4.75x2
\$605, 2.12 dwt



81806 14kt
1- 9x7
16x9
bail ID 1.75x2.5
\$505, 1.71 dwt



81353 14kt
1- 9x7, 0.08 ct tw
(2- 1.7, 1- 1.5)
18.5x7, bail ID 2.0
\$285, 0.84 dwt



81806 14kt
1- 10x8
18x9
bail ID 2.5x4
\$655, 2.32 dwt



82557 14kt
1- 10x8
22x9.75
bail ID 5x2.5
\$1,075, 4.02 dwt



8930 14kt
1- 10x8, 1/2 ct tw
(1- 3x1.75, 2- 2.0, 2- 1.5)
21x9, bail ID 2.5
\$355, 1.11 dwt
matching earrings #80602



83322 14kt
1- 10x8
0.05 ct tw (5- 1.3)
17.5x8, bail ID 6x2.5
\$605, 2.13 dwt



81796 14kt
1- 10x8
17.5x7.75
bail ID 1.75x4.5
\$379, 1.22 dwt



81353 14kt
1- 10x8, 0.08 ct tw
(2- 1.75, 1- 1.5)
19x7.5
bail ID 2x3.5
\$305, 0.93 dwt



83177 14kt
1- 10x8
15.25x13.25
bail ID 6x2.5
\$1,069, 3.99 dwt



83177 14kt
1- 12x10
17x15
bail ID 7x2.25
\$1,355, 5.14 dwt



83645 14kt
1- 12x10
1/4 ct tw (52-1.0)
26x17.25, bail ID 5x3
\$1,049, 3.92 dwt



1442 4-Prong Pendant



mm Stone Size	3	3.5	4	4.5	5	5.5	6	6.5	7	7.5
Bail ID	1.5	1.25	1.5	1.5	1.5	2.0	1.5	2.0	1.5	2.25
dwt	0.14	0.18	0.17	0.23	0.25	0.27	0.26	0.32	0.36	0.43
14kt \$	\$39	\$49	\$45	\$59	\$65	\$65	\$65	\$79	\$85	\$105



mm Stone Size	8	8.5	9	10	12
Bail ID	2.0	2.5	2.75	2.5	3.5
dwt	0.35	0.45	0.49	0.55	0.68
14kt \$	\$85	\$105	\$115	\$129	\$155



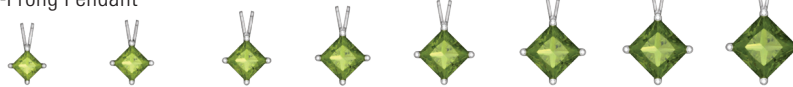
23893 4-Prong Lightweight Pendant



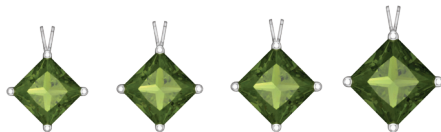
mm Stone Size	4.5	5	5.5	6	6.5	7	7.5	8	8.5	9	9.5	10
Bail ID	2.75x1.6	2.75x1.6	3x1.6	3x1.9	3.25x2	3.5x2.3	3.75x2.3	3.75x2.5	4x2.6	4.5x2.6	4.5x2.8	4.5x2.9
dwt	0.38	0.45	0.39	0.5	0.47	0.68	0.65	0.78	0.83	1.08	1.13	1.25
14kt \$	\$89	\$105	\$95	\$115	\$109	\$155	\$149	\$179	\$189	\$245	\$255	\$279



1889 4-Prong Pendant



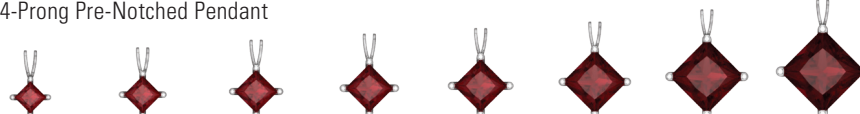
mm Stone Size	3	3.5	4	4.5	5	5.5	6	6.5
Bail ID	1.5x1.3	2x1.4	2.5x1.5	3x1.6	3.25x2.2	3.5x2.3	3.75x2.3	4.25x2.9
dwt	0.19	0.25	0.30	0.33	0.45	0.68	0.52	0.60
14kt \$	\$49	\$65	\$75	\$79	\$95	\$105	\$125	\$139



mm Stone Size	7	7.5	8	9
Bail ID	4.25x2.8	4.75x3	5x3.2	5.75x3
dwt	0.66	0.72	0.82	1.01
14kt \$	\$155	\$165	\$189	\$229



23995 4-Prong Pre-Notched Pendant



mm Stone Size	3	3.5	4	4.5	5	6	7	8
Bail ID	1.5x1.2	1.75x1.5	2.25x1.6	2.5x1.8	3.5x1.9	4.5x2.1	5x2.4	6x2.6
dwt	0.20	0.21	0.31	0.31	0.35	0.49	0.66	0.79
14kt \$	\$49	\$55	\$75	\$75	\$85	\$115	\$149	\$179

Most items available in any metal quality.

Suggested retail prices based on \$1,600 gold, \$1,700 platinum, and \$30 silver. Visit stuller.com for our complete product selections and current pricing. | 741

PENDANTS



1283 4-Prong Scroll Setting® Pendant

mm Stone Size	3x3	3.5x3.5	4x4	4.5x4.5	5x5	5.5x5.5	6x6	6.5x6.5	7x7	7.5x7.5
Bail ID	1.5	1.75	2.0	2.0	2.0	2.5	2.25	2.5	2.5	2.5
dwt	0.24	0.27	0.33	0.32	0.40	0.49	0.52	0.55	0.81	0.86
14kt \$	\$69	\$75	\$89	\$89	\$105	\$125	\$135	\$139	\$195	\$205

mm Stone Size	8x8	8.5x8.5	9x9	9.5x9.5	10x10	11x11	12x12
Bail ID	2.5	2.5	3.5	3.5	3.5	3.5	4.5
dwt	0.99	1.03	1.40	1.53	1.82	2.23	2.89
14kt \$	\$235	\$245	\$309	\$335	\$389	\$475	\$605



24797 4-Prong Scroll Vintage Setting® Pendant

mm Stone Size	8x8	9x9	10x10	12x12	14x14
Bail ID	5.5x2.6	6.5x2.7	7x2.8	7.5x2.8	8x2.8
dwt	0.68	0.81	1.08	1.44	2.15
14kt \$	\$155	\$185	\$249	\$309	\$435

22129 14kt	
½ ct tw (3- 2.5x2.5)	
22.75x2.5	
bail ID 2.75x1.5	
\$135, 0.67 dwt	



24458 4-Prong Scroll Laurel Setting® Pendant

mm Stone Size	8x8	9x9	10x10	12x12	14x14
Bail ID	6x2.7	6.5x2.9	7x3	7.5x3.1	8x3.1
dwt	0.76	0.95	1.22	1.76	2.77
14kt \$	\$185	\$225	\$279	\$375	\$579

22129 14kt	
½ ct tw (3- 3x3)	
24.25x3	
bail ID 2.75x1.5	
\$145, 0.75 dwt	



22233

ct tw	1/5	1/2	3/4
mm Stone Size	1- 2.5x2.5	1- 3.5x3.5	1- 4x4
	1- 2.25x2.25, 1- 2x2	1- 3x3, 1- 2.5x2.5	1- 3.5x3.5, 1- 3x3
Dimensions	22x2.5	25.5x3.5	27x4
Bail ID	2.75x1.5	2.75x1.5	3x1.75
dwt	0.66	0.88	0.93
14kt \$	\$129	\$145	\$169



22136

ct tw	1/5 ct	3/8 ct
mm Stone Size	3- 3x1.5	3- 4x2
Dimensions	24.25x1.5	28.5x2
Bail ID	3x1.75	3x1.75
dwt	0.65	0.85
14kt \$	\$129	\$165



22152 14kt
1- 3x3
10.5x3
bail ID 1.5x2.25
\$159, 0.33 dwt



82495 14kt
1- 4x4
1/6 ct tw (20- 1.2)
\$449, 1.49 dwt



22152 14kt
1- 4x4
13.5x4
bail ID 2.75x1.75
\$205, 0.50 dwt



22150 14kt
1- 4x4
20.25x4
bail ID 1.5x2.75
\$275, 0.80 dwt



22150 14kt
1- 5x5
21.5x5
bail ID 1.5x2.75
\$309, 0.93 dwt



22152 14kt
1- 5x5
14.5x5
bail ID 2.75x2
\$245, 0.67 dwt



81980 14kt
1- 5x5
18x13
bail ID 1.75x2
\$505, 1.85 dwt



81721 14kt
1- 5x5
15.25x11.75
bail ID 1.25x2.75
\$459, 1.54 dwt



81792 14kt
1- 5x5, 1/8 ct tw
(4- 2.0), 16x6.75
bail ID 1.75x6
\$525, 1.93 dwt



82139 14kt
1- 5x5, 1- 4x4
\$459, 1.55 dwt



22152 14kt
1- 6x6
16.25x6
bail ID 2.5x3
\$299, 0.89 dwt



81798 14kt
1- 6x6
14.75x7.75
bail ID 2.1x4
\$429, 1.42 dwt



81684 14kt
1- 6x6
14x10.75
bail ID 1.75x2.75
\$375, 1.21 dwt
FJ# 62066



81777 14kt
1- 6x6, 1/2 ct tw
(4- 1.7, 16- 1.5)
\$769, 2.79 dwt



82417 14kt
1- 7x7, 0.06 ct tw
(4- 1.5), 16.25x8.75
bail ID 2x1.5
\$425, 1.41 dwt



83181 14kt
1- 8x8, 0.08 ct tw
(8- 1.3), 15x9
bail ID 4x2.75
\$539, 1.98 dwt



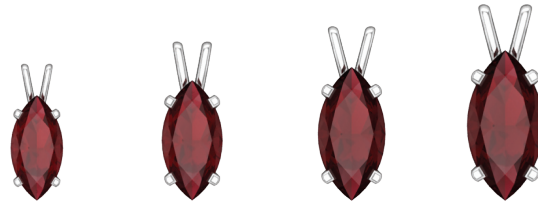
83309 14kt
1- 8x8, 1/2 ct tw
(24- 1.5), 14x14.25
bail ID 3.75x2.25
\$725, 2.61 dwt

PENDANTS



1652 4-Prong Pendant

mm Stone Size	4x2	5x3	6x3	7x4	8x4	9x5	10x5	11x5.5	12x6	13x6
Bail ID	1.1x1.1	1.1x1.1	1.1x1.1	1.5x1.25	1.5x1.25	2x1.9	2x1.9	2x1.9	2x1.9	2.25x3
dwt	0.15	0.21	0.24	0.26	0.38	0.45	0.56	0.50	0.61	0.60
14kt \$	\$39	\$55	\$59	\$65	\$89	\$105	\$129	\$115	\$139	\$155



mm Stone Size	14x7	16x8	18x9	20x10
Bail ID	3.25x2.5	3.8x6	3.8x6	3.8x6
dwt	0.67	1.25	1.35	1.48
14kt \$	\$155	\$279	\$305	\$319



1909 6-Prong Scroll Setting® Pendant

mm Stone Size	5x3	6x3	7x4	8x4	9x4.5	10x5	12x6	14x7
Bail ID	2.5x1.8	2.5x1.8	2.5x1.8	3.25x2.1	3.25x2.1	4.25x2.5	4.25x2.5	4.25x2.5
dwt	0.26	0.28	0.29	0.43	0.52	0.57	0.74	1.11
14kt \$	\$75	\$79	\$85	\$115	\$135	\$145	\$179	\$259



604-9 11-Stone Cluster Pendant

mm Stone Size	6x3	7x3.5	8x4
Accent Stones	10- 1.7	10- 2.0	10- 2.4
Bail ID	2.5x2.1	2.5x2.1	4.5x3.4
dwt	0.59	0.72	0.91
14kt \$	\$139	\$169	\$209



80507 14kt
6- 4x2, 1/10 ct tw
(1- 1.7, 4- 1.5, 2- 1.3)
19.75x7.75, bail ID 2.8x4
\$325, 0.99 dwt



80147 14kt
3- 4x2
0.05 ct tw (3- 1.5)
15x9, bail ID 1.7
\$259, 0.86 dwt



8987 14kt
1- 5x2.5, 2- 4x2
0.04 ct tw (4-1.3)
23x11, bail ID 2.5
\$355, 1.11 dwt



8786 14kt
1- 5x3
0.03 ct tw (3- 1.25)
15x7, bail ID 1.5
\$249, 0.69 dwt



81526 14kt
1- 5x4, 3- 5x2.5
27.5x11.5
bail ID 1.9x3.75
\$179, 0.54 dwt



8784 14kt
3- 4.25x2.25
0.03 ct tw (4- 1.3)
18x14, bail ID 2.25
\$315, 1.07 dwt



81530 14kt
3- 6x3
24x12
bail ID 2.1x3.75
\$195, 0.49 dwt



83062 14kt
3- 6x3
45x7.75
bail ID 1.75x1.5
\$749, 2.70 dwt



83508 14kt
1- 6x3
0.06 ct tw (12- 1.0)
23x11.5
bail ID 5x3.25
\$469, 1.58 dwt



83172 14kt
1- 8x4, 1/8 ct tw (4- 1.5)
4- 1.3 5- 1.2, 3- 1.0
30.75x12.25
bail ID 5.5x2.75
\$815, 2.97 dwt



83171 14kt
1- 8x4
31.75x12.75
bail ID 5x2.75
\$1,045, 3.89 dwt



81377 14kt
6- 5x2.5
.025 ct tw (2- 1.2)
26.5x18, bail ID 2x3.5
\$395, 1.40 dwt



8808 14kt
1- 8x4, 0.05 ct tw
(3- 1.4, 1- 1.2)
22x8, bail ID 2.5
\$335, 1.04 dwt



81804 14kt
1- 8x4
14.75x6.5
bail ID 2x2
\$305, 0.91 dwt



80508 14kt
1- 10x5
0.06 ct tw (3- 1.5, 1- 1.3)
20x9.5, bail ID 2.3x3.5
\$245, 0.79 dwt



8687 14kt
1- 10x5
1/8 ct tw (7- 2.0), 25x10
bail ID 3.5
\$505, 1.85 dwt



81804 14kt
1- 10x5
17.25x7.75
bail ID 1.9x3.25
\$429, 1.41 dwt



8658 14kt
1- 10x5, 1/8 ct tw
(2- 2.0, 2- 1.7, 1- 1.3)
21x9, bail ID 2.5
\$349, 1.22 dwt



8774 14kt
1- 12x6
0.05 ct tw (3- 1.5)
22x9, bail ID 3.0
\$345, 1.09 dwt



80506 14kt
1- 14x7, 0.04 ct tw
(1- 2.2), 25.25x8.75
bail ID 3.4x5
\$419, 1.50 dwt



28463 4-Prong Wire Basket Pendant



mm Stone Size	5x3	6x4	7x5	8x5	9x6	10x7	12x8	14x9	15x10
Bail ID	2x1.5	3x1.8	3.25x2	3.25x2	3.75x2.2	4.75x2.4	5x2.6	5x2.6	5.5x3
dwt	0.13	0.19	0.27	0.30	0.37	0.46	0.61	0.78	0.88
14kt \$	\$35	\$49	\$65	\$75	\$89	\$109	\$145	\$175	\$199



331 4-Prong Wire Basket Pendant



mm Stone Size	5x3	6x4	7x5	8x5	9x6	10x7	12x8	13x9	14x9	15x10
Bail ID	1.1	1.4	2.25x1.8	2.25x1.8	2x1.8	1.75x1.6	1.75x1.6	3x2.2	3x2.2	3x2.2
dwt	0.20	0.27	0.38	0.40	0.53	0.60	0.67	0.99	0.99	1.10
14kt \$	\$49	\$65	\$89	\$95	\$125	\$139	\$155	\$225	\$225	\$249



mm Stone Size	16x12	17x13	18x13	20x12
Bail ID	2.75x2.2	2.75x2.2	2.75x2.2	2.75x2.6
dwt	1.21	1.23	1.32	1.80
14kt \$	\$269	\$275	\$295	\$375



1905 3-Prong Scroll Setting® Pendant



mm Stone Size	5x3	6x4	7x5	8x5	9x6	10x7	12x8	14x9	15x10
Bail ID	1.75	1.75	2.0	2.0	2.0	2.5	2.5	2.5	2.5
dwt	0.21	0.25	0.32	0.38	0.43	0.69	0.89	1.19	1.33
14kt \$	\$65	\$75	\$89	\$99	\$109	\$169	\$215	\$279	\$295



mm Stone Size	17x13	18x12	20x12
Bail ID	2.5	3.25x3.7	4x2.5
dwt	1.75	1.85	2.16
14kt \$	\$375	\$395	\$455



24928 5-Prong Vintage Scroll Setting® Pendant



mm Stone Size	12x8	14x9	15x10	17x13	18x12	20x12
Bail ID	5.5x2.7	5.5x2.7	6x3.1	6.75x3.3	7x3.4	8x3.8
dwt	0.87	1.05	1.19	1.46	1.56	1.87
14kt \$	\$209	\$245	\$279	\$325	\$345	\$399



24919 5-Prong Laurel Scroll Setting® Pendant



mm Stone Size	12x8	14x9	15x10	17x13	18x10	20x12
Bail ID	5x2.7	5x2.75	6.5x3	6.5x3.3	6.5x3.5	8x3.8
dwt	0.95	1.18	1.33	1.67	1.93	2.34
14kt \$	\$219	\$269	\$295	\$365	\$405	\$489



85307 Halo Style Pendant



mm Stone Size	5x3	6x4	7x5
Accent Stones	3- 1.0, 18- 0.9	3- 1.0, 20- 0.9	23- 1.0
Bail ID	2.3x1.4	2.3x1.4	2.3x1.4
dwt	0.57	0.54	0.65
14kt \$	\$219	\$209	\$245



22019 Bezel Pendant Slide

mm Stone Size	5x3	6x4	7x5	8x5	9x6
Chain Opening	1.25x1.1	1.25x1.1	1.5x1.4	2.25x1.5	2.25x1.6
dwt	0.75	0.86	1.13	1.28	1.48
14kt \$	\$169	\$195	\$255	\$289	\$315



22017 Bezel Pendant Slide

mm Stone Size	5x3	6x4	7x5	8x5	9x6
Chain Opening	1.5x1.25	1x1.1	1.4x1.25	2x1.5	2x1.7
dwt	0.34	0.44	0.74	0.82	0.95
14kt \$	\$79	\$105	\$169	\$185	\$215



601-9 11-Stone Cluster Pendant

mm Stone Size	5x3	6x4	7x5	8x5	9x6
Accent Stones	10- 1.5	10- 2.0	10- 2.2	10- 2.4	10- 3.2
Bail ID	2.25x2.1	2.5x2.1	3.25x2.6	3.25x2.6	4.5x3.4
dwt	0.44	0.60	0.82	0.96	1.56
14kt \$	\$105	\$145	\$189	\$225	\$339



602-9 13-Stone Cluster Pendant

mm Stone Size	6x4	7x5	8x5	9x6
Accent Stones	12- 1.5	12- 1.7	12- 2.0	12- 2.4
Bail ID	2.25x2.2	2.8x2.75	2.8x2.75	4.5x3.3
dwt	0.63	0.80	1.03	1.57
14kt \$	\$149	\$185	\$235	\$339

mm Stone Size	10x7	12x8
Accent Stones	12- 2.4	12- 2.4
Bail ID	4.25x3.6	4.25x3.6
dwt	1.45	1.68
14kt \$	\$315	\$365

Most items available in any metal quality.

Suggested retail prices based on \$1,600 gold, \$1,700 platinum and \$30 silver. Visit stuller.com for our complete product selections and current pricing. | 747

PENDANTS



PEAR



80769 14kt
1- 5x3
0.01 ct tw (1- 1.3)
18x8.5, bail ID 1.0
\$249, 0.69 dwt



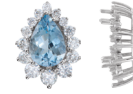
81651 14kt
1- 6x4
.025 ct tw (1- 1.7)
11.25x5.25
bail ID 1.5
\$285, 0.84 dwt



80478 14kt
1- 6x4
0.06 ct tw (4- 1.5)
23.25x17.5
bail ID 1.5
\$315, 0.95 dwt



80769 14kt
1- 6x4
0.01 ct tw (1- 1.3)
18.75x8.5, bail ID 1.0
\$235, 0.63 dwt



85229 14kt
1- 7x5, 1/2 ct tw (1- 2.4)
2- 2.2, 2- 1.9, 2- 1.7
2- 1.5, 5- 1.3)
12.2x8, bail ID 3.25x2
\$225, 0.60 dwt



83036 14kt
1- 7x5
1/10 ct tw (1- 3.0)
16x8.5
bail ID 3x1.75
\$479, 1.62 dwt



83093 14kt
1- 7x5, 1- 6x4
1- 5x3, 36.75x8
bail ID 1x1
\$569, 1.99 dwt



80769 14kt
1- 7x5
0.01 ct tw (1- 1.3)
23x10.5
bail ID 1.3x2
\$305, 0.92 dwt



83191 14kt
1- 7x5
1/2 ct tw (10- 1.3, 8- 1.0)
19x10, bail ID 3.5x2
\$525, 1.79 dwt



81539 14kt
1- 7x5
20.5x14.5
bail ID 1.5x1.25
\$625, 2.33 dwt



83363 14kt
1- 8x5
18.75x10.75
bail ID 7.5x2.75
\$485, 1.64 dwt



80769 14kt
1- 8x5
0.01 ct tw (1- 1.3)
24x11.5
bail ID 1.6x2.25
\$355, 1.13 dwt



81352 14kt
1- 8x5, 14x6.5
bail ID 1.5x3.5
\$285, 0.83 dwt



81967 14kt
1- 8x5, 26.25x15
bail ID 2x6
\$965, 3.58 dwt



85229 14kt
1- 8x5, 1/2 ct tw
(1- 2.7, 2- 2.3, 2- 2.0
2- 1.8, 2- 1.5, 5- 1.3)
13.4x9.3
bail ID 3.75x2
\$249, 0.70 dwt



83507 14kt two-tone
1- 8x5
1/2 ct tw (12- 1.5)
23.25x12.75
bail ID 4.5x3.25
\$529, 1.82 dwt



83648 14kt
1- 9x6
1/2 ct tw (34- 1.0)
17.75x9.75
bail ID 2.75x1.75
\$405, 1.31 dwt



80479 14kt
1- 9x6, 1/2 ct tw
(3- 1.7, 3- 1.5)
16.25x11.5
bail ID 2.9x3.75
\$345, 1.07 dwt



85229 14kt
1- 9x6, ½ ct tw
(1- 2.8, 2- 2.5
2- 2.2, 2- 1.9, 2- 1.7
2- 1.5, 2- 1.3)
14x10.9, bail ID 3.5x2
\$295, 0.87 dwt



81867 14kt
1- 9x6
⅓ ct tw (8- 1.5)
\$429, 1.41 dwt



80490 14kt
1- 9x6
0.01 ct tw (1- 1.3)
17.75x9.75
bail ID 2.1x3
\$295, 0.87 dwt



80978 14kt
1- 10x7
0.03 ct tw (1- 2.0)
28.25x9.5
bail ID 1.7x2
\$475, 1.59 dwt



81795 14kt
1- 10x7
15.75x10
bail ID 1.5x2.25
\$355, 1.11 dwt



85229 14kt
1- 10x7, ½ ct tw
(1- 3.2, 2- 2.8, 2- 2.4
2- 2.0, 2- 1.8, 2- 1.6
5- 1.3), 16x11.8
bail ID 4x2
\$365, 1.15 dwt



8279 14kt
1- 10x7,
⅓ ct tw (11- 2.0)
bail ID 2.0
\$489, 1.67 dwt



83686 14kt
1- 10x7
0.04 ct tw (2- 1.7)
30.25x13.75
bail ID 4.5x2.5
\$555, 1.93 dwt



83646 sterling silver/
14kt yellow, 1- 10x7
⅓ ct tw (21- 1.2, 1- 1.0)
35x15.25, bail ID 4x2
\$195, 1.83 dwt



8989 14kt
1- 10x7
0.05 ct tw (3- 1.5)
19x10, bail ID 2.0
\$359, 1.13 dwt



82969 14kt
1- 10x7
.025 ct tw (1- 1.5)
24x11.25
bail ID 3.5x2.25
\$475, 1.60 dwt



83328 14kt
1- 10x7, 0.09 ct tw
(4- 1.5, 3- 1.3)
25.75x7
bail ID 5.5x2.5
\$535, 1.84 dwt



8279 14kt
1- 11x7.5
¼ ct tw (14- 1.7)
bail ID 1.5
\$379, 1.22 dwt



81381 14kt
1- 12x8
25x12.5
bail ID 2.7x4
\$625, 2.21 dwt



85229 14kt
1- 12x8, ¼ ct tw (1- 3.2
2- 2.9, 2- 2.6, 2- 2.3
2- 2.0, 2- 1.8, 2- 1.7
2- 1.5, 3- 1.3), 18.5x12.9
chain opening, 4x2
\$345, 1.07 dwt



84502 14kt
1- 12x8, ¼ ct tw
(9- 1.3, 35- 1.0), 12x8
bail ID 6x2.75
\$355, 1.12 dwt



8279 14kt
1- 15x10
¼ ct tw (15-2.4)
bail ID 1.5
\$659, 2.34 dwt



8279 14kt
1- 16x11
¼ ct tw (20- 1.7)
bail ID 3.0
\$789, 2.87 dwt

PENDANTS



Neckwear | Heart



1651 4-Prong Wire Basket Pendant

mm Stone Size	4x4	4.5x4.5	5x5	6x5	6x6	6.5x6.5	7x7	7.5x7.5	8x8	8.5x8.5
Bail ID	1.5	1.5	1.5	1.5	2.0	2.0	2.0	2.0	2.5	2.5
dwt	0.25	0.27	0.28	0.30	0.37	0.30	0.41	0.44	0.50	0.57
14kt \$	\$65	\$65	\$69	\$75	\$89	\$75	\$95	\$105	\$115	\$129

mm Stone Size	9x9	10x8	11x9	13x11	14x12	16x15	20x18
Bail ID	2.5	2.5	2.5	3.5	3.5	3.5	3.75
dwt	0.69	0.72	0.84	1.04	1.24	1.51	2.00
14kt \$	\$159	\$165	\$189	\$235	\$279	\$325	\$415



1942 4-Prong Scroll Setting® Pendant

mm Stone Size	4x4	5x5	6x6	7x7	8x8	9x9	10x10	11x11	12x12	15x15	20x20
Bail ID	2.2x1.75	3.5x2	3.5x2	4.25x2.5	4.2x2.25	4x2.25	4x2.5	4.25x2.5	3x2.5	3.25x2.5	4x3.5
dwt	0.25	0.32	0.36	0.49	0.57	0.64	0.78	0.93	1.16	1.70	2.71
14kt \$	\$75	\$89	\$95	\$125	\$145	\$159	\$189	\$225	\$269	\$365	\$569



1266 4-Prong Wire Basket Pendant Setting with Accent

mm Stone Size	4x4	6x6	7x7	8x8
Accent Stones	1- 1.3	1- 1.7	1- 2.0	1- 2.0
Bail ID	2.0	2.0	2.0	2.0
dwt	0.35	0.47	0.57	0.66
14kt \$	\$85	\$109	\$129	\$149



1928 4-Prong Wire Basket Pendant with Accent

mm Stone Size	5x5	6x6	7x7	8x8	10x10	11x11	12x12
Accent Stones	1- 1.7	1- 2.0	1- 2.7	1- 2.7	1- 2.7	1- 3.0	1- 3.0
Bail ID	1.25	3.25x1.5	4.25x1.75	5x2	5x2.25	6x2.25	6.5x2.25
dwt	0.36	0.44	0.55	0.60	0.83	1.00	1.12
14kt \$	\$85	\$105	\$129	\$139	\$189	\$225	\$255



21387 Filigree Bezel Pendant

mm Stone Size	6x6	7x7
Bail ID	4.5	4.75
dwt	0.34	0.52
14kt \$	\$85	\$125



81484 14kt
1- 4x4
12.75x8, bail ID 1.0
\$305, 0.93 dwt



80443 14kt
1- 6x6, 0.01 ct tw (1- 1.3)
16.5x13.75, bail ID 2.9x3.5
\$325, 1.01 dwt



8690 14kt
1- 8x8, 1/8 ct tw (6- 1.7)
27x11, bail ID 3.5
\$419, 1.39 dwt



1651SP 14kt
1- 10x10
bail ID 3.5x2.5
\$139, 0.61 dwt



1879 3-Prong Pendant

mm Stone Size	5x5x5	5.5x5.5x5.5	6x6x6	6.5x6.5x6.5	7x7x7	7.5x7.5x7.5
Bail ID	2.5x1.7	2.25x2.1	2.25x2.1	3x2.4	3.5x2.6	3.5x2.5
dwt	0.30	0.33	0.36	0.40	0.50	0.51
14kt \$	\$75	\$79	\$85	\$95	\$115	\$119



2522SP Twin Prong Pendant

mm Stone Size	4x4x4	4.5x4.5x4.5	5x5x5	6x6x6	7x7x7	8x8x8	9x9x9	10x10x10
bail ID	1.5x1.25	2x1.8	2.25x2	3x2.2	3.5x2.6	4.5x3	3.5x2.6	6x3.8
dwt	0.24	0.28	0.32	0.40	0.48	0.60	0.57	0.78
14kt \$	\$59	\$69	\$75	\$95	\$115	\$139	\$135	\$175



81563 14kt
1- 3x3x3, 19x13
bail ID 1.8x1.8
\$525, 1.80 dwt



81258 14kt two-tone
1- 4x4x4, 0.04 ct tw
(1- 1.8, 1- 1.5), 26x15.5
\$695, 2.49 dwt



22162 14kt
1- 4x4x4, 12.75x4
bail ID 2x2.5
\$199, 0.50 dwt



22162 14kt
1- 4.5x4.5x4.5, 13.75x4.5
bail ID 2.75x2
\$215, 0.56 dwt



81944 14kt
1- 5x5x5
29x18
\$1,025, 3.94 dwt



81060 14kt two-tone
1- 5x5x5
27.25x14.5
\$919, 3.38 dwt



81765 14kt
1- 5x5x5
0.05 ct tw (3- 1.5)
\$339, 1.05 dwt



22162 14kt
1- 5x5x5, 14.5x5
bail ID 2.75x2
\$239, 0.65 dwt



22162 14kt
1- 6x6x6, 16x6
bail ID 3.25x2.5
\$285, 0.83 dwt



81802 14kt
1- 6x6x6
\$165, 0.35 dwt



81848 14kt
1- 6x6x6
1/8 ct tw (4- 2.0)
18.25x8, bail ID 2x2.75
\$445, 1.49 dwt



81632 14kt
1- 6x6x6
15.75x7.75
bail ID 1.25
\$439, 1.46 dwt



81969 14kt
1- 6x6x6
21.25x22.25
\$789, 2.87 dwt



22162 14kt
1- 7x7x7
17.45x7, bail ID 3.5x2.5
\$335, 1.03 dwt



83360 14kt
1- 7x7x7, 0.03 ct tw
(1- 2.0), 16.5x8.75
bail ID 2.75x2.25
\$379, 1.22 dwt



83152 14kt
1- 8x8x8
1/10 ct tw (1- 3.0), 20.5x10.25
bail ID 3.5x2.75
\$529, 1.82 dwt



83321 14kt
1- 9x9x9
22.25x13.25
\$815, 2.96 dwt

Most items available in any metal quality.

Suggested retail prices based on \$1,600 gold, \$1,700 platinum and \$30 silver. Visit stuller.com for our complete product selections and current pricing. | 751

PENDANTS



8661 14kt
1- 10x7
0.06 ct tw (1- 2.5)
22x21, bail ID 3.25
\$695, 2.48 dwt



8662 14kt
1- 12x9, 1/8 ct tw (4- 2.0)
18x15, bail ID 3.0
\$535, 1.84 dwt
matching earrings #8674



80386 14kt
1- 15x12
29.5x17, bail ID 4.25
\$895, 3.42 dwt



80191 14kt
1- 15x10
22x17, bail ID 3.25
\$485, 1.76 dwt



80189 14kt
1- 15x10
0.025 ct tw (1- 1.7)
20x17, bail ID 2.5
\$465, 1.69 dwt



8682 14kt
1- 15x12, 1/8 ct tw (4- 2.4)
28x16, bail ID 3.75
\$735, 2.65 dwt



80373 14kt
1- 20x14
32x15, bail ID 2.75
\$949, 3.63 dwt



8706 14kt
1- 20x14, 0.06 ct tw
(1- 2.0, 1- 1.7, 1- 1.3)
30x16, bail ID 3.0
\$795, 3.01 dwt



80371 14kt
1- 20x14
33x20, bail ID 3.0
\$1,085, 4.19 dwt



A. 80365 | B. 80301



81881 14kt
 $\frac{5}{8}$ ct tw (3- 3.8)
 22.75x10
 \$259, 0.97 dwt



81883 14kt
 1 ct tw (3- 4.4)
 43.5x21.75
 \$1,375, 5.74 dwt



80303 14kt
 0.08 ct tw (4- 1.7)
 38x21
 \$545, 2.18 dwt



80296 14kt
 2- 2.0, 0.08 ct tw
 (1- 1.7), 29x24
 \$279, 1.06 dwt



8897 14kt
 0.05 ct tw
 (1- 1.8, 1- 1.5, 1- 1.3)
 42x18
 \$475, 1.88 dwt



80301 14kt
 $\frac{1}{2}$ ct tw (5- 2.0, 8- 1.8
 12- 1.7), 43x27
 \$805, 3.31 dwt



80308 14kt
 $\frac{9}{10}$ ct tw (1- 3.4, 2- 3.0
 2- 2.9, 2- 2.5, 2- 2.4, 2- 2.0
 4- 1.8, 2- 1.7), 45x23
 \$635, 2.57 dwt



8032 14kt
 0.08 ct tw (4- 1.7)
 21x11
 \$185, 0.65 dwt



8906 14kt
 $\frac{5}{8}$ ct tw (3- 3.0
 4- 2.5, 2- 2.2)
 30x7.5
 \$345, 1.33 dwt



80300 14kt
 $\frac{1}{3}$ ct tw (2- 2.0
 6- 1.7, 8- 1.5)
 35x16
 \$335, 1.29 dwt



8260 14kt
 1 ct tw (20- 2.4)
 28x16
 \$455, 1.81 dwt

Most items available in any metal quality.

Suggested retail prices based on \$1,600 gold, \$1,700 platinum and \$30 silver. Visit stuller.com for our complete product selections and current pricing. | 753

NECK TRIM



80295 14kt
4- 5x2.5
1/10 ct tw
(1- 2.0, 3- 1.7), 40x26
\$555, 2.22 dwt



80363 14kt
1- 5x3
38x19
\$339, 1.18 dwt



80627 14kt
1- 9x6
0.02 ct tw (1- 1.7)
24.5x19.25
\$299, 1.15 dwt



80907 14kt
1- 6x4, 1/2 ct tw (12- 1.5
6- 1.4, 8- 1.2)
52.5x36.5
\$859, 3.39 dwt



8269 14kt
30x14
\$315, 1.22 dwt



8240 14kt
29x20
\$375, 1.46 dwt



80765 14kt
30.75x16.25
\$295, 1.12 dwt



80365 14kt
37x20
\$395, 1.56 dwt



8454 14kt
50x28
\$725, 2.97 dwt



8465 14kt
53x26
\$629, 2.56 dwt



8455 14kt
53x24
\$779, 3.20 dwt



8453 14kt
59x23
\$889, 3.66 dwt



8456 14kt
42x18
\$749, 3.07 dwt



8466 14kt
57x21
\$835, 3.43 dwt

PENDANT ENHANCERS AND CHAIN SLIDES



80088 14kt
 ¼ ct tw (3- 2.0, 2- 1.8
 2- 1.7, 2- 1.5, 6- 1.3)
 15x13, chain opening 1.0
 \$265, 0.75 dwt



80091 14kt
 ¼ ct tw (1- 2.0, 6- 1.7)
 15x10
 chain opening 1.25
 \$239, 0.66 dwt



81966 14kt
 ¼ ct tw (6- 1.7)
 21x12.75
 chain opening 1.25
 \$395, 1.27 dwt



8402 14kt
 ½ ct tw (1- 2.2, 2- 2.0
 2- 1.7), 27x14
 chain opening 2.0
 \$535, 1.85 dwt



8403 14kt
 ¼ ct tw (4- 2.0)
 23x14
 chain opening 2.75
 \$415, 1.36 dwt



80930 14kt
 22.75x17
 bail ID 5.5x2.25
 \$719, 2.58 dwt



80920 14kt two-tone
 26.25x17.5
 bail ID 1.2x3
 \$865, 3.15 dwt



80909 14kt two-tone
 19.25x15.75
 bail ID 1.6x2
 \$545, 1.87 dwt



80939 14kt two-tone
 23.25x16.25
 bail ID 2.1x2.75
 \$875, 2.94 dwt



8397 14kt
 24x14
 bail ID 1.0
 \$395, 1.40 dwt



8398 14kt
 27x14
 bail ID 2.5
 \$455, 1.53 dwt



80923 14kt
 25.25x17
 bail ID 2x2.75
 \$619, 2.17 dwt



80927 14kt
 25x20
 bail ID 1.4x3
 \$999, 3.71 dwt



81324 14kt
 25x16.5
 bail ID 1.4x2.75
 \$675, 2.39 dwt



80910 14kt
 19.5x18.25
 bail ID 2x2
 \$605, 2.12 dwt



8395 14kt
 34x23
 bail ID 2.5
 \$1,055, 3.94 dwt



8446 14kt
 33x51
 \$1,465, 5.58 dwt



81188 14kt
 36.5x48.75
 \$2,605, 10.27 dwt

Most items available in any metal quality.

Suggested retail prices based on \$1,600 gold, \$1,700 platinum and \$30 silver. Visit stuller.com for our complete product selections and current pricing. | 755

PENDANTS



8154 14kt
16x11
bail ID 1.5
\$245, 0.67 dwt



8052 14kt
18x12
bail ID 2.0
\$305, 0.91 dwt



80744 14kt
24.5x17.5
bail ID 2.1x4.75
\$655, 2.43 dwt



8449 14kt
26x22
bail ID 2.5
\$965, 3.57 dwt



8557 14kt
17x16
bail ID 1.5
\$475, 1.61 dwt



80702 14kt
14.25x19.5
bail ID 1.3x1.75
\$475, 1.60 dwt



83000 14kt
16.75x16.5
cow hitch assembly
\$439, 1.57 dwt



82988 14kt
21.75x22.5
cow hitch assembly
\$809, 2.95 dwt



82985 14kt
32.5x15.25
cow hitch assembly
\$559, 1.94 dwt



83001 14kt
19.5x16.75
bail ID 2.0
\$459, 1.54 dwt



82986 14kt
18.25x19.75
bail ID 1.25x1.25
\$819, 2.98 dwt



82989 14kt
23.5x19
bail ID 1.5x1.5
\$829, 3.03 dwt



83069 14kt
60.75x16.5
bail ID 2x1.5
\$1,375, 5.22 dwt



8250 18kt
18.5x12
bail ID 1.75
\$369, 1.13 dwt



83070 14kt
25x15.5
bail ID 1.25x1
\$549, 1.89 dwt



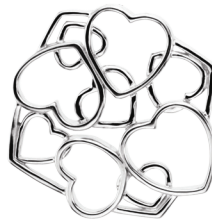
80747 14kt
32.5x12.75
bail ID 1.8x3.75
\$599, 2.09 dwt



84341 14kt
34x34
cow hitch assembly
\$1,199, 4.99 dwt



84345 14kt
27.75x24.25
bail ID 3.25x1.75
\$769, 2.91 dwt



84350 14kt
30.75x3
cow hitch assembly
\$1,229, 4.64 dwt



80713 14kt
20x13.5
bail ID 1.8x3
\$309, 0.95 dwt



83006 sterling silver
24.5x12
cow hitch assembly
\$95, 1.27 dwt

PENDANTS



8106 14kt
20x15
bail ID 2.25
\$445, 1.61 dwt



8244 14kt
24.5x17
bail ID 2.0
\$719, 2.70 dwt



80762 14kt
20.75x7.75
bail ID 2.75x1
\$225, 0.59 dwt



80649 14kt
25x10.5
bail ID 1.7x2.25
\$485, 1.63 dwt



80752 14kt
30.5x22.75
bail ID 1.6x3.5
\$1,109, 4.26 dwt



80775 14kt
29x14
bail ID 1.8x4.75
\$689, 2.58 dwt



8308 14kt
17x9.5
bail ID 1.25
\$215, 0.67 dwt



80763 14kt
19.5x9.25
bail ID 1.2x1.25
\$259, 0.85 dwt



8559 14kt
26x5
bail ID 2.0
\$279, 0.93 dwt



80718 14kt
26.75x11.25
bail ID 1.6x3.5
\$595, 2.21 dwt



80716 14kt
28x11
bail ID 1.4x3
\$549, 2.02 dwt



80648 14kt
28x10
bail ID 2.4x4.75
\$455, 1.63 dwt



80662 14kt
22x12.5
bail ID 1.4x3
\$345, 1.19 dwt



8434 14kt
21x11
bail ID 2.25
\$315, 1.08 dwt



80745 14kt
26x11
bail ID 1.7x3.5
\$629, 2.34 dwt



80726 14kt
39.25x10.75
bail ID 2x3.5
\$789, 2.87 dwt



8249 14kt
22x9
bail ID 2.0
\$349, 1.21 dwt



80741 14kt
24.5x12.25
bail ID 1.9x3.5
\$495, 1.79 dwt

Most items available in any metal quality.

Suggested retail prices based on \$1,600 gold, \$1,700 platinum and \$30 silver. Visit stuller.com for our complete product selections and current pricing. | 757

PENDANTS



8233 14kt
21.5x11.25
bail ID 1.5
\$259, 0.74 dwt



80661 14kt
31.5x14.75
bail ID 2.2x5.5
\$405, 1.43 dwt



80666 14kt
32.5x12
bail ID 1.3x3.25
\$529, 1.81 dwt



80746 14kt
26.5x12.25
bail ID 1.7x4.5
\$599, 2.10 dwt



80711 14kt
31.25x9.5
bail ID 1.6x5
\$535, 1.85 dwt



8202 14kt
25x8.5
bail ID 2.5x1.5
\$345, 1.08 dwt



80753 14kt
29.5x10.25
bail ID 1.3x3.25
\$639, 2.26 dwt



80646 14kt
27x12
bail ID 2.3x3.5
\$435, 1.55 dwt



80727 14kt
25x8.25
bail ID 2.2x3.75
\$369, 1.30 dwt



8300 14kt
30x14
bail ID 1.5x1
\$479, 1.74 dwt



8206 14kt
28x14
bail ID 2.5x1.75
\$345, 1.20 dwt



80734 14kt
18.75x11.5
bail ID 1.7x2.25
\$449, 1.49 dwt



80715 14kt
30.25x16
bail ID 2.2x4
\$549, 1.90 dwt



80672 14kt
26.5x13.25
bail ID 1.4x2.75
\$419, 1.38 dwt



80717 14kt
25.5x9.25
bail ID 1.4x3
\$485, 1.76 dwt



80731 14kt
23.75x10
bail ID 1.3x2.5
\$395, 1.39 dwt



80730 14kt
29.5x13
bail ID 2x3.25
\$459, 1.66 dwt



80732 14kt
22.75x16.25
bail ID 2x3.25
\$589, 2.17 dwt



80647 14kt
25.5x12
bail ID 1.9x3.25
\$485, 1.63 dwt



80650 14kt
24.25x10.5
bail ID 2.4x3.75
\$485, 1.77 dwt



8182 14kt
19x6, bail ID 1.5
\$195, 0.59 dwt



8180 14kt
20x9
bail ID 1.75
\$255, 0.85 dwt



8181 14kt
25x9, bail ID 2.5
\$425, 1.53 dwt



8143 14kt
30x10, bail ID 3.0
\$625, 2.31 dwt



8013 14kt
22x13, bail ID 2.0
\$485, 1.75 dwt



8012 14kt
23x11, bail ID 1.45
\$409, 1.45 dwt



8115 14kt
28x16, bail ID 3.5
\$645, 2.41 dwt



8144 14kt
28x19, bail ID 2.7
\$729, 2.74 dwt



8132 14kt
31x17, bail ID 4.0
\$849, 3.23 dwt



8007 14kt
29x16
bail ID 2x3
\$795, 3.00 dwt



8004 14kt
31x18
bail ID 1.9x3
\$635, 2.37 dwt



8005 14kt
33x19
bail ID 1.9x3
\$1,195, 4.6 dwt



8001 14kt
40x22
bail ID 5.5x2.75
\$1,885, 7.39 dwt



8000 14kt
50x32
bail ID 2.2x3
\$2,989, 9.48 dwt

Most items available in any metal quality.

Suggested retail prices based on \$1,600 gold, \$1,700 platinum and \$30 silver. Visit stuller.com for our complete product selections and current pricing. | 759